

- GENERAL NOTES:**
1. THE CONTRACTOR OR SUBCONTRACTOR SHALL NOTIFY MEMBERS OF USA TWO WORKING DAYS PRIOR TO PERFORMING EXCAVATION WORK BY CALLING (1-800-642-2444).
  2. THE CONTRACTOR SHALL VERIFY TO HIS SATISFACTION THE TYPES LOCATIONS SIZES AND/OR DEPTHS OF EXISTING UTILITIES WITHIN THE WORK AREA. A REASONABLE EFFORT HAS BEEN MADE TO LOCATE AND DELINEATE THE EXISTING UTILITIES BASED ON AVAILABLE RECORDS. HOWEVER, THE ENGINEER ASSUMES NO RESPONSIBILITY FOR COMPLETENESS OR ACCURACY OF SUCH DELINEATION OF UTILITIES NOR FOR THE EXISTENCE OF ADDITIONAL BURIED OBJECTS OR UTILITIES NOT SHOWN ON THESE DRAWINGS WHICH MAY BE ENCOUNTERED. ANY DISCREPANCIES BETWEEN THE PLANS AND ACTUAL EXISTING CONDITIONS DISCOVERED BY THE CONTRACTOR SHOULD BE REPORTED TO THE ENGINEER.
  3. TO BE SUPPLEMENTED WITH STANDARD PLANS AND SPECIFICATIONS DATED 2023 OF THE CALIFORNIA DEPARTMENT OF TRANSPORTATION, HEREINAFTER REFERRED TO AS STANDARD PLANS, OR STANDARD SPECIFICATIONS.
  4. THE CONTRACTOR SHALL POSSES A CLASS "A" LICENSE OR A COMBINATION OF CLASSES REQUIRED BY THE CATEGORIES AND TYPE OF WORK INCLUDED IN THIS CONTRACT AT THE TIME THAT THE CONTRACT IS AWARDED.
  5. ANY DISCREPANCY DISCOVERED BY CONTRACTOR IN THESE PLANS OR ANY FIELD CONDITIONS DISCOVERED BY CONTRACTOR THAT MAY DELAY OR OBSTRUCT THE PROPER COMPLETION OF THE WORK PER THESE PLANS SHALL BE BROUGHT TO THE ATTENTION OF THE COUNTY D.P.W. AND OWNER IMMEDIATELY UPON DISCOVERY. SAID NOTIFICATION SHALL BE IN WRITING.



COUNTY OF LAKE  
DEPARTMENT OF PUBLIC WORKS

NICE-LUCERNE CUT-OFF  
ASPHALT REHABILITATION PROJECT  
LAKEPORT, CALIFORNIA 95453  
JANUARY 16, 2024

BID NO. 24-16

DISTRICT	COUNTY	ROUTE	POST MILES TOTAL PROJECT	Rev. #	Comments	Date By
01	LAKE	29	0.81			
SCOTT DeLEON RCE 46574 REGISTERED CIVIL ENGINEER						
PLANS APPROVAL DATE _____						
NOTICE: THE COUNTY OF LAKE OR ITS EMPLOYEES OR AGENTS SHALL NOT BE RESPONSIBLE FOR THE ACCURACY OR COMPLETENESS OF PRINTED COPIES OF THESE CONSTRUCTION DOCUMENTS.						



COUNTY OF LAKE  
PUBLIC WORKS DEPARTMENT  
COURTHOUSE 255 N. FORBES STREET  
LAKEPORT, CALIFORNIA 95453  
WEBSITE: WWW.CO.LAKE.CA.US  
PHONE: (707) 263-2341 FAX: (707) 263-7748

NICE-LUCERNE CUTOFF  
ASPHALT REHABILITATION  
PROJECT  
SR 29 & NICE-LUCERNE CUTOFF  
LAKEPORT, CALIFORNIA 95453

COVER SHEET

APPROVAL AND CERTIFICATION:

I CERTIFY THAT THIS PROJECT WAS DESIGNED BY ME OR UNDER MY DIRECTION IN ACCORDANCE WITH GENERALLY ACCEPTED ENGINEERING PRACTICES.

SCOTT DE LEON RCE NO. 46574  
LAKE COUNTY DIRECTOR OF PUBLIC WORKS

DATE

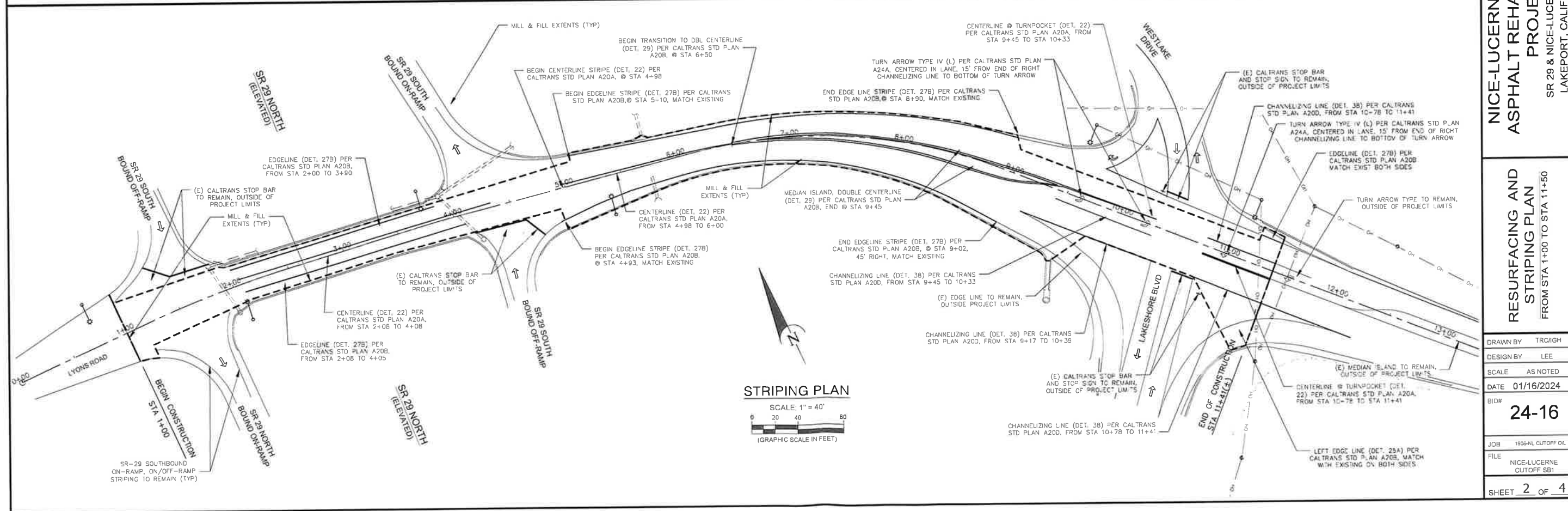
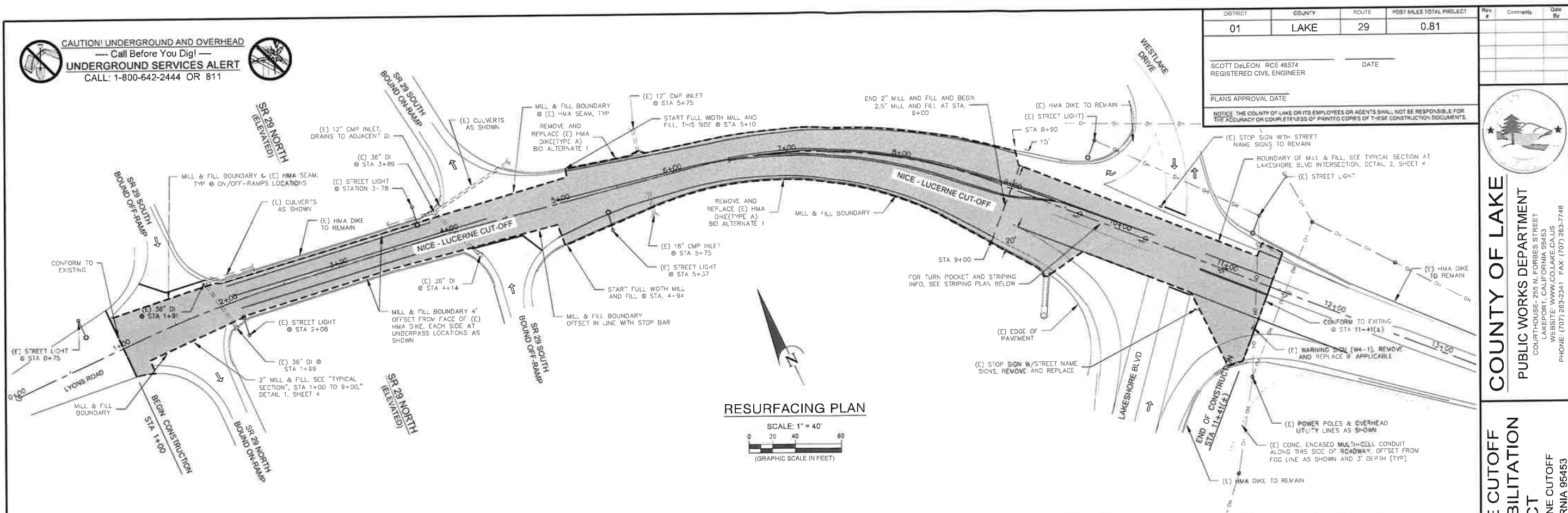
SHEET INDEX

SHT. NO.	SHEET DESCRIPTIONS
1.	COVER SHEET
2.	RESURFACING AND STRIPING PLANS
3.	TRAFFIC CONTROL PLAN AND RELATED NOTES
4.	DETAIL SHEET (TYPICAL CROSS SECTIONS, MISCELLANEOUS DETAILS, ABBREVIATIONS AND LEGEND)

CONTACT INFORMATION

DESCRIPTION	PHONE	EMAIL	MAILING ADDRESS
PROJECT ENGINEER SCOTT DeLEON DIRECTOR OF PUBLIC WORKS	(707) 263-2719	scott.deleon@lakecountycalifornia.gov	255 N. FORBES STREET, RM. 309, LAKEPORT, CA 95453
LAKE COUNTY SPECIAL DISTRICT SCOTT HARTER	(707) 263-0119	scott.harter@lakecountycalifornia.gov	230 NORTH MAIN STREET, LAKEPORT, CA 95453
P.G.&E. DAVE KELLY	(707) 577-7273	dak@pge.com	2510 OLD HIGHWAY 53 CLEARLAKE CA 95422
A.T.&T. MIKE HOLLAND	(707) 995-0650	jh3527@att.com	XXXXXXXXXXXXXXXXXXXX
LAKE COUNTY FIRE PROTECTION DISTRICT	(707) 263-4396	N/A	445 NO. MAIN STREET, LAKEPORT, CA 95453
LAKE COUNTY SHERIFFS DEPARTMENT	(707) 262-2690	N/A	1220 MARTIN STREET, LAKEPORT, CA 95453

DRAWN BY	TRC/IGH
DESIGN BY	LEE
SCALE	AS NOTED
DATE	01/16/2024
BID#	24-16
JOB	1908-NL CUTOFF OL
FILE	NICE-LUCERNE CUTOFF SB1
SHEET	1 OF 4



DISTRICT	COUNTY	ROUTE	POST MILES TOTAL PROJECT	Rev #	Comments	Date By
01	LAKE	29	0.81			
SCOTT DeLEON RCE 46574 REGISTERED CIVIL ENGINEER				DATE		
PLANS APPROVAL DATE						
NOTICE: THE COUNTY OF LAKE OR ITS EMPLOYEES OR AGENTS SHALL NOT BE RESPONSIBLE FOR THE ACCURACY OR COMPLETENESS OF PRINTED COPIES OF THESE CONSTRUCTION DOCUMENTS.						



**COUNTY OF LAKE**

**PUBLIC WORKS DEPARTMENT**

COURTHOUSE, 255 N. FORBES STREET  
LAKEPORT, CALIFORNIA 95453  
WEBSITE: WWW.COLAKE.CA.US  
PHONE (707) 263-2341 FAX (707) 263-7748


**NICE-LUCERNE CUTOFF  
ASPHALT REHABILITATION  
PROJECT**

SR 29 & NICE-LUCERNE CUTOFF  
LAKEPORT, CALIFORNIA 95453

**RESURFACING AND  
STRIPING PLAN**

FROM STA 1+00 TO STA 11+50

DRAWN BY	TRC/IGH
DESIGN BY	LEE
SCALE	AS NOTED
DATE	01/16/2024
BID#	24-16
JOB	1906-NL CUTOFF IOL
FILE	NICE-LUCERNE CUTOFF SBI
SHEET	2 OF 4

DISTRICT	COUNTY	ROUTE	POST MILES TOTAL PROJECT	Rev #	Comments	Drawn By
01	LAKE	29	0.81			
SCOTT DeLEON RCE 46574 REGISTERED CIVIL ENGINEER				DATE		
PLANS APPROVAL DATE						
NOTICE: THE COUNTY OF LAKE OR ITS EMPLOYEES OR AGENTS SHALL NOT BE RESPONSIBLE FOR THE ACCURACY OR COMPLETENESS OF PRINTED COPIES OF THESE CONSTRUCTION DOCUMENTS.						
						
<b>COUNTY OF LAKE</b> PUBLIC WORKS DEPARTMENT COURTHOUSE, 255 N. FORBES STREET LAKEPORT, CALIFORNIA 95453 WEBSITE: WWW.COLAKE.CA.US PHONE: (707) 263-2341 FAX: (707) 263-7748						
<b>NICE-LUCERNE CUTOFF ASPHALT REHABILITATION PROJECT</b> SR 29 & NICE-LUCERNE CUTOFF LAKEPORT, CALIFORNIA 95453						
<b>TRAFFIC CONTROL SIGNS</b>						
DRAWN BY: TRC/IGH						
DESIGN BY: LEE						
SCALE: AS NOTED						
DATE: 01/16/2024						
BID# <b>24-16</b>						
JOB: 1926-NL CUTOFF OIL						
FILE: NICE-LUCERNE CUTOFF SB1						
SHEET <u>3</u> OF <u>4</u>						

TRAFFIC CONTROL FOR RAMP CLOSURE

SEE NOTE 1

CONSTRUCTION MESSAGE BOARD

W20-3 SIGN "RAMP CLOSED AHEAD"  
SEE NOTE 2

W20-3 SIGN "RAMP CLOSED AHEAD"  
SEE NOTE 2

RAMP CLOSURE

TO UPPER LAKE

W20-1 SIGN "ROAD WORK AHEAD"  
SEE NOTE 3 SHOWN HEREON

W20-1 SIGN "ROAD WORK AHEAD"  
SEE NOTE 3 SHOWN HEREON

TO NICE

G20-2 SIGN "END ROAD WORK"  
SEE NOTE 3

G20-2 SIGN "END ROAD WORK"  
SEE NOTE 3 SHOWN HEREON

W20-1 SIGN "ROAD WORK AHEAD"  
SEE NOTE 3

PROJECT  
LIMIT

G20-2 SIGN "END ROAD WORK"  
SEE NOTE 3

PROJECT  
LIMIT

TRAFFIC CONTROL FOR RAMP CLOSURE

SEE NOTE 1

RAMP CLOSURE

W20-3 SIGN "RAMP CLOSED AHEAD"  
SEE NOTE 2 SHOWN HEREON

W20-3 SIGN "RAMP CLOSED AHEAD"  
SEE NOTE 2 SHOWN HEREON

CONSTRUCTION MESSAGE BOARD

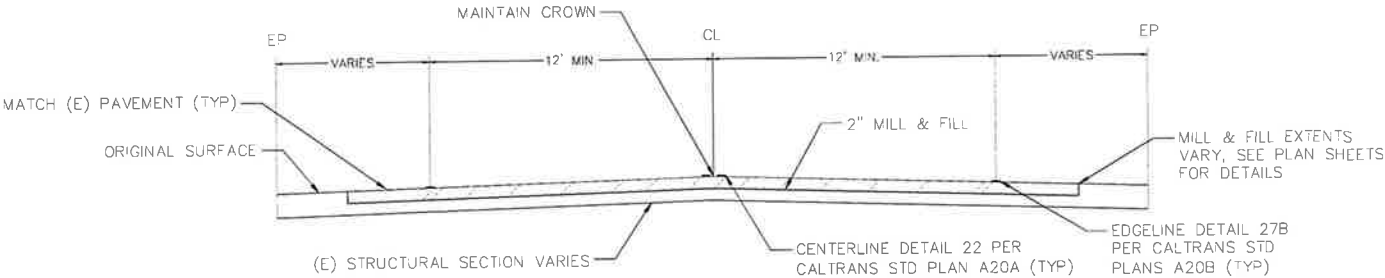
29

TO LAKEPORT

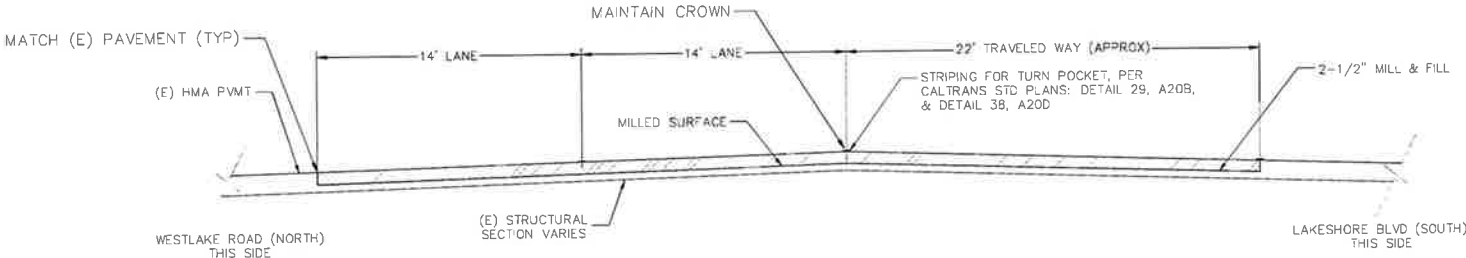
W20-1 SIGN "ROAD WORK AHEAD"  
SEE NOTE 3 SHOWN HEREON

NOTES:

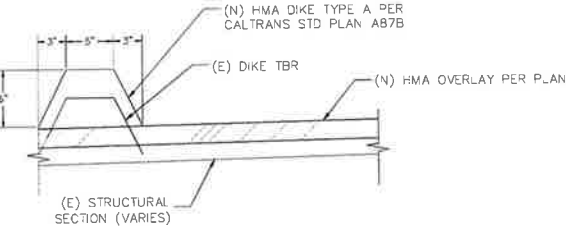
1. TRAFFIC CONTROL SYSTEM FOR RAMP CLOSURE SHALL BE PER CALTRANS STANDARD PLAN T14 AND SHALL ONLY APPLY ON THE DAY OF ACTUAL RAMP CLOSURE. CONSTRUCTION MESSAGE BOARDS SHALL BE IN PLACE 10 DAYS PRIOR TO RAMP CLOSURE.
2. W20-3 SIGNS TO BE 48"x48" WITH SAFETY FLAGS AND ADJACENT REFLECTIVE CONE.
3. G20-2 & W20-1 SIGNS TO BE MOUNTED PER CALTRANS STANDARD PLANS RS-1 AND RS-2 AND SHALL BE CONSTRUCTION ORANGE WITH BLACK LETTERING. W20-1 SHALL BE DIAMOND SHAPED, 48"x48" IN SIZE. G20-2 SHALL BE RECTANGULAR 48"x24".
4. TRAFFIC CONTROL FOR LANE CLOSURE SHALL BE PER CALTRANS STANDARD PLANS T13.



1 TYPICAL SECTION (STATION 1+00 TO 9+00)  
SCALE : NTS



2 TYPICAL SECTION @ LAKESHORE BLVD  
(STATION 9+00 TO 11+41)  
SCALE : NTS

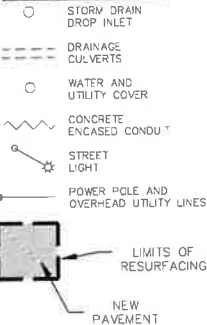


3 (N) HMA DIKE  
SCALE : NTS

### ABBREVIATIONS

AB	AGGREGATE BASE	INV	INVERT GRADE
AC	ASPHALT CONCRETE	JB	JUNCTION BOX
AGG	AGGREGATE	L	LENGTH
BC	BEGIN CURVE	LF	LINEAR FEET
BCG	BEGIN CROSS GUTTER	LON	LENGTH OF NEED
BCGSW	BEGIN CURB, GUTTER & SIDEWALK	LP	LOW POINT
BCR	BEGIN CURB RETURN	LVC	LENGTH VERTICAL CURVE
BCRP	BEGIN CURB RAMP	MAX	MAXIMUM
BDDW	BEGIN DEPRESSED DRIVEWAY	MIN	MINIMUM
BI	BEGIN IMPROVEMENTS	NEW	NEW
BLDG	BUILDING	NO	NUMBER
BM	BENCHMARK	NTS	NOT TO SCALE
BOP	BEGINNING OF PROFILE	OC	ON CENTER
BRC	BACK ROLLED CURB	OH	OVERHEAD
BVC	BEGIN VERTICAL CURVE	PVMT	PAVEMENT
BW	BACK OF SIDEWALK	PCC	PORTLAND CEMENT CONCRETE
B/W	BOTH WAYS	PL	PROPERTY LINE
C&G	CURB AND GUTTER	PP	POWER POLE
CG	CROSS GUTTER	PRC	POINT OF REVERSE CURVATURE
CG&S	CURB GUTTER AND SIDEWALK	PT	POINT
CI	CURB INLET	PUE	PUBLIC UTILITY EASEMENT
CL	CENTERLINE	PVC	POLYVINYL CHLORIDE PIPE
CSP	CORRUGATED STEEL PIPE	PVI	POINT OF VERTICAL INTERSECTION
CSPA	CORRUGATED STEEL PIPE ARCH	R=	RADIUS
CO	CLEANOUT	RC	RELATIVE COMPACTION
CONC	CONCRETE	REL	RELATIVE
CR	CURB RETURN	REQ'D	REQUIRED
CULV	CULVERT	R/W	RIGHT OF WAY
D	DELTA ANGLE	SHT	SHEET
DI	DROP NLET	SCT	SAW-CUT
DIA	DIAMETER	SD	STORM DRAIN
DWG	DRAWING	SDMH	STORM DRAIN MANHOLE
DRWY	DRIVEWAY	S=	SLOPE
EC	END CURVE	SP	STANDARD PLAN
ECG	END CROSS GUTTER	SS	SANITARY SEWER
ECR	END CURB RETURN	SSCO	SANITARY SEWER CLEANOUT
ECRP	END CURB RAMP	SSMH	SANITARY SEWER MANHOLE
EG	EXISTING GRADE	STA	STATION
EL., ELEV.	ELEVATION	STD	STANDARD
ELEC.	ELECTRIC	SW	SIDEWALK
EP, EOP	EDGE OF PAVEMENT	TA	TOP OF ASPHALT
ESMT	EASEMENT	TB	TOP OF BANK
EVC	END VERTICAL CURVE	TBR	TO BE REMOVED
(E)	EXISTING	TC	TOP OF CURB
FC	FACE OF CURB	TDC	TOP DEPRESSED CURB
FES	FLARED END SECTION	TFC	TOP FLUSH CURB
FF	FINISH FLOOR	TG	TOP OF GRATE
FG	FINISH GRADE	TOE	TOE OF BANK
FH	FIRE HYDRANT	TOP	TOP OF BANK
FL	FLOWLINE	TR	TO REMAIN
FM	FORCED MAIN	TS	TOP OF SLAB (OR SIDEWALK)
GB	GRADE BREAK	TW	TOP OF WALL
GV	GATE VALVE	TYP	TYPICAL
HORIZ	HORIZONTAL	W	WATER
HMA	HOT MIX ASPHALT	WM	WATER METER
HP	HIGH POINT	WV	WATER VALVE
HWY	HIGHWAY	VERT	VERTICAL

### MISC. SYMBOL LEGEND



COUNTY OF LAKE  
PUBLIC WORKS DEPARTMENT  
COURTHOUSE, 255 N. FORBES STREET  
LAKEPORT, CALIFORNIA 95453  
WEBSITE: WWW.COLLAKE.CA.US  
PHONE: (707) 263-7748

NICE-LUCERNE CUTOFF  
ASPHALT REHABILITATION  
PROJECT  
SR 29 & NICE-LUCERNE CUTOFF  
LAKEPORT, CALIFORNIA 95453

DETAILS  
TYPICAL X-SECTIONS  
MISC. DETAILS  
LEGEND

DRAWN BY	TRC/IGH
DESIGN BY	LEE
SCALE	AS NOTED
DATE	01/16/2024
BID#	24-16
JOB	1906-NL CUTOFF OL
FILE	NICE-LUCERNE CUTOFF SB1
SHEET	4 OF 4