

Multi Counties: Billing Overview

Dashboard visualization updated 4/29/24. See "Dashboard Change Log" for more details.

CalMHSA Collective PROD

Data Refreshed 5/15/2024 4:24:01 AM.  
Using data 7/1/23 through 5/14/2024

County

Area

Svc Year, Month

ProgramName

Recoverable, Payer Name

Custom ProcID

Show Data Notes

All

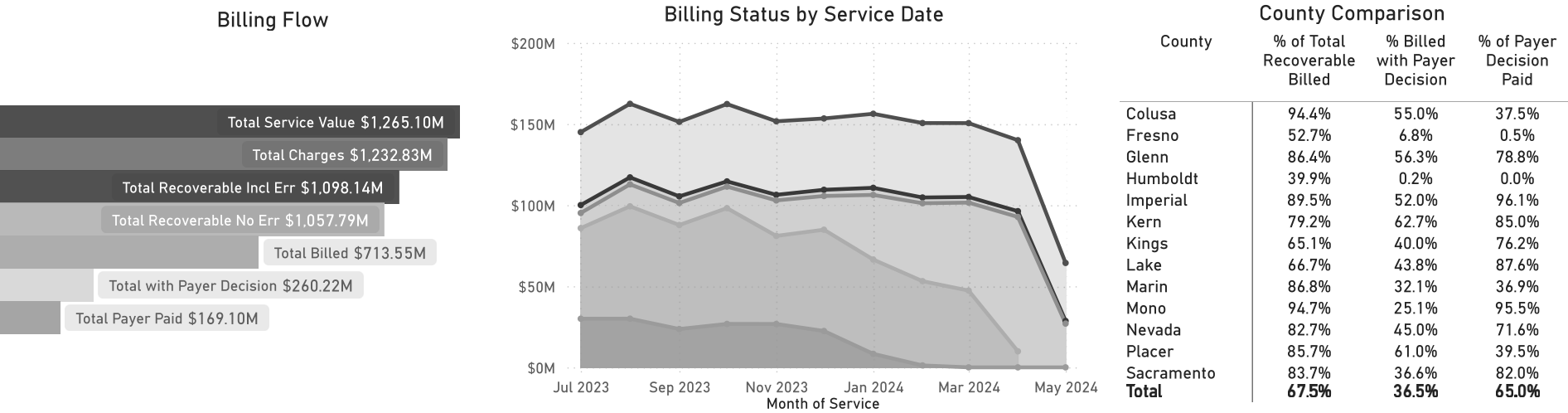
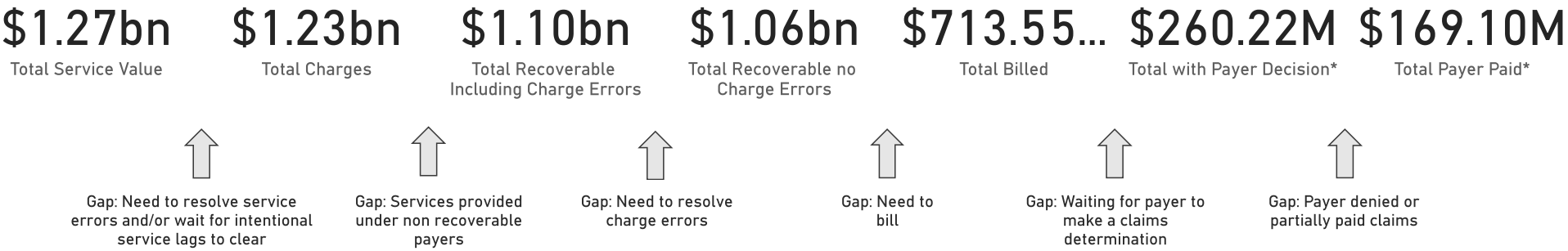
MH

All

All

Multiple selections

All



\*Due to delays in DHCS 835 reporting, Total with Payer Decision and Total Payer Paid are likely underreported. DHCS estimates this will be resolved in mid May.