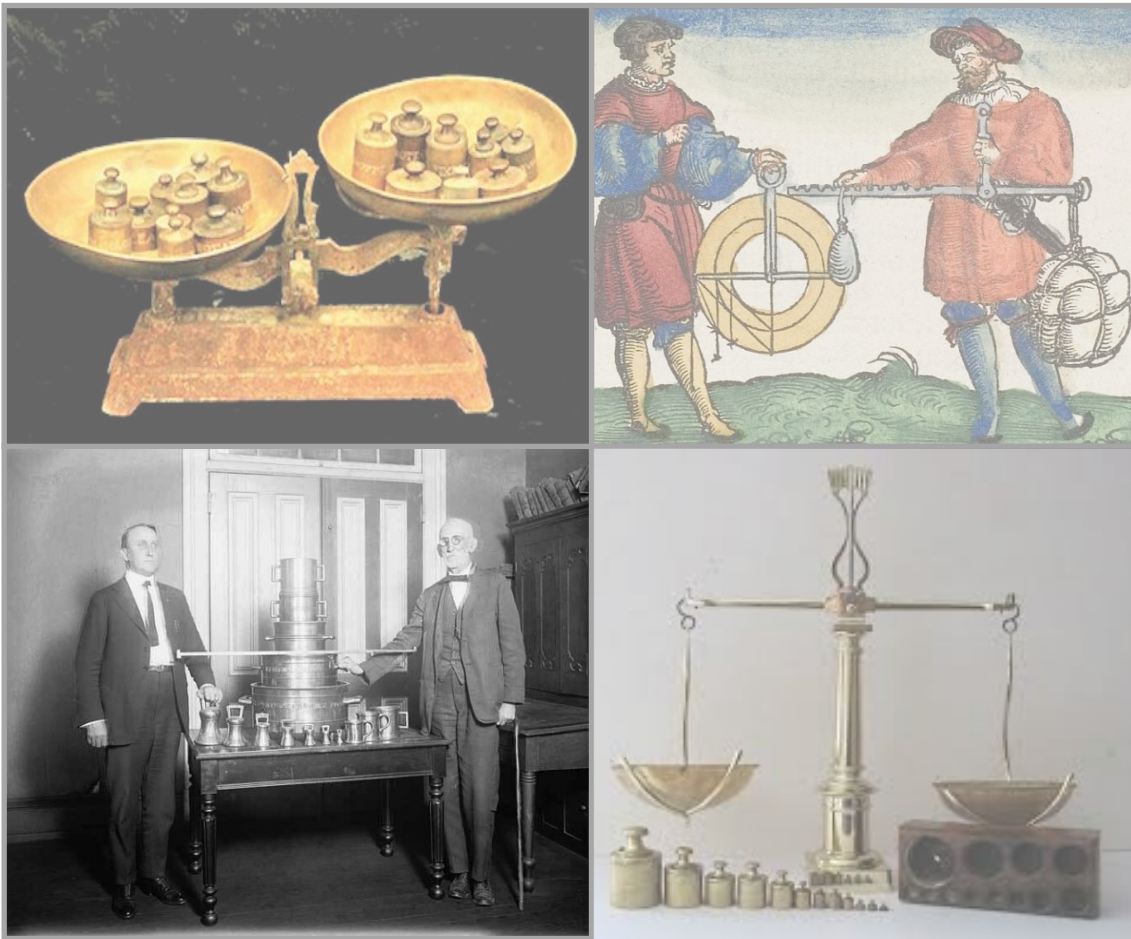


# 2025 Lake County Weights & Measures Report



**Providing Consumer Protection and  
Equity in the Marketplace**

## FY 2023/2024 Weights and Measures Statistics

Weights and Measure Expenditures .....	\$156,932.56
Weights and Measures Revenue .....	\$83,719.33

Total Employees ..... 6

*\* Employees also work in agricultural programs\**

Total Weights and Measures Program Hour ..... 2,093

Businesses Inspected (unique locations) ..... 213

Total Inspections Performed (devices) ..... 889

Consumer Concerns Investigated ..... 17

### Devices Registered in Lake County

Gas Pumps ..... 809

Counter and Computing Scales ..... 145

Large Capacity Scales ..... 64

Propane Meters ..... 58

Electric Meters ..... 1229

Vapor Meters ..... 2142

Cannabis Scales ..... 66

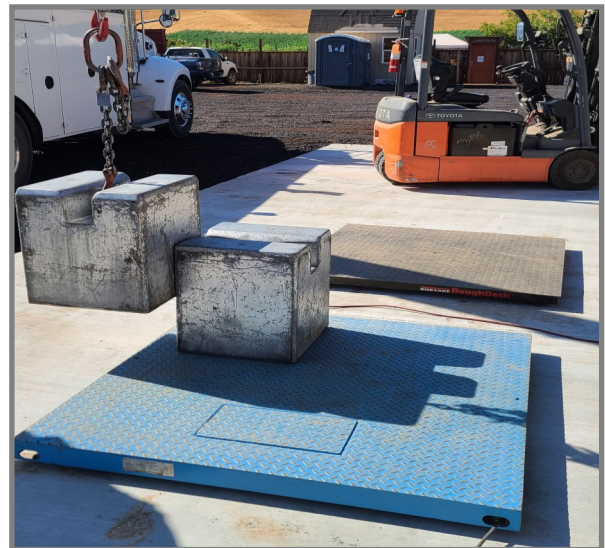
Notices of Violation Issued ..... 25

### Common Violations:

- Weighing/Measuring equipment not maintained accurately by a business
- Required signage or labeling missing or illegible
- Sub-metered bills inaccurate or missing information
- Customer not able to see price or weight of item displayed at time of purchase

# Scales

There are many types of commercial scales in Lake County and every commercial scale must be tested once a year. Different certified weights are used to test different capacity scales. For testing large capacity scales such as vehicle scales at rock quarries, wineries, packing sheds and waste management facilities, we use our brand new crane truck designed to carry large cast iron weights. Small capacity scales, such as those at farmers markets and grocery stores, are tested using a weight kit consisting of smaller weights. When a scale passes inspection we place an official Lake County seal on it proclaiming its accuracy. If a scale fails, we attach a red tag taking it out of service until it is repaired.



# Gas Pumps

Lake County has 33 gas stations and approximately 809 retail fuel meters (gas pumps). These meters are required to be tested and sealed on a yearly basis. In order to complete our inspection, ten gallons is delivered into certified provers (test measures) to determine if the gas pump has delivered an accurate amount of fuel. Fuel meters that pass inspection are sealed with an official Lake County seal. Meters that do not pass inspection are red tagged and taken out of service until they are repaired.



STATE OF CALIFORNIA  
DEPARTMENT OF FOOD AND AGRICULTURE  
DIVISION OF MEASUREMENT STANDARDS

**This Device is  
OUT OF ORDER**

NO. \_\_\_\_\_

DATE \_\_\_\_\_  
OWNER / USER \_\_\_\_\_  
CITY \_\_\_\_\_  
STATE \_\_\_\_\_ ZIP \_\_\_\_\_  
DEVICE \_\_\_\_\_  
MODEL NO. \_\_\_\_\_  
SERIAL NO. \_\_\_\_\_  
OFFICIAL \_\_\_\_\_  
REMARKS \_\_\_\_\_

NO. \_\_\_\_\_

DATE \_\_\_\_\_  
OWNER / USER \_\_\_\_\_  
ADDRESS \_\_\_\_\_  
CITY \_\_\_\_\_  
DEVICE \_\_\_\_\_  
MODEL NO. \_\_\_\_\_  
SERIAL NO. \_\_\_\_\_

48-013 (REV. 2/79)

**This Device is  
OUT OF ORDER  
DO NOT REMOVE THIS TAG**

DO NOT USE OR DISPOSE OF THIS DEVICE  
SUBJECT TO SEIZURE IF NOT CORRECTED WITHIN 30 DAYS  
(SECTIONS 12507 AND 12508 B & P CODE)

THE ABOVE DEPARTMENT SHALL BE NOTIFIED WITHIN  
24 HOURS AFTER COMPLETION OF REPAIR WORK  
(SECTION 12515 B & P CODE)

AUTHORIZED REPAIRMEN MAY REMOVE THIS TAG AFTER REPAIRS  
AND RETURN IT WITH PLACED IN SERVICE REPORT  
(SECTION 12509 B & P CODE)

REPAIRMAN NO. \_\_\_\_\_ DATE \_\_\_\_\_  
SIGNATURE \_\_\_\_\_  
OFFICIAL \_\_\_\_\_  
REMARKS \_\_\_\_\_

**California law  
requires that:**

**Free air and water  
must be available to  
customers who  
purchase gasoline or  
diesel fuel.**


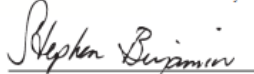
**Gas stations must  
provide refueling  
service to disabled  
persons except during  
hours when they are  
understaffed.**

***If required services are not advertised or offered,  
or you suspect a pump is not operating correctly,  
please call us at (707)263-0217.***



# Type Evaluation and Cannabis Scales

Commercial cannabis farms are required to enter the weight of harvested cannabis into California's "Track and Trace" program. This program works to ensure that legally sold cannabis is the same cannabis that was legally grown. Because the weights entered into this program have legal importance they are required to be taken using a scale that is legal for trade. As with all commercial weighing and measuring devices, our job is to not only inspect these scales but we also need to ensure that they have been approved for legal use. Legal for trade scales are both certified by the National Type Approval Program (NTEP) and or the California Type Evaluation Program (CTEP). Either of these types of approved scales are acceptable.

  NATIONAL TYPE EVALUATION PROGRAM		Certificate Number: 17-021A3 Page 1 of 3
<i>Certificate of Conformance</i> <i>for Weighing and Measuring Devices</i>		
<b>For:</b> Non-Computing Scale Digital, Electronic Model: SPS-xxxx.R and SPS-xxxx.N D <sub>max</sub> : 21 000 to 100 000 (See table) C <sub>min</sub> : 0.01 g & 0.1 g (See table) Capacity: 210 g to 8100 g Platform: (See table) Accuracy Class: II	<b>Submitted By: Contact Info. Updated October 2022</b> Schuler Scientific 2860 South Vallejo Street, Unit B Englewood, CO 80110 Tel: 800-539-1886 Fax: 305-835-9136 Contact: Lynsey Capra Email: <a href="mailto:lynsey.capra@schulersci.com">lynsey.capra@schulersci.com</a> Web site: <a href="http://www.schulersci.com">www.schulersci.com</a>	
<b>Standard Features and Options</b>		
<ul style="list-style-type: none"><li>• Automatic Zero Tracking (AZT)</li><li>• Initial Zero Setting Mechanism (IZSM)</li><li>• Semi-Automatic Zero (Push Button)</li><li>• Keyboard Tare</li><li>• Multiple Tare Memories</li><li>• Programmable Tare</li><li>• Semi-Automatic (Push Button) Tare</li><li>• AC Power</li><li>• DC Power</li><li>• Power Savings/Sleep Mode</li><li>• Alphanumeric Display</li><li>• Customer (Dual) Display (optional)</li><li>• Integral Display</li><li>• Liquid Crystal Display (LCD)</li><li>• Remote Customer Display (optional)</li><li>• RS232/USB/Wi-Fi</li><li>• Wireless Communication (optional)</li></ul>		
<b>Temperature Range:</b> 10° C to 40° C (50° F to 104° F)		
<small>This device was evaluated under the National Type Evaluation Program and was found to comply with the applicable technical requirements of "NIST Handbook 44: Specifications, Tolerances and Other Technical Requirements for Weighing and Measuring Devices." Evaluation results and device characteristics necessary for inspection and use in commerce are on the following pages.</small>		
 Craig VanBuren Chairman, NCWM, Inc.	 Stephen Benjamin Chair, NTEP Committee Issued: May 5, 2020	
1135 M Street, Suite 110 / Lincoln, Nebraska 68508		
<small>The National Conference on Weights and Measures (NCWM) does not approve, recommend or endorse any proprietary product or material, either as a single item or as a class or group. Results shall not be used in advertising or sales promotion to indicate explicit or implicit endorsement of the product or material by the NCWM.</small>		

## Scales in the Cannabis Industry

The legal cannabis industry is rapidly growing and new businesses emerge on a yearly basis. Keeping these businesses in compliance by testing and sealing their scales can be challenging. Unlike many traditional businesses that have commercial scales, cannabis farms are often in remote areas, behind locked gates, and managed by people unfamiliar with weights and measures regulations. Not only can it be difficult to gain access to test these scales but often these scales are not legal for commercial use or do not pass inspection due to their sensitive operating parameters.

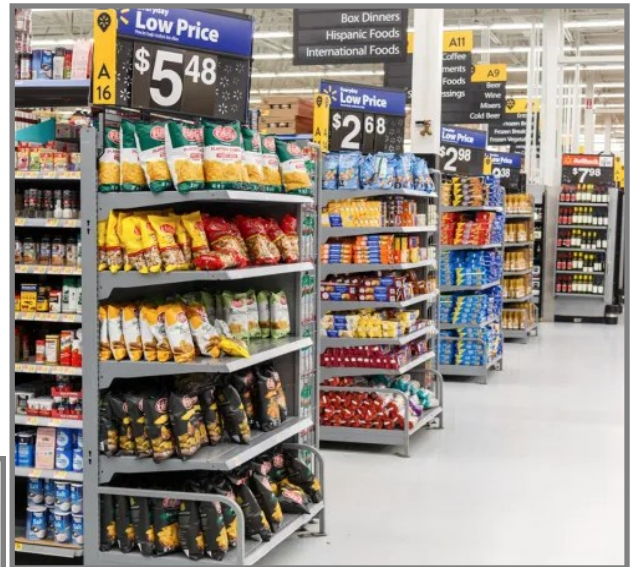


## Price Accuracy

It is against California law for a business to charge more than the store's posted or advertised price. Customers are entitled to the lowest advertised or posted price for any item offered for sale by a store. When prices change it is the stores responsibility to make sure the price advertising changes too.



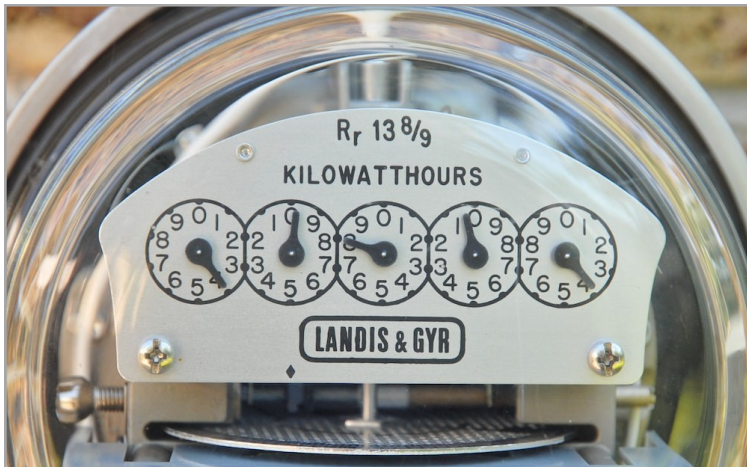
Lake County Weights and Measures conducts spot inspections on businesses to ensure that barcode scanners are charging customers the posted price. Consumers are encouraged to report, to our office, overcharges or instances where a store refused to honor the lowest advertised or posted price of a product.



**By law there is no such thing as an expired sale sign. If a sale sign is still up, that is the price that the consumer is entitled to pay by law.**

## Sub-Meter Testing

There are many mobile home parks, apartment buildings, and other residences in Lake County where utilities are sub-metered. These devices must be tested for accuracy and sealed by Lake County Weights and Measures inspectors every ten years. Our office has a specialized lab and equipment to conduct this testing.



## Sub-Meter Billing

Lake County Weights and Measures inspectors respond to billing complaints related to misread meters, miscalculations, discounts not being applied, and incorrect rates. Tenants of sub-metered properties are encouraged to reach out to our office if their bills are not providing enough information to calculate the utility bill or if the amount appears noticeably different from their normal usage.





## Electric Charging Stations

Electric vehicle charging stations also known as Electric Vehicle Supply Equipment/System (EVSE) are being installed across California. The types of commercial chargers available are either level 2 (240 volt AC slow chargers) or level 3 (DC fast chargers).

**Level 2 (AC)**



**Level 3 (DC)**



Currently Lake County has approximately 12 AC charging station locations and 2 DC charging station locations.

## The Testing Process for Electric Charging Stations

The testing of these devices require special standards for both AC and DC chargers and present challenges to weights and measures inspectors. The testing standards are expensive and, until recently, a DC standard was not yet approved for use. The testing standard technology is rapidly changing and standards purchased a few years ago are already inferior to what is available today.



The California Department of Measurement Standards (DMS) has purchased five AC standards that counties can borrow, but currently do not have a DC standard available. Special training is required of county inspectors before they can borrow and use these standards. Another challenge we face is that charging stations installed in the past are allowed to remain in service, by law, despite not meeting code requirements of other devices such as scales. Requirements such as a screen that indicates kWh delivered and cost per kWh along with other manufacturing information used to determine its' commercial legality are missing on many of these older devices.



# Lake County Department of Agriculture/ Weights & Measures

## Department Staff

### Agricultural Commissioner/Sealer

*Katherine VanDerWall*

### Deputy Agricultural Commissioner/Sealer

*Sam Upton*

### Agricultural Biologist/ Weights & Measures Inspectors

*Janice Luke*

*Michael Sobieraj*

*Adam Benton*

### Administrative Assistant

*Jessica Bartholf*



883 Lakeport Blvd  
Lakeport, CA 95453  
Phone: (707) 263-0217  
Fax: (707) 263-1052  
Email: lakeag@lakecountyca.gov



Find us on Facebook <https://www.facebook.com/LakeCountyAg/>