

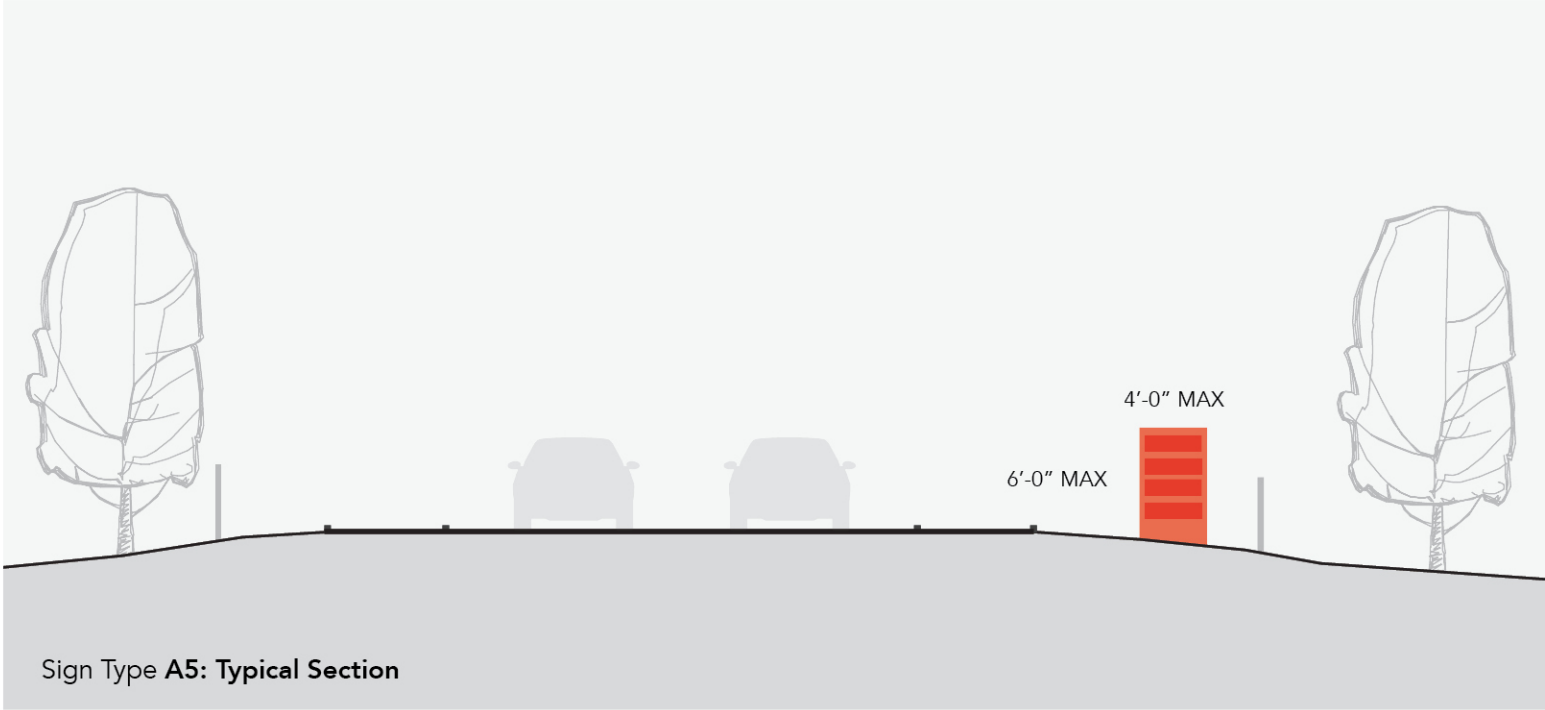
SIGNAGE & WAYFINDING VEHICULAR DIRECTIONAL CONCEPTS

A5 VEHICULAR DIRECTIONAL

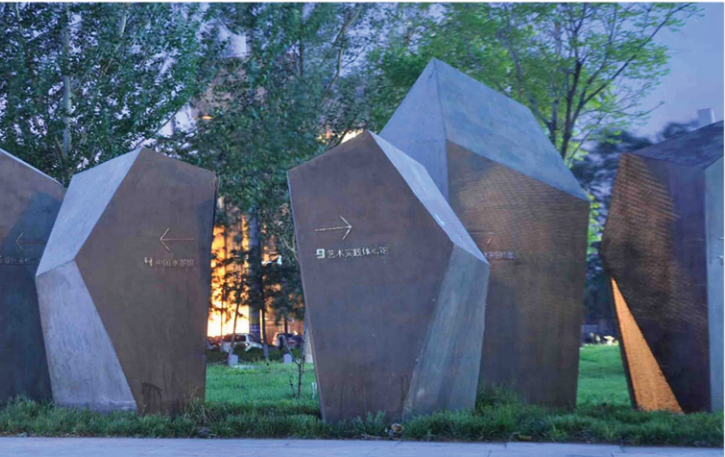
Height	6'-0" max
Width	4'-0" max
Area (SqFt)	24 SqFt max
Logo / Copy Ht.	Directional Copy: 6" max
Quantity	8
Illumination	Internal or External



The Vehicular Directional sign facilitates movement throughout the site by connecting important points along the primary path of arrival. Sign locations will anticipate decision making points, insuring that guests can read and have time to respond while driving. Strong legibility will be achieved through high contrast letter forms and appropriately sized text and arrows for the speed of travel along Butts Canyon Road.



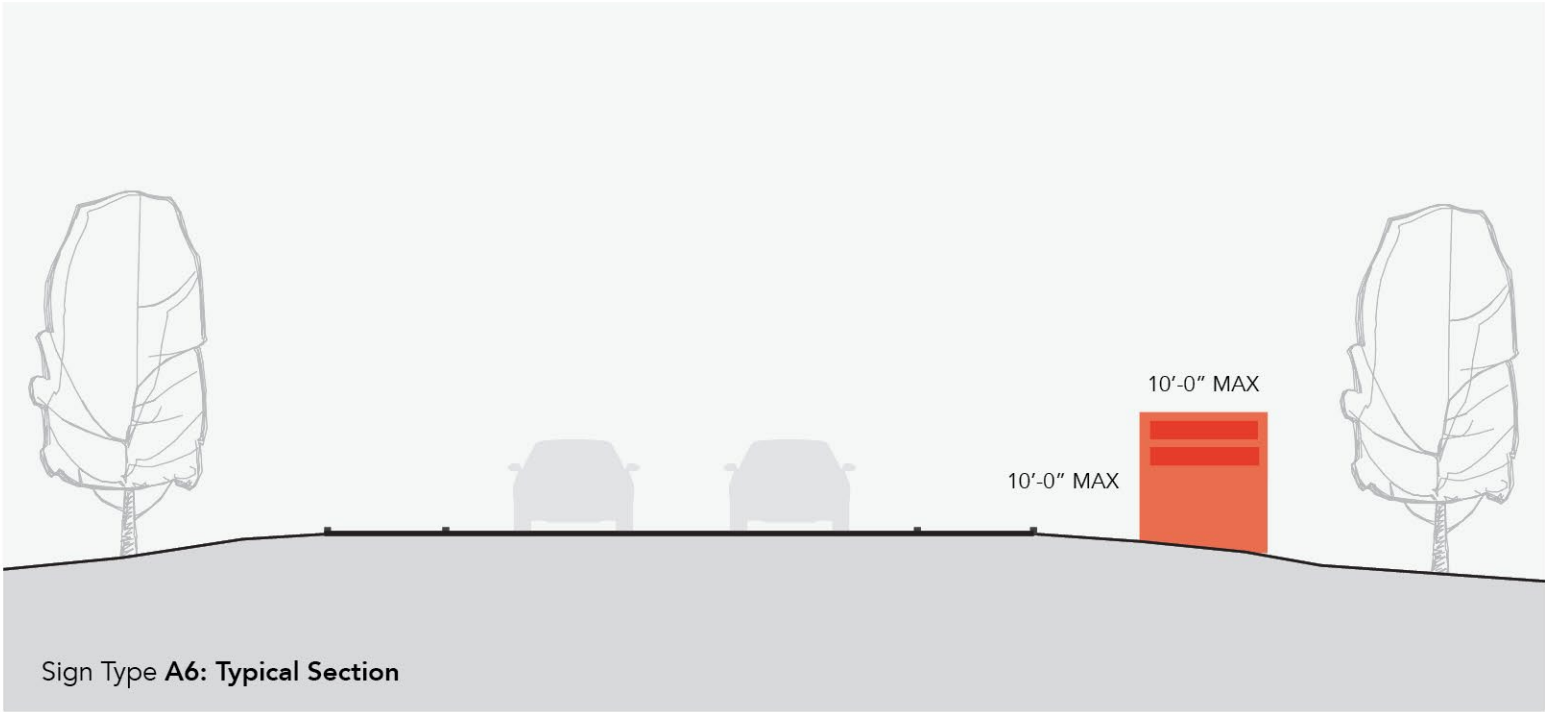
Sign Type A5: Typical Section





SIGNAGE & WAYFINDING POTENTIAL OFF SITE DIRECTIONAL CONCEPTS

A6 OFF SITE DIRECTIONAL IDENTITY



Height	10'-0" max
Width	10'-0" max
Area (SqFt)	100 SqFt max
Logo / Copy Ht.	Logo: 18" max Directional Copy: 8" max
Quantity	1
Illumination	Internal or External



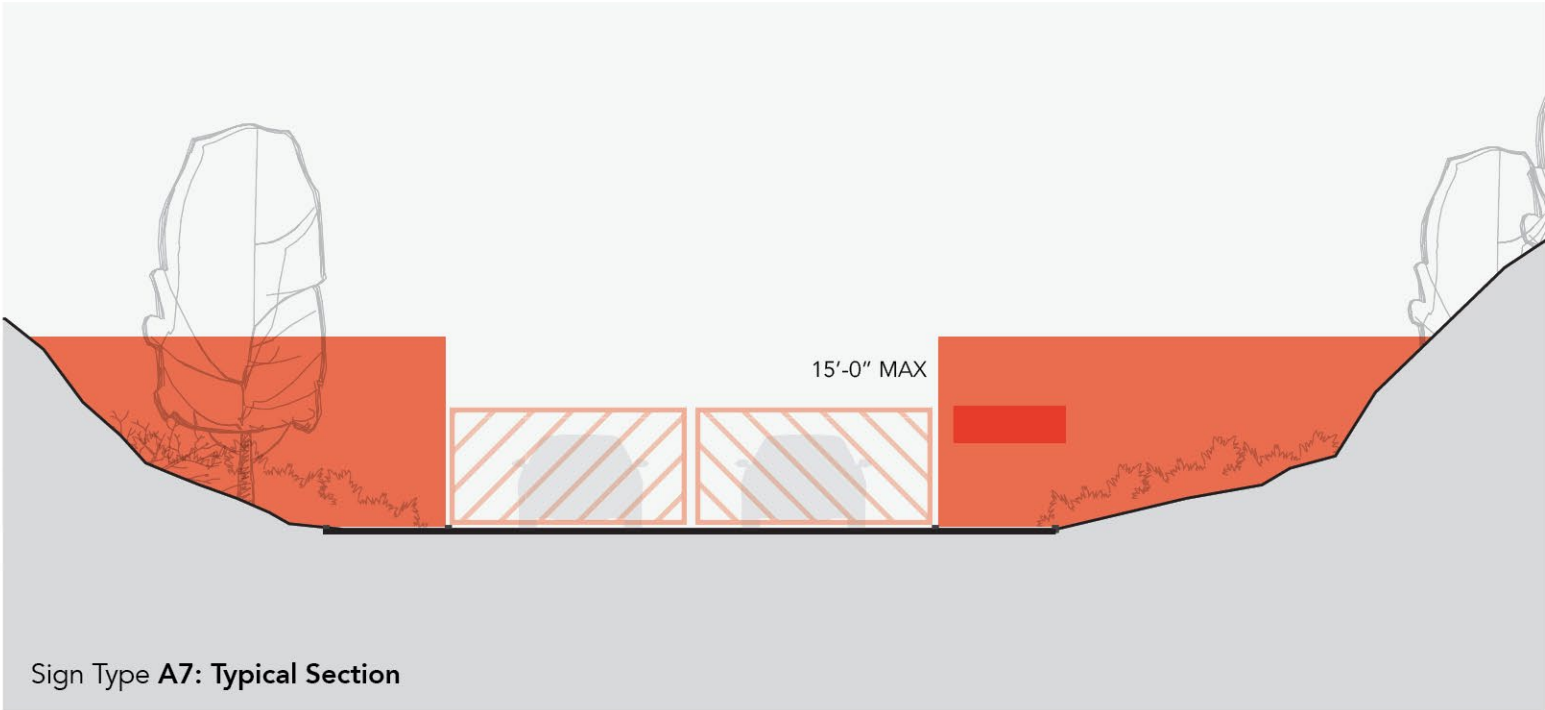
The Off Site Directional Identity acts as a welcoming signal for guests arriving to site. The primary purpose of this sign is to direct guests down Butts Canyon Road towards the resort entries. Larger in scale, this project identification and directional signage sits at the intersection of Butts Canyon Road and Highway 29.



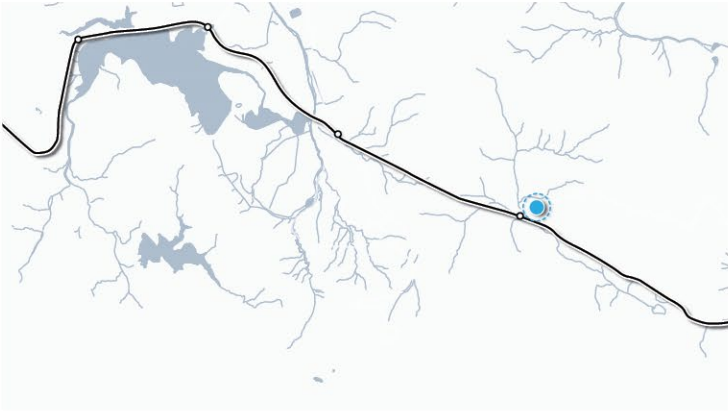


# SIGNAGE & WAYFINDING RESORT ENTRY GATE CONCEPT

## A7 RESORT GUEST ENTRY GATE



Height	15'-0" max
Width	TBD
Area (SqFt)	TBD
Logo / Copy Ht.	Logo: 24" max Address: 6" max
Quantity	1
Illumination	Internal or External



The Resort Entry Gate is located approximately 50'-0" from Butts Canyon Road at the main site entry. This gate establishes a "sense of arrival" and clearly communicates the project entry and complies with the code for a gated entry on private roads.



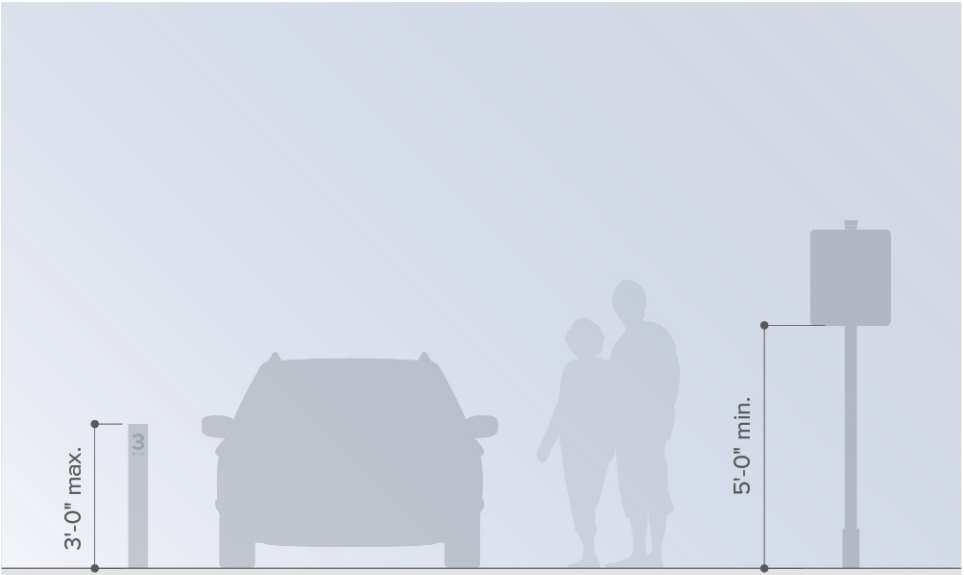


SIGNAGE & WAYFINDING REGULATORY & MISC. SIGNAGE CONCEPTS



STREET SIGNS & REGULATORY

Street name and regulatory signs may be posted at intersections, and are usually perpendicularly oriented pairs identifying each of the crossing streets. Public streets must follow design requirements per city code.



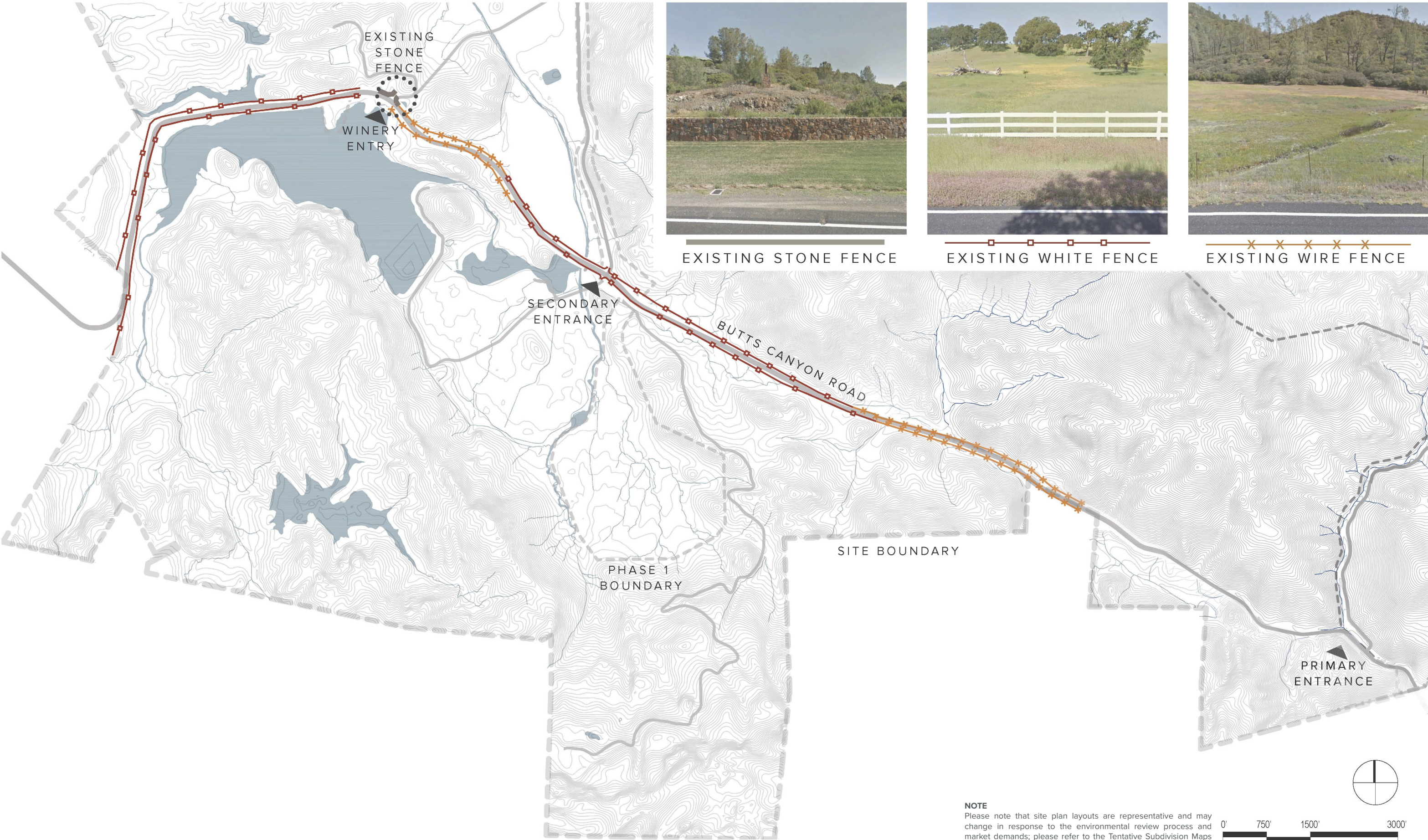
MILE MARKERS & FIRE SAFETY

Mile Markers and Fire Safety signs will be posted as required per local code. These signs will be designed to fit within the overall brand vocabulary and are intended to assist motorists, pedestrians, and the Fire Authority.





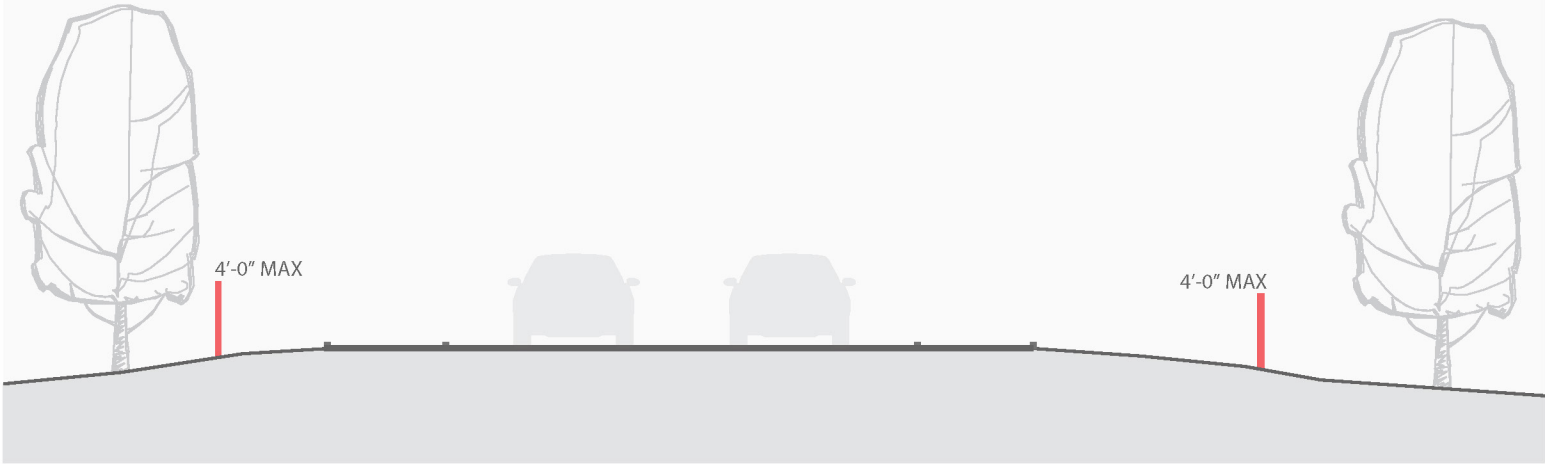
FENCING CURRENT LOCATION & STYLE





# FENCING POTENTIAL FENCE TYPES VISIBLE FROM THE PUBLIC STREETSCAPE

## TYPICAL EXISTING FENCING SECTION



## EXISTING AND POTENTIAL FENCING CONDITON

Three types of fence are currently visible along Butts Canyon Road within the project site: white fencing, wire fencing, and stone fencing. These fence edges currently offer a distinct demarcation of the project site.

These fences may remain or eventually be replaced by three potential fence types: post and rail fencing, wire fencing, and stone and landscape edging. Any fence replacement will be maximum 4 feet tall, which follows standards set by Lake County’s Fences, Hedges and Walls code. Potential new fence locations and styles will be closely integrated with the existing landscape and topography along Butts Canyon Road. Any introduced changes to fencing will improve site identity for passerbys and the arrival experience for guests.

## POTENTIAL FENCE TYPES VISIBLE FROM THE PUBLIC STREETSCAPE

POST AND RAIL FENCING



WIRE FENCING



STONE & LANDSCAPE EDGE





# PROJECT TEAM ACKNOWLEDGEMENTS

## OWNERSHIP REPRESENTATIVE AND APPLICANT

Lotusland Investment Holdings, Inc.

### DEVELOPMENT TEAM

**Guenoc Valley Developments**  
Jonathan Breene, Director  
Chris Meredith, Director  
Nick Fung, Director  
Garry Hastings, Director  
Kevin Case, Managing Partner  
Hal Thannisch, Development Manager  
Florent Gateau, Operations

### ENTITLEMENT MANAGER

**Palisades Land Use**  
Kirsty Shelton, MS, AICP, LEED AP Principal Planner  
Rachel Lenihan, Associate Planner

### LEGAL

**Coblentz Patch Duffy & Bass LLP**  
Robert Hodil, Partner

### GUENOC RANCH MANAGEMENT

Randy Sternberg, Vice President  
Tiffani Moore, Administrative Manager

### CIVIL ENGINEERS

**Sherwood Engineers**  
Cody Anderson, PE Principal  
Mike Hastings, PE Project Manager  
Will Weddig, Project Engineer  
Armeen Rassouli, Design Engineer

### WATER AND WASTEWATER ENGINEERING

**Fall Creek Engineering**  
Peter Haase, M.S., P.E., Principal Engineer  
Janice Westlake, P.E., Senior Associate Engineer

### ELECTRICAL ENGINEERING

**Axiom Engineers**  
Ray Cole, Principal President CEO  
Jay Kohler, P.E., Principal  
Adam Bayer, P.E., Principal

### ARCHITECTS

**Backen & Gillam**  
Howard Backen, Principal  
Marta Alabau, Architect & Director of Operations  
Kyle Busald, Architect  
Laura Riggs, Architect  
Jolanta Gorecki, Architect

**Design Realization**  
Ed Tuttle, Principal Architect  
Leonie Delussanet, Architect  
Jean Cadillac, Architect

**Denniston International**  
Jean-Michel Gathy, Principal Architect  
David Ogilby, Master Planner and Design Architect

**Figueras Design Group (FDG)**  
Ignacio Figueras, Partner  
Juan Ignacio Ramos, Partner  
Ignacio Ramos, Partner

**Kerry Hill Architects**  
Kerry Hill, Principal Architect  
Justin Hill, Director  
Bernard Lee, Director

**Renaissance Golf Design**  
Tom Doak, Golf Course Architect

**Verse Design LA**  
Paul R. Tang, Principal  
Courtenay Bauer, Principal  
Mariliana Ramos, Senior Associate  
Ryan McGriff, Senior Designer

**Tented Camp Area Designer**  
Jan Kortland, Designer

### LANDSCAPE ARCHITECTS

**Horizon and Atmosphere Landscape Co. Ltd.**  
Henry Lu, Principal  
Hanni Tang, Landscape Architect

**Prunuske Chatham, Inc.**  
Maggie Jensen, Landscape Architect  
Mike Jensen, Landscape Architect

### SWA

Joe Runco, Managing Principal  
Hui-Li Lee, Principal  
Emily Schlickman, Associate  
Alison Ecker, Designer  
Xiaoyin Kuang, Designer  
Dongyang Wu, Designer

### SIGNAGE AND WAYFINDING

**RSM Design**  
Martin E Schwartz, Principal  
Aaron Ferber, Associate

### FARMING CONSULTANT

**LIFT Economy**  
Erin Axelrod, Partner/worker-owner  
Logan Yonavjak, Specialist

**ARTISTIC RENDERING**  
Tom McClure

### GRAPHIC DESIGNERS

**MRKT**  
Ben Coppelman, Director  
Nicole Hitchins, Graphic Designer