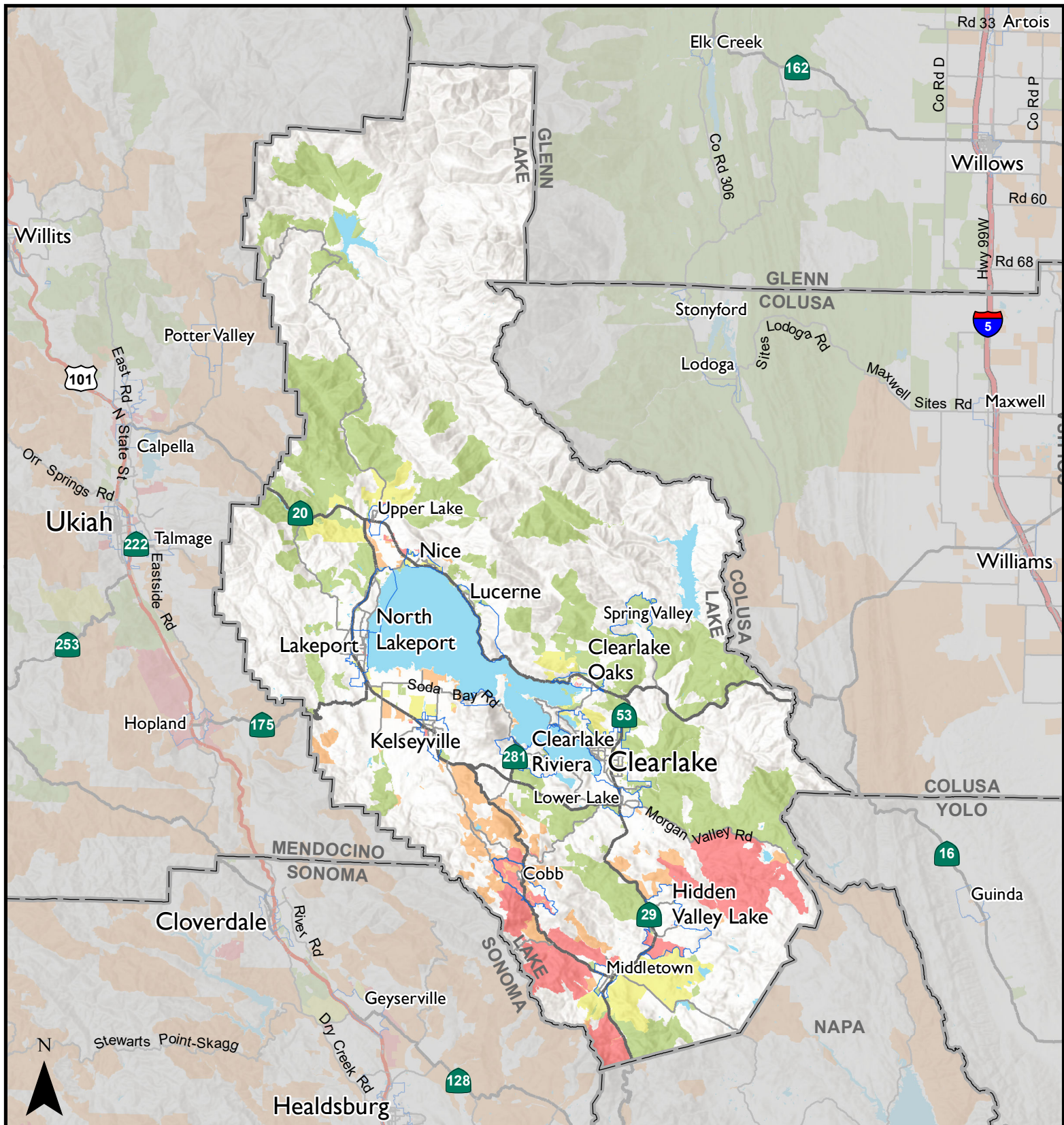


Lake County - CASF Funding Eligibility



- Eligible area (60% Funding Baseline)
- Eligible Dial-up Only area (up to 100% Funding)
- Eligible Low Income area (up to 100% Funding) **
- Eligible Dial-up + Low Income area (up to 100% Funding) **
- City/Town Boundaries

** Low income = Median Household Income for community is less than CARE standard for a family of 4, which is currently \$50,200 (30%). Applicant serves low-income customers for no more than \$15/month (10%)



GEOGRAPHICAL
INFORMATION CENTER
California State University, Chico

0 5 10 20 Miles

Date: 6 March 2019
Projection: NAD 1983 California Teale Albers
Broadband Data Source: California Public Utilities Commission Data as of 31 December 2017