



Policy/Plan for Warming & Cooling Centers

8/13/2024

Summary

On August 1, 2023, before your Board was a discussion and direction to staff regarding crafting a policy/plan for standing up warming and cooling centers, and by extension, clean air centers when the county is inundated by wildfire smoke. Your board directed the Chief Climate Resiliency Officer to convene representatives from the following departments for discussion and policy/plan development:

- Behavioral Health
- Library
- Office of Emergency Services
- Public Health
- Social Services
- Public Services

Additionally, representatives from North Coast Opportunities and the Community Adaptation Program of the American Red Cross volunteered to participate. This representative group began meeting last fall.

Extreme Heat

- According to CDC, about 1/3 of all recorded heat-related deaths in the US have occurred in people's homes just between Jan 1, 2018 – July 13, 2024
- Linked to heart, kidney, and respiratory failure
- Like most states, California does not require air conditioning in rental homes
- CA legislation mandating a maximum safe indoor air temperature stalled in 2022
- AB 209 (2022) requires the Department of Housing and Community Development to develop policy recommendations to ensure that residential dwelling units can maintain a recommended maximum safe indoor air temperature.

Draft recommendations from HCD include:
-- If indoor humidity is below 60%, maximum safe indoor temperatures are 82F without air movement (fans) or 86F with air movement
-- The higher the indoor humidity, the lower the temperature recommendations.

Year	# of days above 95 degrees F
2010	9
2011	4
2012	14
2013	19
2014	19
2015	20
2016	16
2017	33
2018	28
2019	8
2020	34
2021	34

Source: CDC National Environmental Public Health Tracking Network. <https://ephtracking.cdc.gov/DataExplorer>. Accessed on 04/11/2023

Heat Trends in Lake County, 2010-2021

- Annual number of days above 95 degrees F has **increased** over recent years
- In 2020, Lake County had nearly **3x the rate of ED visits** for heat-related illness compared to CA statewide
 - LC: 32 visits per 100,000 people
 - CA: 11 visits per 100,000 people
- Vulnerable populations include:
 - Children under 5 years
 - Adults over 65 years
 - Outdoor workers
 - Households without air conditioning (37% in Lake County in 2009)

Discussions/Suggestions By County Staff

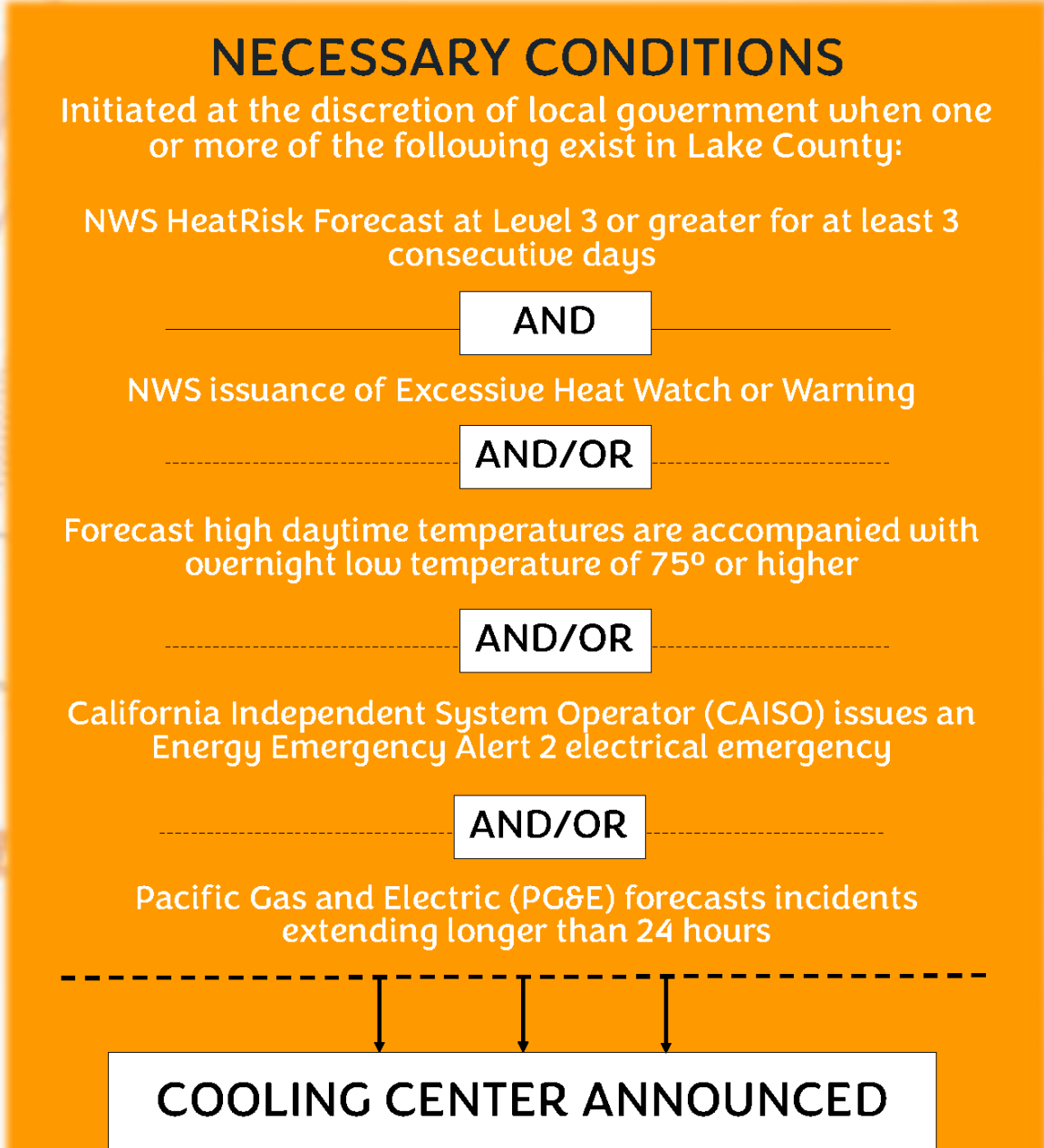
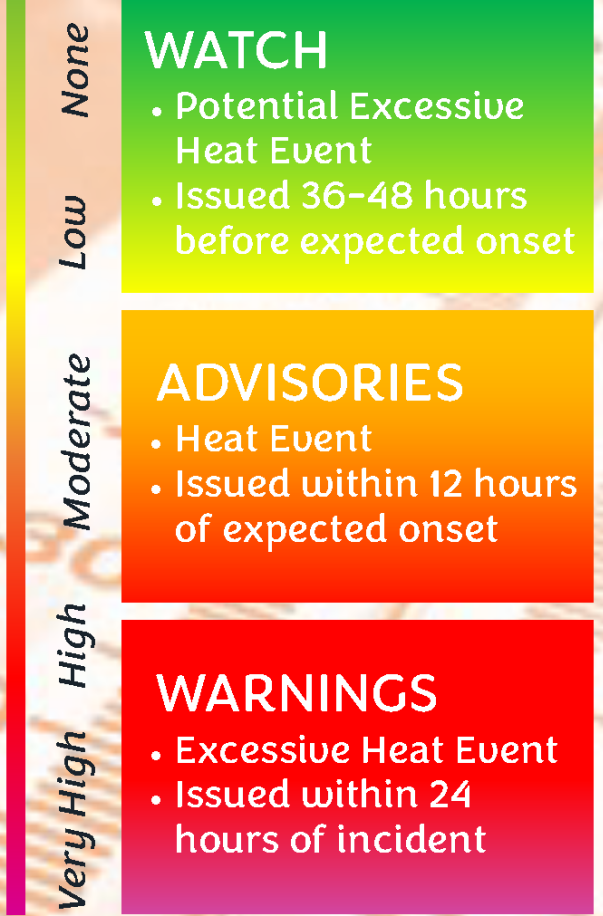
- The County of Lake does not own or operate a stand-alone “Center” but primarily uses Libraries and Peer Support Centers
- Any warming or cooling center opened to the public could include:
 - Trained medical professional onsite
 - Law Enforcement Officer onsite
 - Water, snacks, seating, charging stations
 - HEPA air filtration
 - Air Conditioning (Heating and Cooling)
 - Battery or generator back up
 - Adequate County staffing onsite
 - Be available as the weather dictates (longer than normal operating hours) so overtime or additional staff
 - Training for staff

COOLING CENTER



Necessary
Conditions
for opening

RISK LEVELS



Category	Risk of Heat-Related Impacts
Green 0	Little to no risk from expected heat.
Yellow 1	Minor - This level of heat affects primarily those individuals extremely sensitive to heat, especially when outdoors without effective cooling and/or adequate hydration.
Orange 2	Moderate - This level of heat affects most individuals sensitive to heat, especially those without effective cooling and/or adequate hydration. Impacts possible in some health systems and in heat-sensitive industries.
Red 3	Major - This level of heat affects anyone without effective cooling and/or adequate hydration. Impacts likely in some health systems, heat-sensitive industries and infrastructure.
Magenta 4	Extreme - This level of rare and/or long-duration extreme heat with little to no overnight relief affects anyone without effective cooling and/or adequate hydration. Impacts likely in most health systems, heat-sensitive industries and infrastructure.



For more information, please contact:
NAME at 707.263.xxxx
www.lakecountyca.gov

Necessary Conditions for opening

WATCH

- Potential Freeze Event
- Issued 36-48 hours before expected onset

ADVISORIES

- Frost/Potential Freeze Event
- Issued within 12 hours of incident

WARNINGS

- Freeze Event
- Issued within 24 hours of incident



For more information, please contact:
NAME at 707.263.xxxx
www.lakecountyca.gov

WARMING CENTER



NECESSARY CONDITIONS

Initiated at the discretion of local government when one or more of the following exist in Lake County:

NWS forecasts extremely cold/freezing weather for 3 consecutive days accompanied by night temperatures of 32°F or less

OR

A power outage or electrical emergency lasting for at least 24 hours or overnight

AND

A Frost/Freeze Warning

OR

Low Elevation Snow

WARMING CENTER ANNOUNCED

What are Cooling & Warming Centers?



8/13/24

Per California Department of Public Health

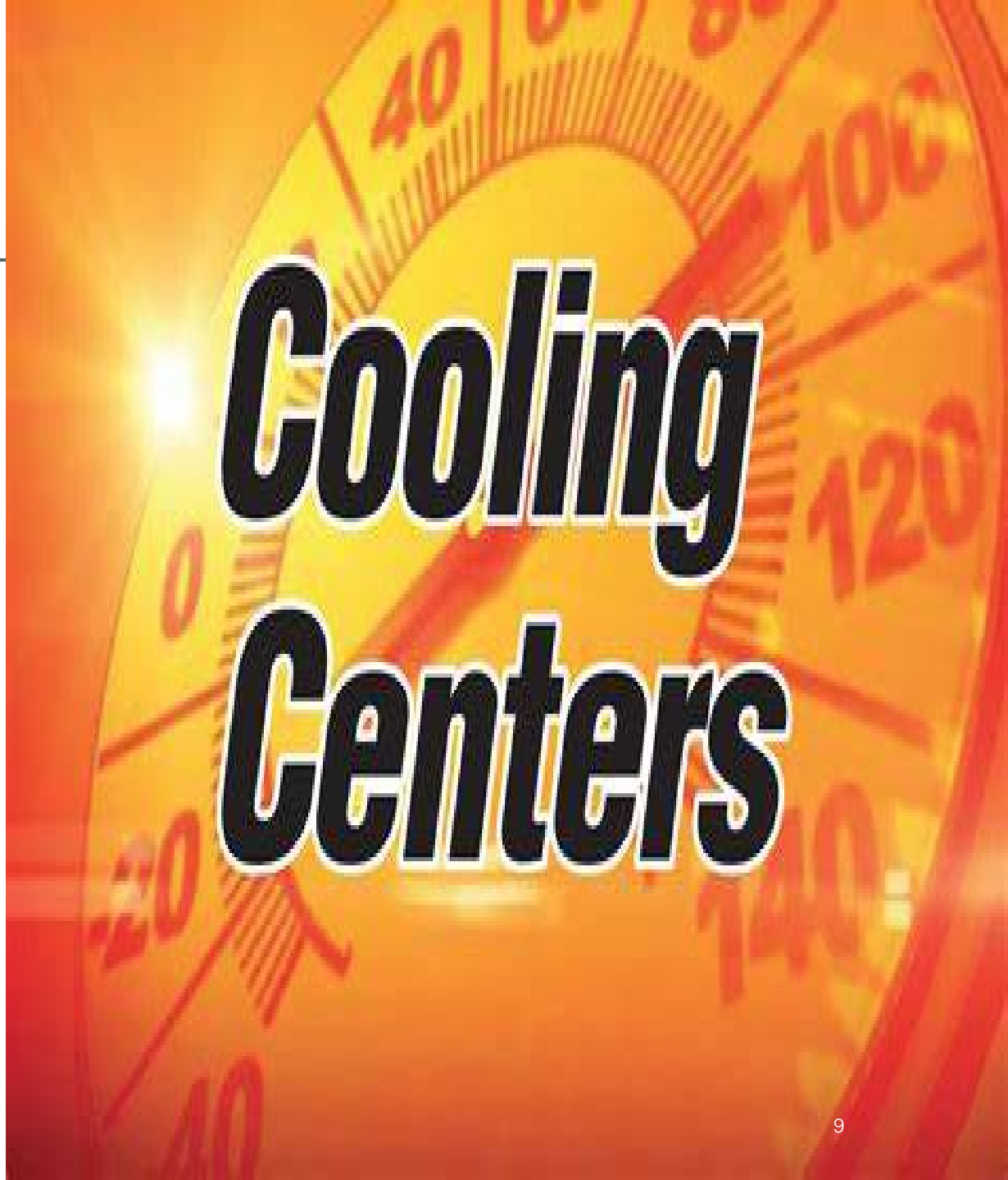
Cooling and warming centers can be established in accessible air-conditioned buildings that are open to the public, such as a library, community center, or senior center. Other places the public can go to alleviate the heat include movie theaters and retail facilities. The following are common characteristics for community cooling and warming centers, which all County operated facilities meet:

- Air-conditioned (cooling and heating)
- Accessible to all members of public
- Compliant with the American Disabilities Act (ADA)
- Have access to restrooms and water
- Have seating available for all guests
- Widely advertised throughout the community
- Close to public transportation routes

When considering opening a cooling or warming center, it is important to take into consideration the location(s) of particularly high-risk populations and the ability of the community to access cooling centers.

General Considerations:

- ✓ • Provide signage at the facility indicating that it is operating as a cooling or warming center.
- ✓ • Provide information, instructions, or signage, at the center in multiple languages (including graphics) in commonly used areas.
- ✓ • Distribute center locations and hours widely to the public through various media and in multiple languages.
- ✓ • Ensure that centers are open and available to all population groups, including unhoused individuals, LGBTQ+ community and immigrants.
- ✓ • Immigration documentation should never be requested or discussed in connection with center services, and it should be made clear that all are welcome.
- ✓ • Identify local resources and subject matter experts to train center staff to identify and address any behavioral health needs that may arise in the cooling or warming center.



Cooling Centers

General Considerations:

- ✓ • Train center staff on safety and security procedures specific to the location being used as a center.
- ✓ • For more extreme weather events—particularly those during which temperatures remain elevated or drop below freezing overnight—consider extended center hours.
- ✓ • Train center staff to recognize the signs and symptoms of heat-related illness and hypothermia.
- ✓ • Work with transit agencies to provide transportation to centers for high-risk populations.
- ✓ • Increase the attractiveness of centers by providing educational and entertainment programming (research indicates that barriers to accessing centers include people worrying that they will have nothing to do).
- ✓ • If feasible with the space available, provide a separate area for families with children.

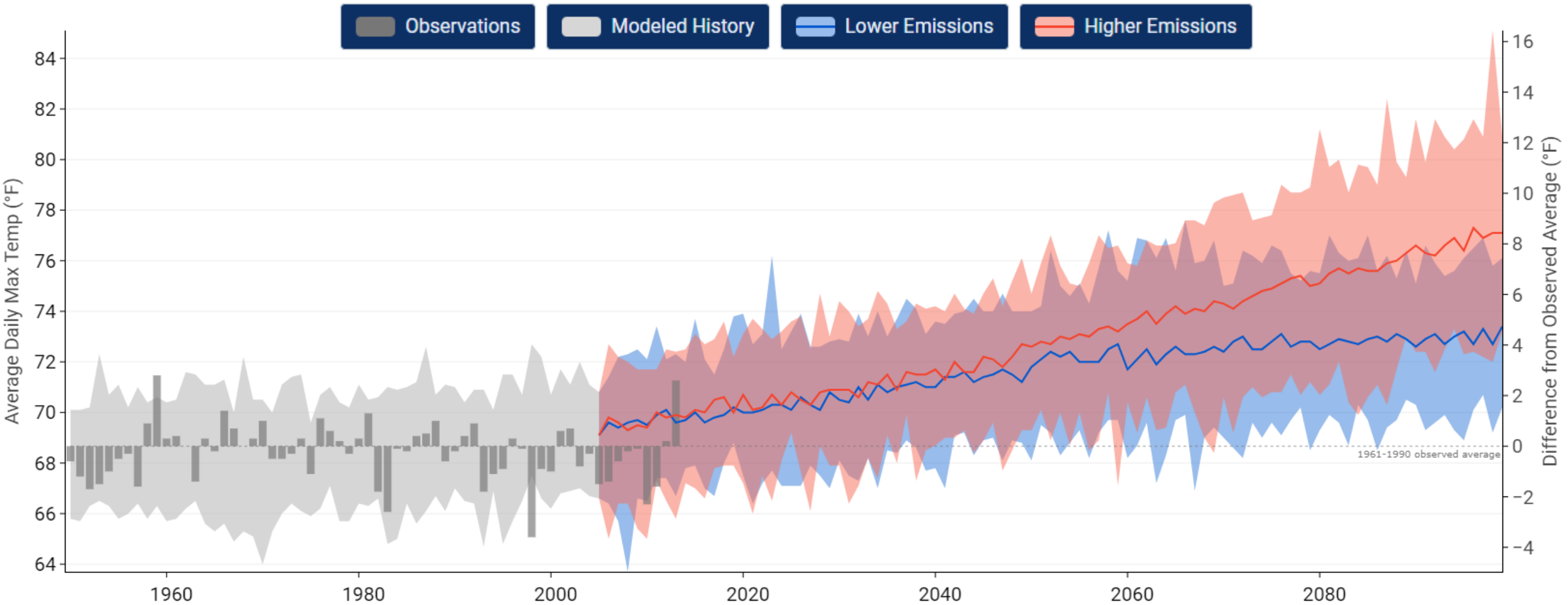


WARMING CENTERS

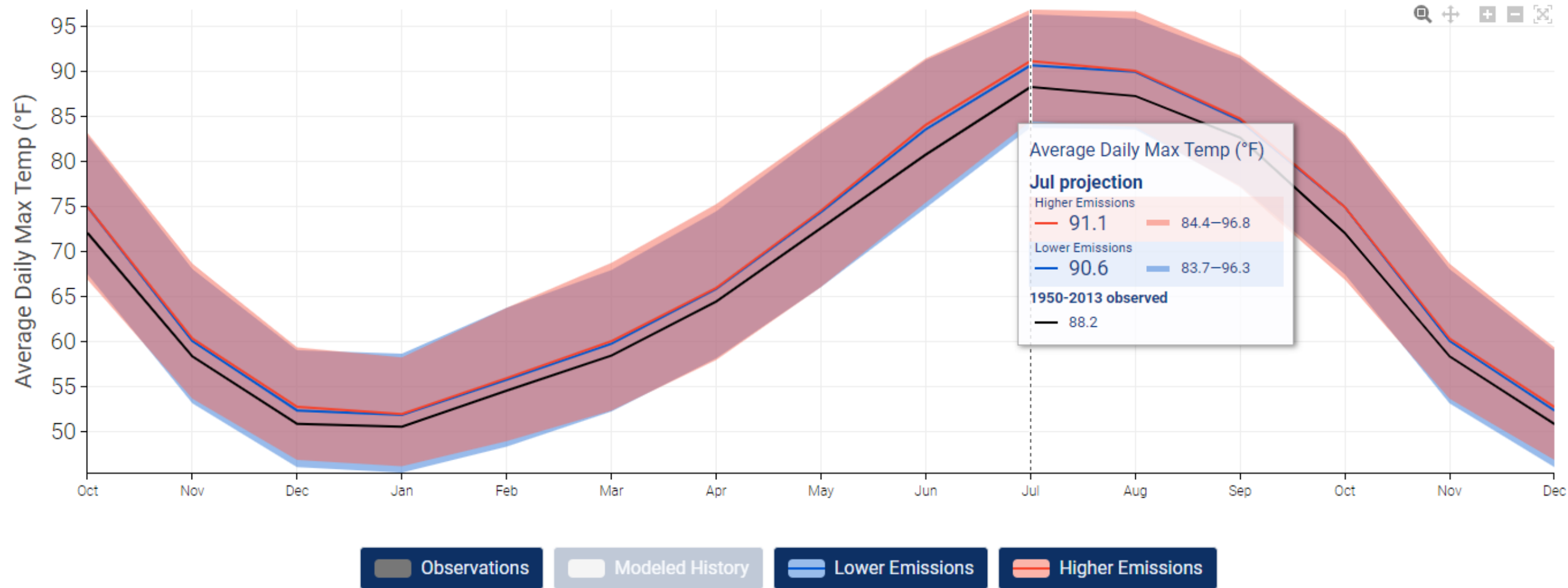
A woman with blonde hair is sitting in a blue armchair in a library, reading a book. She is wearing a checkered jacket and white boots. The library has wooden bookshelves filled with books, a large window with a view of trees, and a green lamp hanging from the ceiling. The floor is made of wood in a herringbone pattern.

County of Lake Options/Barriers/Trends

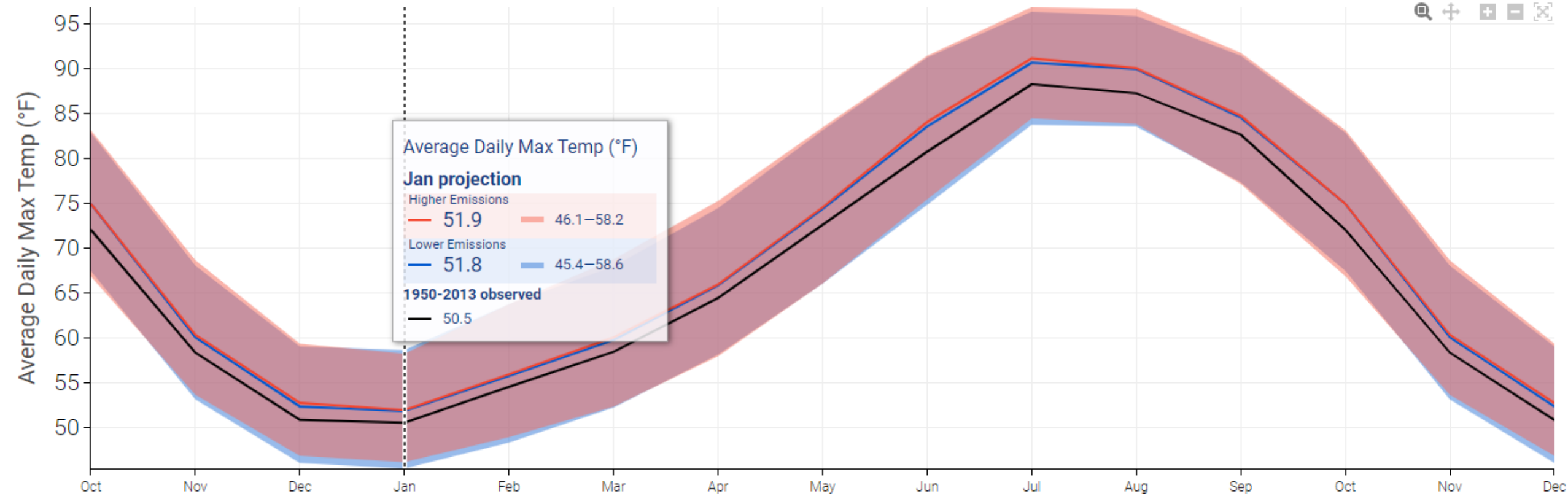
Average Daily Maximum Temperature Projections for Lake County



Average Daily Maximum Temperature Projections for Lake County



Days with Minimum Temperatures Below 32F in Lake County



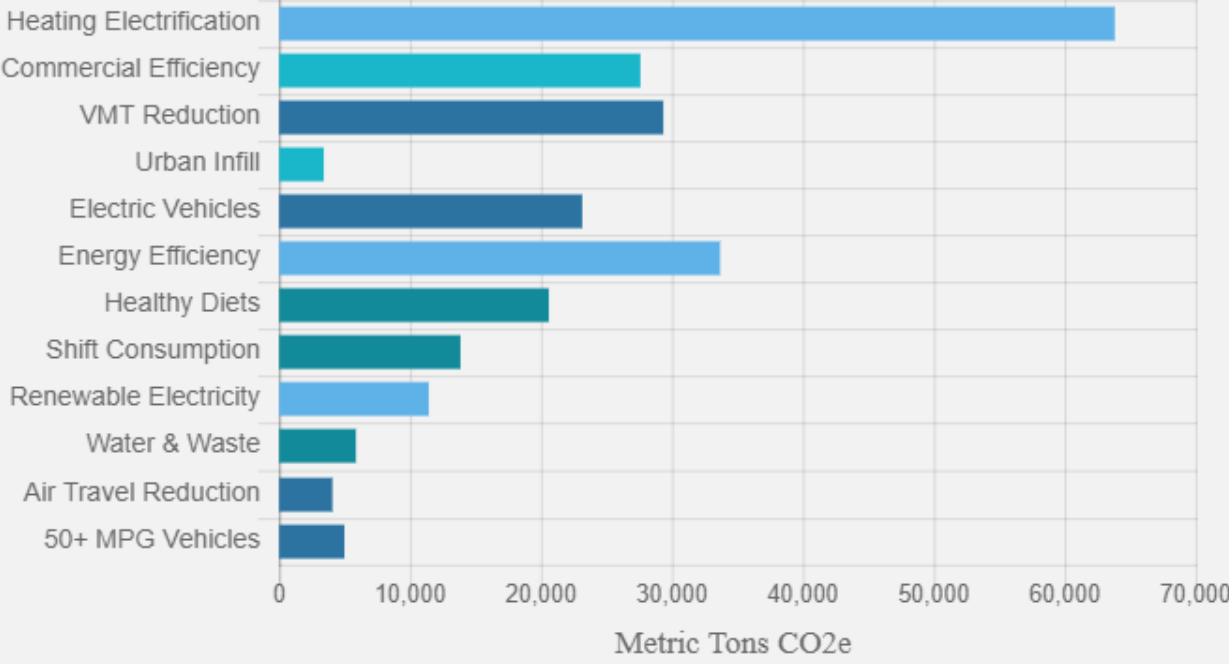
California Local Government Climate Policy Tool

Enter State, County, City, Zip Code, or BlockGroup

Location 1 LAKE

SEARCH LOCATION

GHG Reduction Potential in 2030 from Local Policies



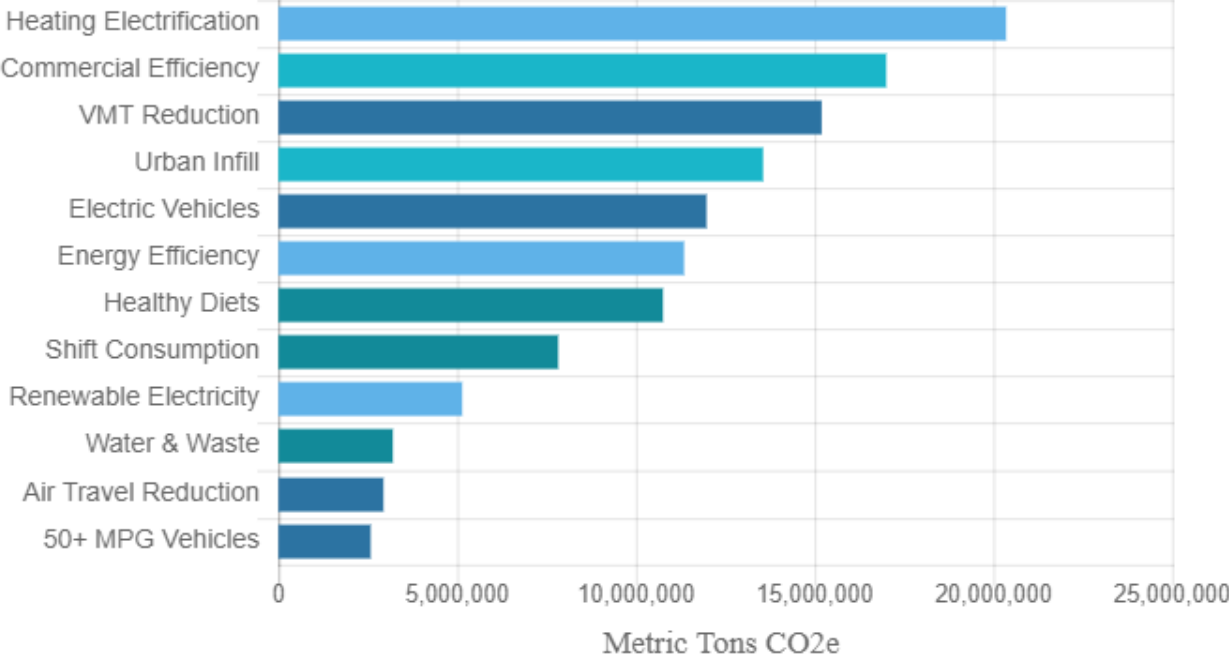
California Local Government Climate Policy Tool

Enter State, County, City, Zip Code, or BlockGroup

Location 2 CALIFORNIA

SEARCH LOCATION

GHG Reduction Potential in 2030 from Local Policies



Current County-Operated Center Options and Hours of Operation:

La Voz de la Esperanza Centro Latino

14092 Lakeshore Drive Clearlake
Monday - Friday, 8:30am - 4:30pm

Big Oak Peer Support Center

13300 East Highway 20, Suite O Clearlake Oaks
Monday - Friday, 8:30am - 4:30pm

Circle of Native Minds Cultural Center

525 North Main Street Lakeport
Monday - Friday, 8:30am - 4:30pm

The Harbor on Main

154 South Main Street Lakeport
Monday - Friday, 8:30am - 4:30pm

Lake County Library

1425 N High Street Lakeport
Tuesday; Thursday through Saturday, 10 am to 5 pm
Wednesday, 10 am to 7 pm

Middletown Library

21256 Washington Street, Middletown
Tuesday through Saturday, 10 am to 5 pm

Redbud Library

14785 Burns Valley Rd, Clearlake
Tuesday; Thursday through Saturday, 10 am to 5 pm
Wednesday, 10 am to 7 pm

Upper Lake Library

310 Second Street, Upper Lake
Tuesday through Friday, Noon to 5 pm
Saturday, 10 am to 3 pm

The above are leased facilities which limits the ability to upgrade buildings (solar, battery, HVAC, etc)

Other Possible County-Operated or Owned Facilities

Russell Rustici Park Meeting Hall
16375 Second St, Lower Lake

Lower Lake Town Hall
16195 Main St, Lower Lake

Nice Clubhouse
3000 Lakeshore Blvd, Nice

Spring Valley Community Center
3005 Wolf Creek Drive, Clearlake
Oaks

Upper Lake Senior Activity Center
9470 Mendenhall, Upper Lake

Kelseyville Senior Center
5245 Third St, Kelseyville

Live Oak Senior Center
12502 Foothill Blvd, Clearlake Oaks

Middletown Senior Center
21256 Washington St, Middletown

- No County staffing at these facilities
- Some lack air adequate air conditioning/heating
- Most have no electrical back-up (generators)
- Separate organization operates and/or leases facility
- Most do not have HEPA filtration

July 1-13 2024 Heatwave

In addition to County Libraries and Peer Support Centers, Non-Governmental Organizations (NGOs) opened Cooling Centers for the first time July 1 – 6, 2024, but like the County, did not offer cooling center options July 7-13.

- Lakeport Senior Center (2)
- Galilee Lutheran Church (0)
- Lucerne Alpine Senior Center (9)
- United Christian Parish (0)
- Cobb Mountain Lions Club (0)
- Highlands Senior Center (N/A)
- Kelseyville Presbyterian Church (1)

County Department Barriers/Funding Needs & Requests

Staffing Needs

- Overtime pay for current onsite staff to extend hours and duties
- Funding for additional staff onsite
- Additional funds for facilities, IT, and Public Services (Janitorial) and Administration Fee (10%, which supports management, HR, payroll, etc)
- If at least one medical professional staff and one law enforcement officer at each site when acting as a center is needed, would need to be budgetd for

Facility Needs

- Additional space to accommodate seating for 80 persons at each site with parking
- Expanded ADA access
- Adequate restrooms with diaper changing stations in all
- Upgraded HVAC, generator, HEPA, drinking water fountains, public wi-fi, and electrical upgrades to accommodate charging stations
- Private Staff break areas, with sinks, chairs, couch, refrigerator, coffee machine, lactation rooms
- Safety supplies (fire extinguishers, first aid kits, smoke alarms, updated building signage)
- Additional facility supplies including restroom, cleaning, and first aid supplies
- Entertainment for the public (computers, televisions, games, books, etc. Nothing to do is the #1 barrier to the public using cooling/warming centers)
- Shelf-stable snacks



Next Steps/Direction

- Continue as is with addition of outdoor signage to notify the public
- Increase budgets for Libraries and Peer Support Centers for additional staffing and resources
- Continue seeking funding opportunities for Community Resilience Center(s) construction
- Other?