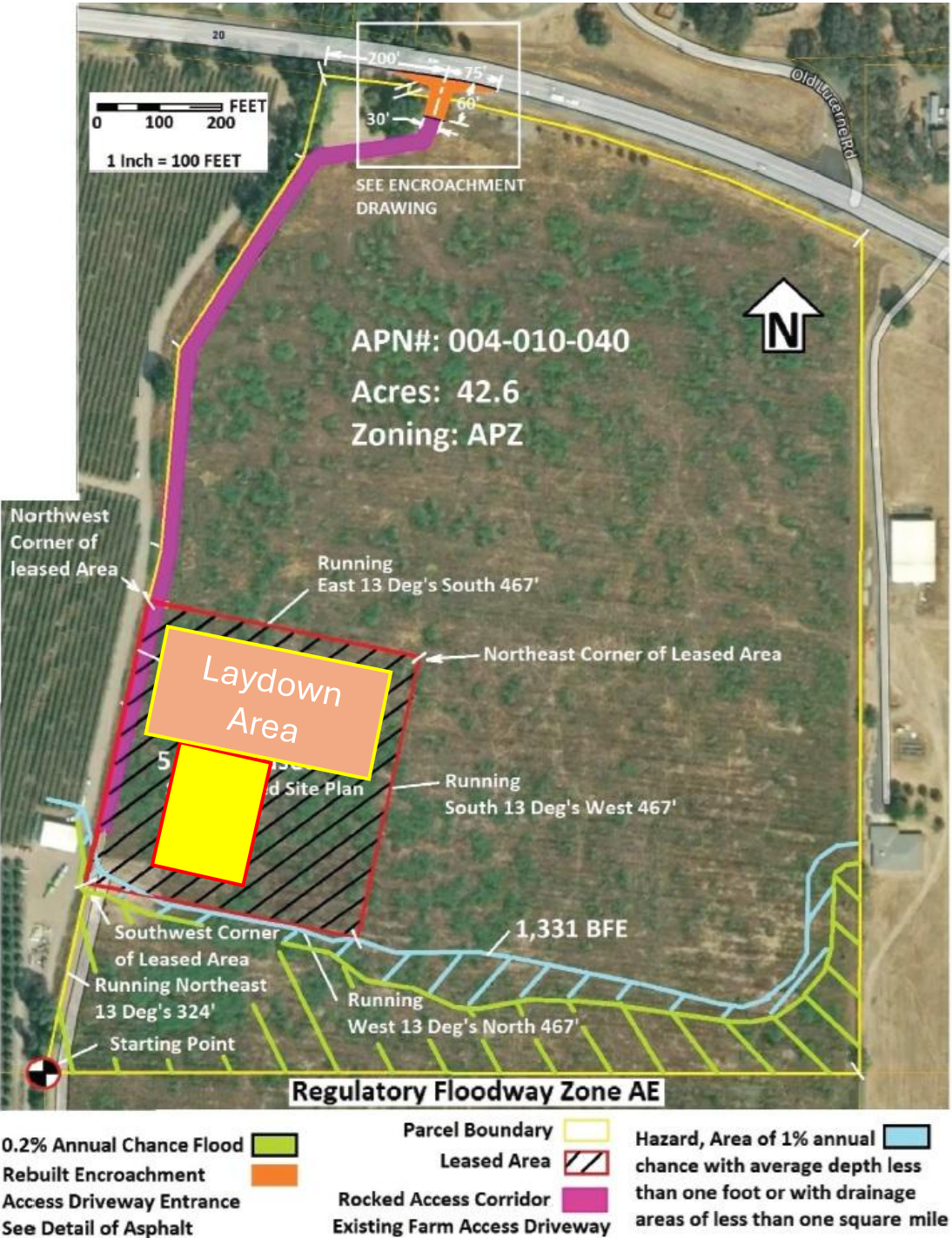
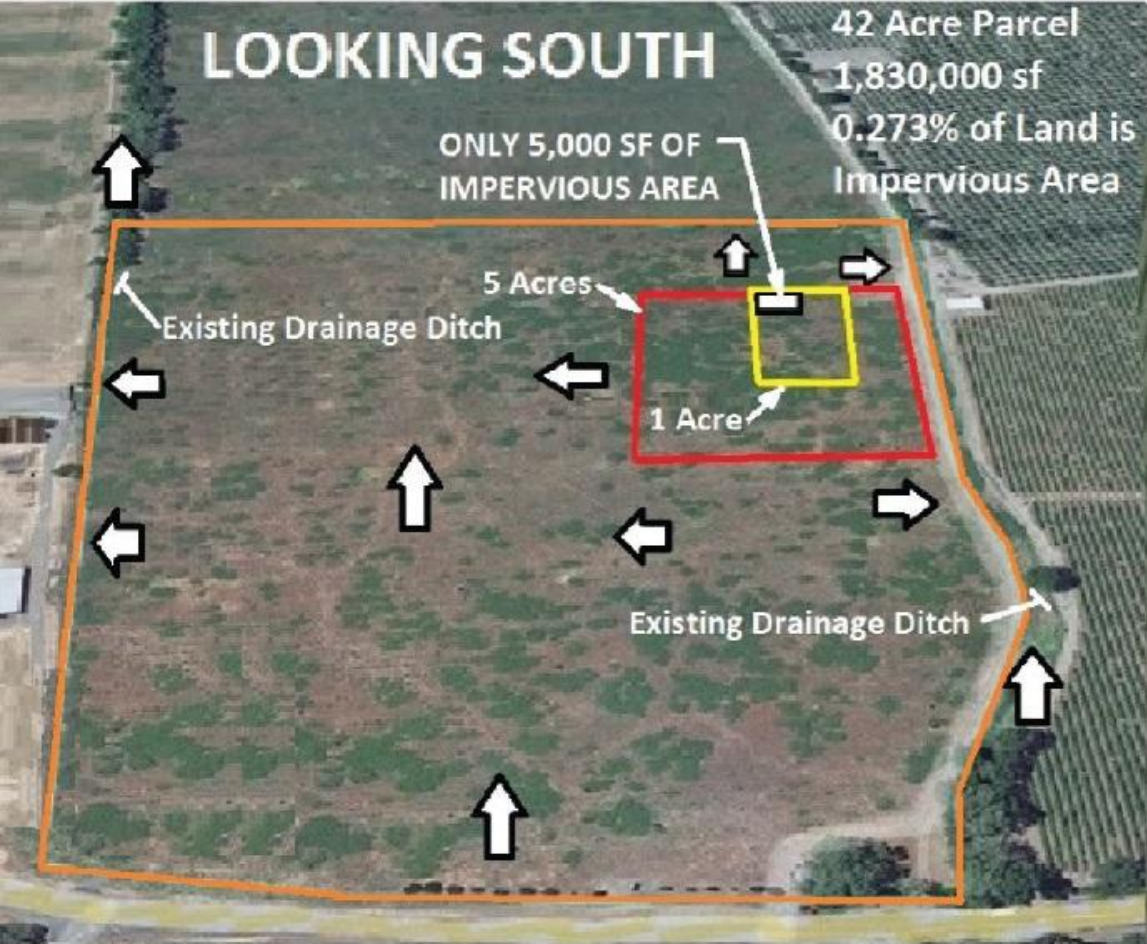


SITE PRESENTATION

UPPER LAKE

WOOD PROCESSING CAMPUS

View of Parcel and Location of Equipment



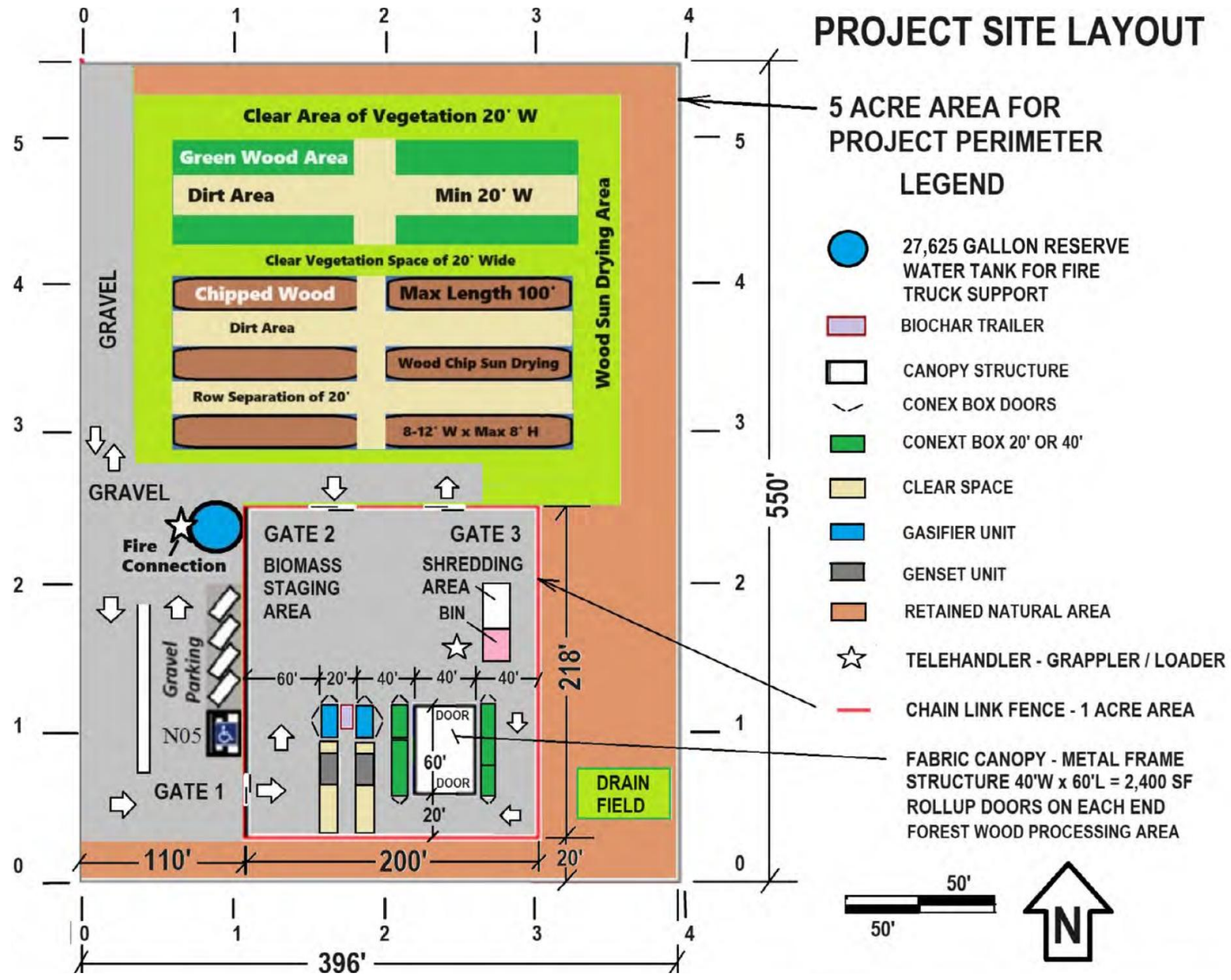
Clover Creek Left Bank (not tied into high ground)



**View of Parcel and
Potential Flood Area
if Levee Breaks with
Location of Project**

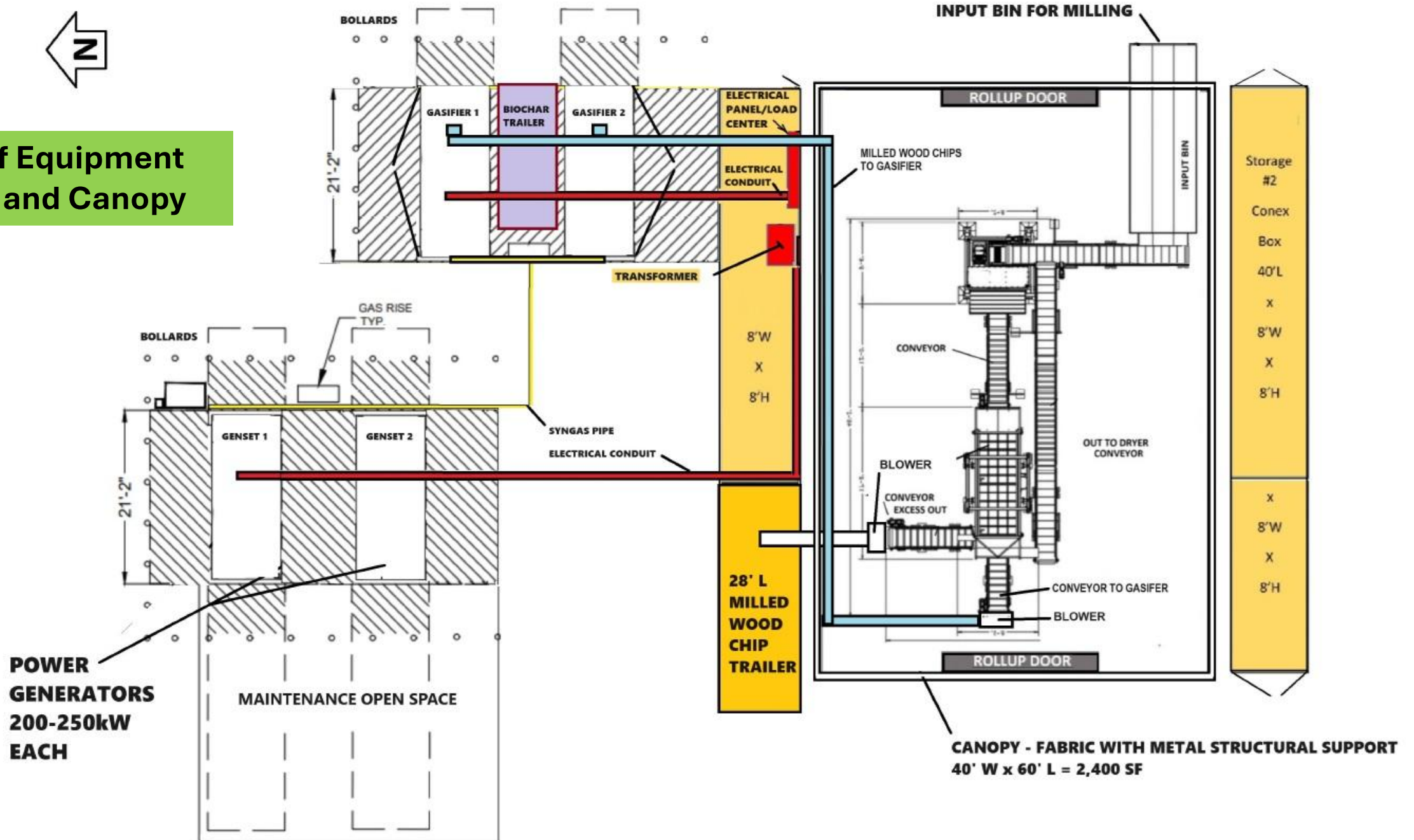
**Project is Located
North of the High-
Water Line**

PROJECT SITE LAYOUT





View of Equipment Sitting and Canopy



Looking South from Location of Equipment





TYPICAL VIEW OF SYSTEM LAYOUT

ES10 – 40' Wide – 23' High



ES10-406023-PDM

Looking South at Location of Equipment



Looking North from Location of Equipment







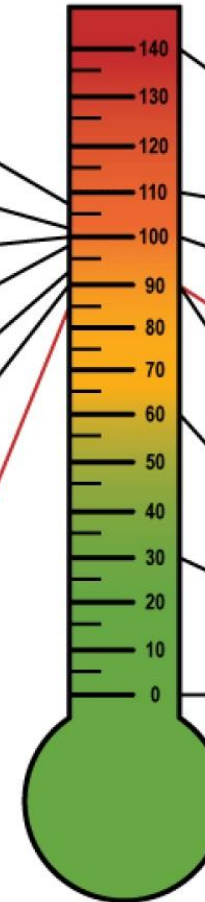
Job Site Sound Levels (dBA)

- Grader, scraper (107)
- Jackhammer (102)
- Bulldozer (100)
- Concrete Saw (98)
- Forklift (93)
- Belt Sander (90)

OSHA recommends that employees not be exposed to noise levels greater than 85 dBA

Everyday Sound Levels (dBA)

- Jet engine at takeoff, gunshot (140)
- Chain Saw (110)
- Wood Shop (100)
- Power lawn mower at operator's ear (90)
- Normal Conversation (60)
- Whispered Voice (30)
- Threshold of unimpaired hearing (0)



PROCESS COMPLETED
- BIOCHAR PRODUCED -

