
DEPARTMENT
OF
PUBLIC WORKS



2026
TRANSPORTATION PLAN
PAVEMENT PRESERVATION &
CAPITAL PROJECTS



STAFFING & EQUIPMENT

Road Department

- Crew of 34
- Additional 6 road workers to be added Summer 2026
- 3 Road Area Yards (Lower Lake, Upper Lake, and Kelseyville)
- Traffic Control & Vegetation Management
- Central Garage

Engineering & CIP

- Deputy Director (1)
- Associate Engineer (1)
- Capital Project Manager (3)
- Assistant Engineers (2)
- Engineering Technicians (2)

Equipment

- Chip Spreader
- Paver
- Rollers (2)
- Graders (2)
- Sweeper (3)
- Ten-wheel dump trucks (7)



COUNTY MAINTAINED ROAD NETWORK

- 615 miles of roads that include 124 bridges, 3,555 culverts, and numerous drainage structures
- 464 paved miles; 151 unpaved miles

SUPERVISORAL DISTRICT SUMMARY							
District	Road Miles			Number of Roads			
	Paved	Unpaved	Total	Paved	Unpaved	Both	Total
District 1	116.53	32.96	149.49	215	9	7	231
District 2	0.48	0	0.48	2	0	0	2
District 3	115.64	104.44	220.08	266	19	5	290
District 4	57.15	6.99	64.14	58	1	1	60
District 5	153.46	27.96	181.42	335	10	5	350
Total	443.26	172.35	615.61	876	39	18	933

ROAD CONDITION

Pavement Condition Index (PCI): a measurement of pavement grade or condition that ranges from zero (worst) to 100 (best).

Very Poor	Poor	Marginal	Fair	Good	Very Good	Excellent
0-29	30-39	40-49	50-59	60-69	70-84	85-100

AVERAGE PCI						
District	1	2	3	4	5	County Wide
PCI	37.55	13.5	29.12	40.08	36.15	34*

* PCI information from the 2022 Pavement Management Plan
 PMP update anticipated in 2027

HOW ROAD PRESERVATION PROJECTS ARE PRIORITIZED

Road Condition

- PCI (Pavement Condition Index)
- Type of Stress/Failure

Functional Class

- Road type/purpose
- Arterials, Major/Minor Collectors, Local Roads

Average Daily Traffic

- Road usage

Pavement Management Plan

- Data-driven plan for cost-effective road maintenance
- “Right Treatment at the Right Time”

Geography

- Mobilization, Logistics, Communities
-

FUNDING SOURCES

SBI: California Senate Bill 1 (Road Repair and Accountability Act of 2017)

- County apportionment: 75% maintained road mileage / 25% registered vehicles

HUTA: Highway Users Tax Account

- County apportionment: 75% registered vehicles / 25% maintained road mileage

Property Tax

- Approximately 1-cent of every property tax dollar

RSTP: Regional Surface Transportation Program

- Federal gas tax dollars for roads, transit, and transportation needs

Construction & Refuse Vehicle Road Impact Fee

- Federal gas tax dollars for roads, transit, and transportation needs

Grants and Programs

- Competitive Funding opportunities vary
-

HOW IT'S SPENT

Routine Operations and Administration

HUTA, RSTP/Exchange, Property Taxes

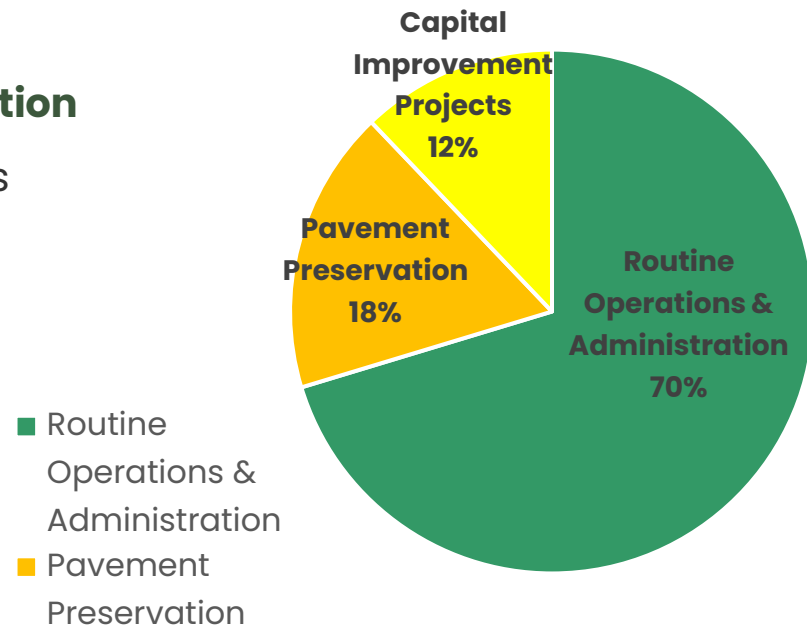
Pavement Preservation Projects

SBI

Capital Improvement Projects

SBI

Expenditures



2026 TRANSPORTATION PROJECTS



2026 PROJECTS – COUNTY ROAD CREW

2026 Pavement Preservation Project

- 32 miles, North Lakeport / Nice Area
- CSA chipseal (3 miles over 9 CSAs)

Short Span Bridge Rehabilitation

- Highland Springs Bridge 14C-0202 (construction completed April 2026)
- Fritch Bridge 14C-0244 (construction completed May 2026)
- Kelsey Creek Bridge 14C-0232 (construction scheduled August 2026)

Road Repair

- Localized Storm Damage Repairs
-

2026 PROJECTS – CONTRACTED CAPITAL IMPROVEMENT PROJECTS

Konocti Road Sidewalks

- New sidewalks
- Funding: Federal Safe Routes to School, SBI

Hill Road Landslide Repair

- Landslide repair & retaining wall
- Funding: FHWA Emergency Relief

South Main Street & Soda Bay Road

- Utilities undergrounding & road improvements
- Funding: State STIP, Local Utilities, General Fund

Lampson Field East Apron Rehabilitation

- Rehabilitate parking apron
- Funding: FAA

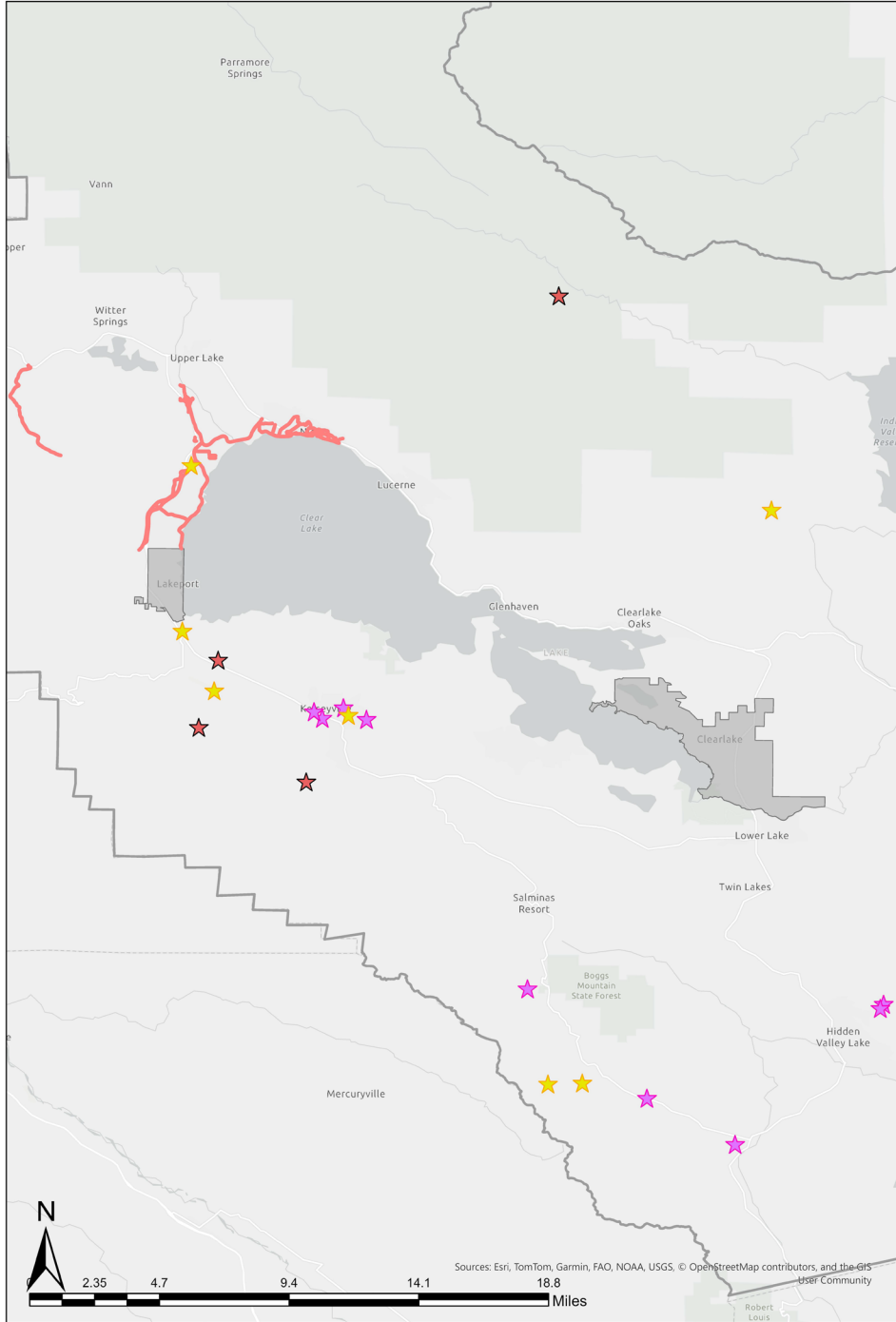
Upper Wolf Creek Bridge Replacement

- Bridge Replacement
- Funding: Highway Bridge Program

Socrates Mine Road Landslide Repairs

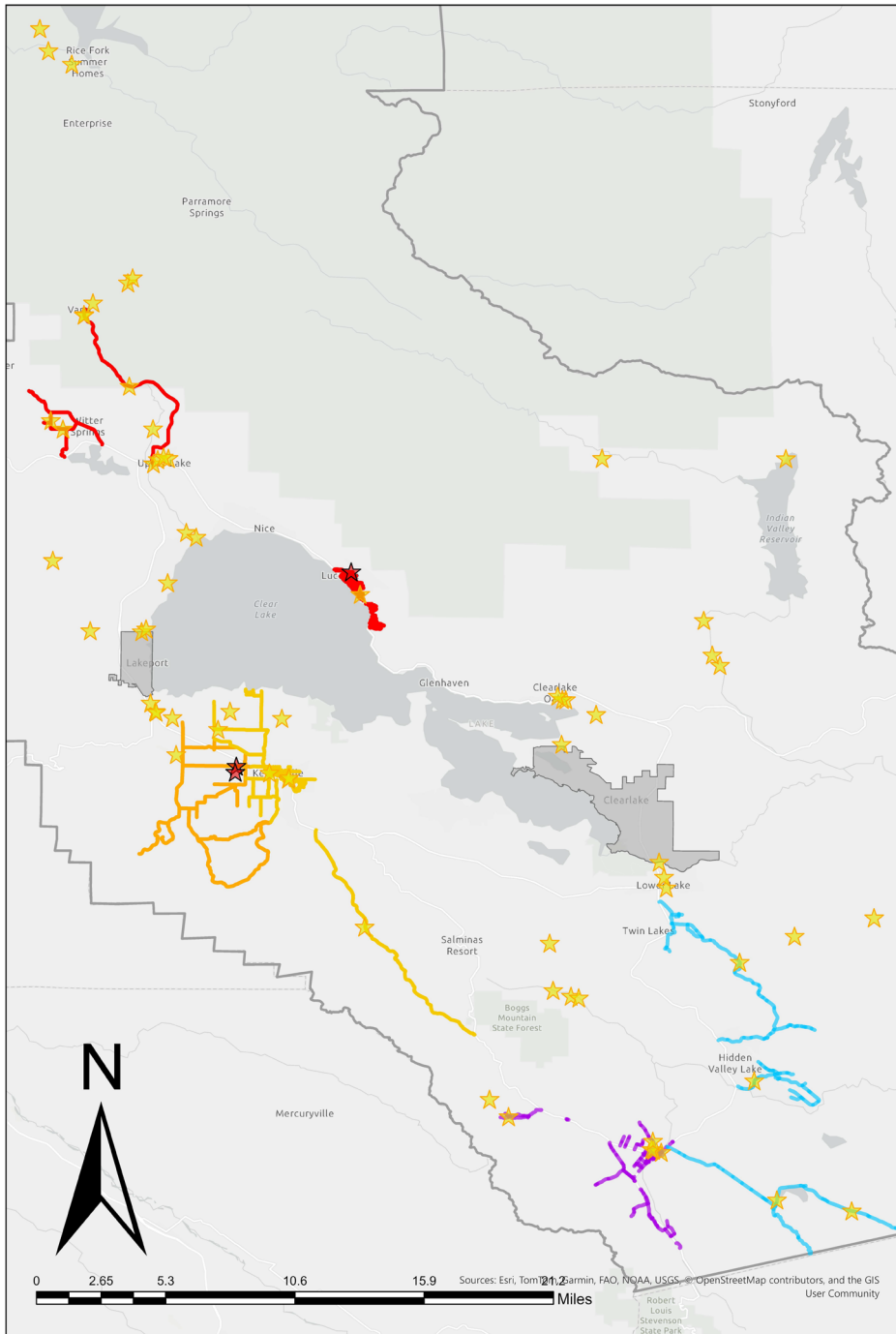
- Landslide repairs at PM 1.0 & PM 2.4
 - Funding: Geothermal
-

2026 COUNTY ROAD CREW & CAPITAL IMPROVEMENT PROJECTS



- Chip Seal-32.38 Miles
- ★ 2026 CSA
- ★ Road Crew Project
- ★ CIP Projects
- City Poly
- County Boundary

2027-2031 TRANSPORTATION IMPROVEMENT PLAN



- 2027 Chip Seal (36.91 Miles)
- 2028 Chip Seal (32.91 Miles)
- 2029 Chip Seal (29.3 Miles)
- 2030 Chip Seal (30.03 Miles)
- 2031 Chip Seal (34.24 Miles)

- ★ Road Crew Project
- ★ CIP Project
- City Poly
- County Boundary

QUESTIONS

