

BOARD OF SUPERVISORS, COUNTY OF LAKE, STATE OF CALIFORNIA

RESOLUTION NO.

RESOLUTION DEDICATING HERNDON PIONEER CEMETERY AS PIONEER MEMORIAL
PARK

WHEREAS, the Herndon Pioneer Cemetery, also known as the Lower Lake Pioneer Cemetery, and, sometimes, Copsey Creek Cemetery, was established in 1856, and became the final resting place of many early Lake County settlers; and

WHEREAS, the Board of Supervisors of the County of Lake has determined that the legal status of the Lower Lake Pioneer Cemetery represents a threat to the spiritual and aesthetic welfare of the public; and

WHEREAS, the Board of Supervisors of the County of Lake approved Resolution 2006-116 on the 11th of July 2006, abandoning the Lower Lake Cemetery as a place of future interment so that it may be dedicated as a pioneer memorial park in accordance with California Health and Safety Code sections 8825-8829; and

WHEREAS, the County of Lake published a notice of declaration of intended abandonment beginning on May 20, 2025 in compliance with Section 6064 of the Government Code; and

WHEREAS, the Board of Supervisors of the County of Lake finds that all necessary and practicable work to remove copings, improvements, and embellishments which have been found to be a threat or danger to the health, safety, comfort, or welfare of the public has been completed; and

WHEREAS, the County surveyed the parcel (attached hereto as Exhibit "A"), and it is now appropriate to adopt a resolution dedicating the cemetery as Pioneer Memorial Park.

NOW, THEREFORE, BE IT RESOLVED the Board of Supervisors of the County of Lake hereby declare the abandonment of Lower Lake Pioneer Cemetery as a place of future interment and dedicate the parcel as Pioneer Memorial Park.

This Resolution is adopted by the Board of Supervisors of the County of Lake on the 17th day of June, 2025, by the following vote:

AYES:

NOES:

ABSENT OR NOT VOTING:

COUNTY OF LAKE

CHAIR, Board of Supervisors

ATTEST:
SUSAN PARKER
Clerk to the Board of Supervisors

By: _____

APPROVED AS TO FORM:
LLOYD GUINTIVANO
County Counsel

By: 
Joseph Wankmueller
Deputy County Counsel

EXHIBIT "A"

Legal Description:


All that Real property situate in the unincorporated area of the County of Lake, State of California, and lying within the Southeast Quarter of Section 2, Township 12 North, Range 7 West, Mount Diablo Base and Meridian more particularly described as follows:

Beginning at a 1/2" iron pipe with no tag, marking the Northwest corner of Lot 105 as shown on that Map, titled "Map of Copsey Creek Ranch Unit Two", recorded September 26, 1966 and filed in Book 9 of Town Maps, at Pages 59-62, Lake County Records; thence from said **Point of Beginning**, and along the North line of said Southeast Quarter of said Section 2, South 89°39'20" West, 478.08 feet (*477.79 feet, per Town Map*) to a 1/2" rebar with no tag (*1/2" iron pipe, per Town Map*), marking the Northeast corner of Lot 237 of said Town Map; thence along the exterior boundaries of said Town Map, the following course and distances: South 05°12'41" East (*South 5°02'50" East, per Town Map*), 280.57, to the corner common to Lots 239 and 240; thence North 88°56'17" East, 481.59 feet (*North 88°51'50" East, 482.19 feet, per Town Map*) to a 1/2" iron pipe tagged "LS 2757" marking the Northeast corner of Lot 272 of said Town Map; thence North 06°02'20" West, 274.88 feet (*North 6°04'00" West, 274.33 feet per Town Map*) to the **Point of Beginning**.

Excepting therefrom any portion of the hereinabove described land that lies within the Northeast Quarter of Section 2 of Township 12 North, Range 7 West, Mount Diablo Base and Meridian.

Containing 3.05± Acres

APN 012-039-06

Prepared by 
W. Vance Ricks, PLS 8594,
Dated: April 14, 2025

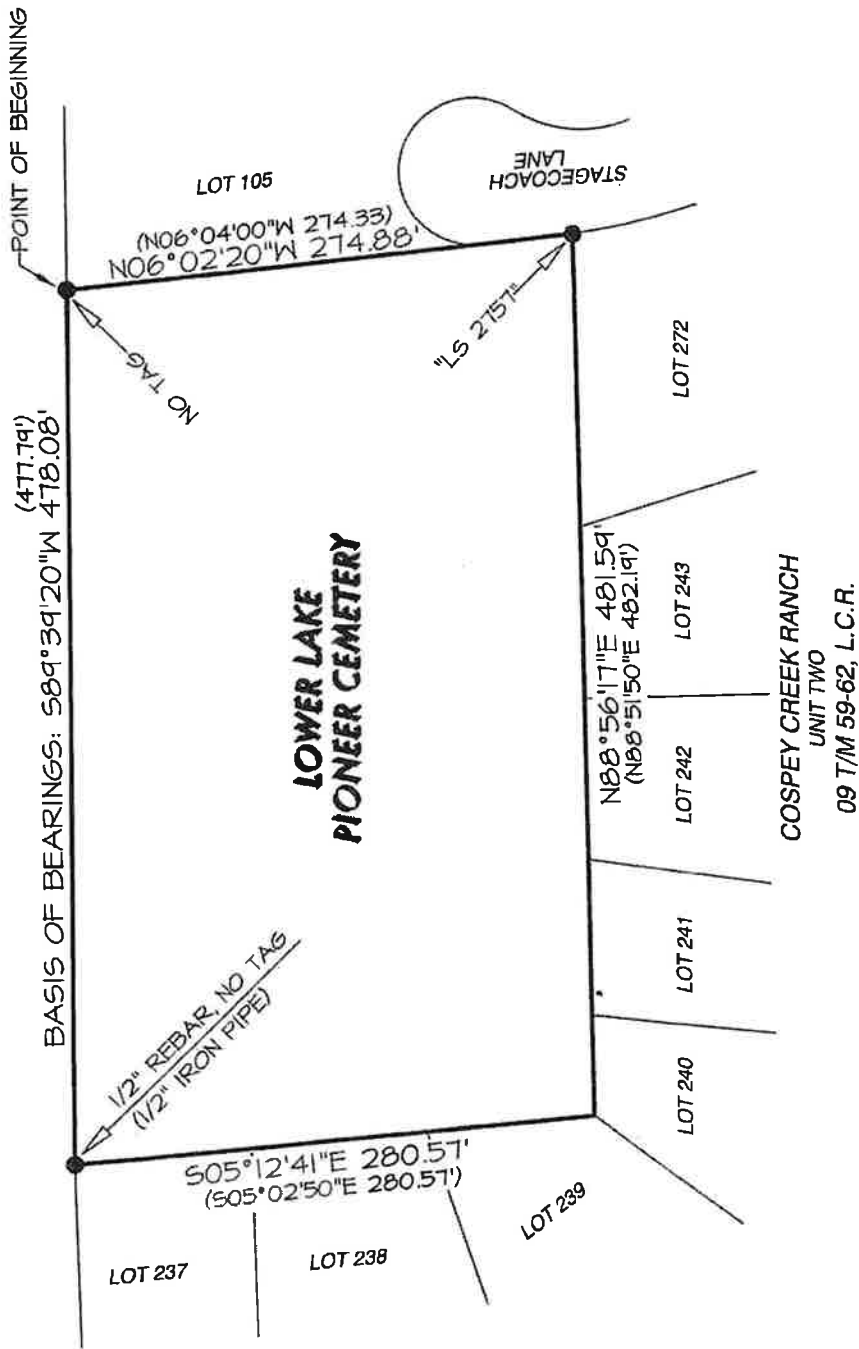
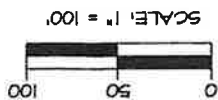


SKETCH TO ACCOMPANY EXHIBIT "A"

THIS EXHIBIT HAS BEEN PREPARED FOR GRAPHICAL PURPOSES ONLY. ANY ERRORS OR OMISSIONS CONTAINED ON THIS EXHIBIT SHALL NOT AFFECT THE DESCRIPTION CONTAINED ON EXHIBIT "A"

LYING WITHIN THE SOUTHEAST QUARTER OF SECTION 2,

TOWNSHIP 12 NORTH, RANGE 7 WEST, MOUNT DIABLO BASE & MERIDIAN



LEGEND

- 1/2" IRON PIPE, UNLESS OTHERWISE SHOWN
- (N88°51'50"E 482.19') RECORD DATA PER 09 T/M 59-62, L.C.R.
- L.C.R. LAKE COUNTY RECORDS
- T/M BOOK OF TOWN MAPS, L.C.R.



04/17/2025