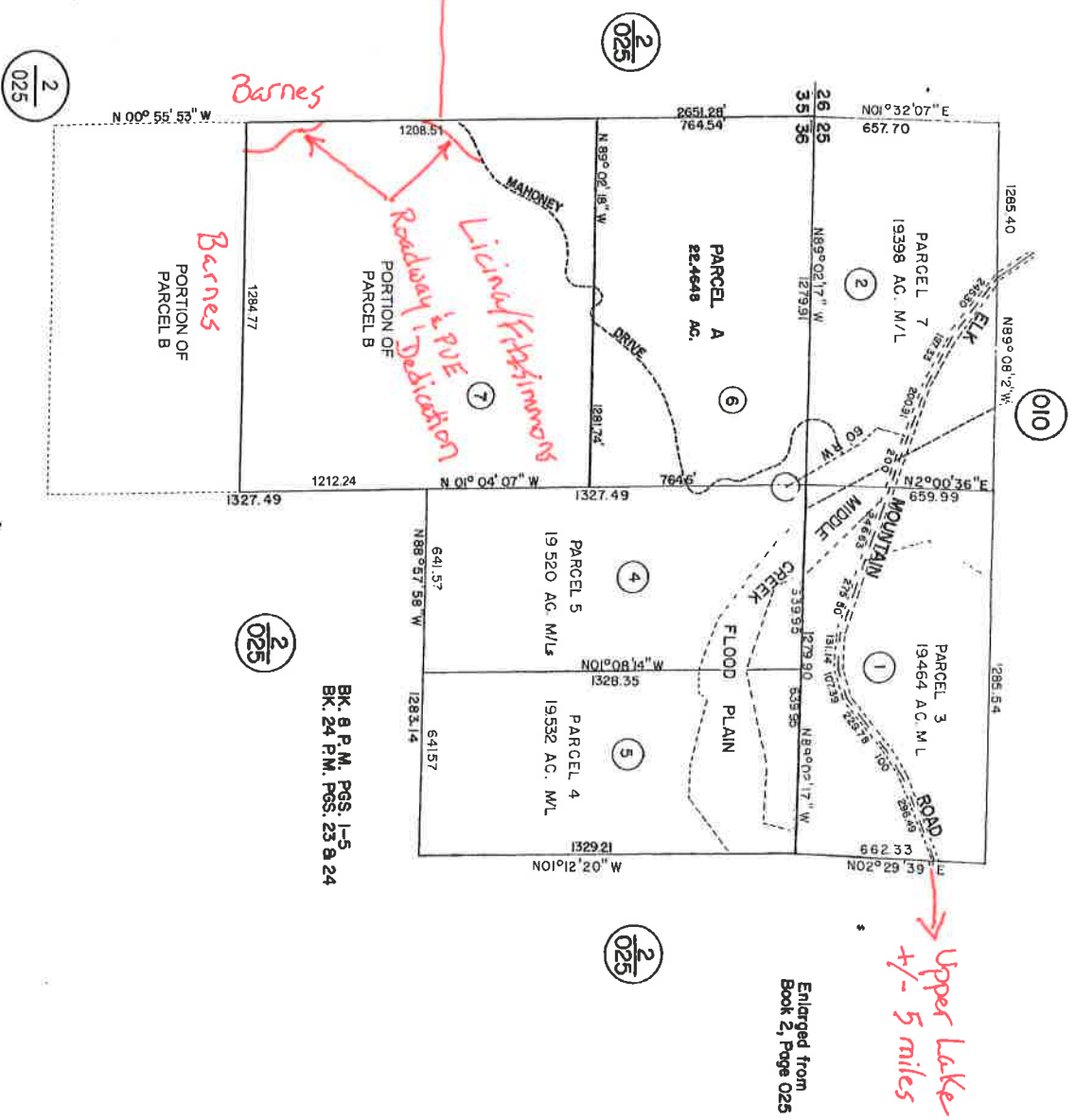


A PORTION OF SECTIONS 25 & 36, T. 16 N., R. 10 W.

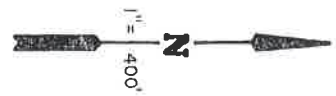
T. R. A.
68-008

22-011



BK. 8 P.M. PGS. 1-5
BK. 24 P.M. PGS. 23 & 24

Enlarged from
Book 2, Page 025



RECORDED
11 OCT
5 10 PM
DATA

Register of Deeds
Linn County