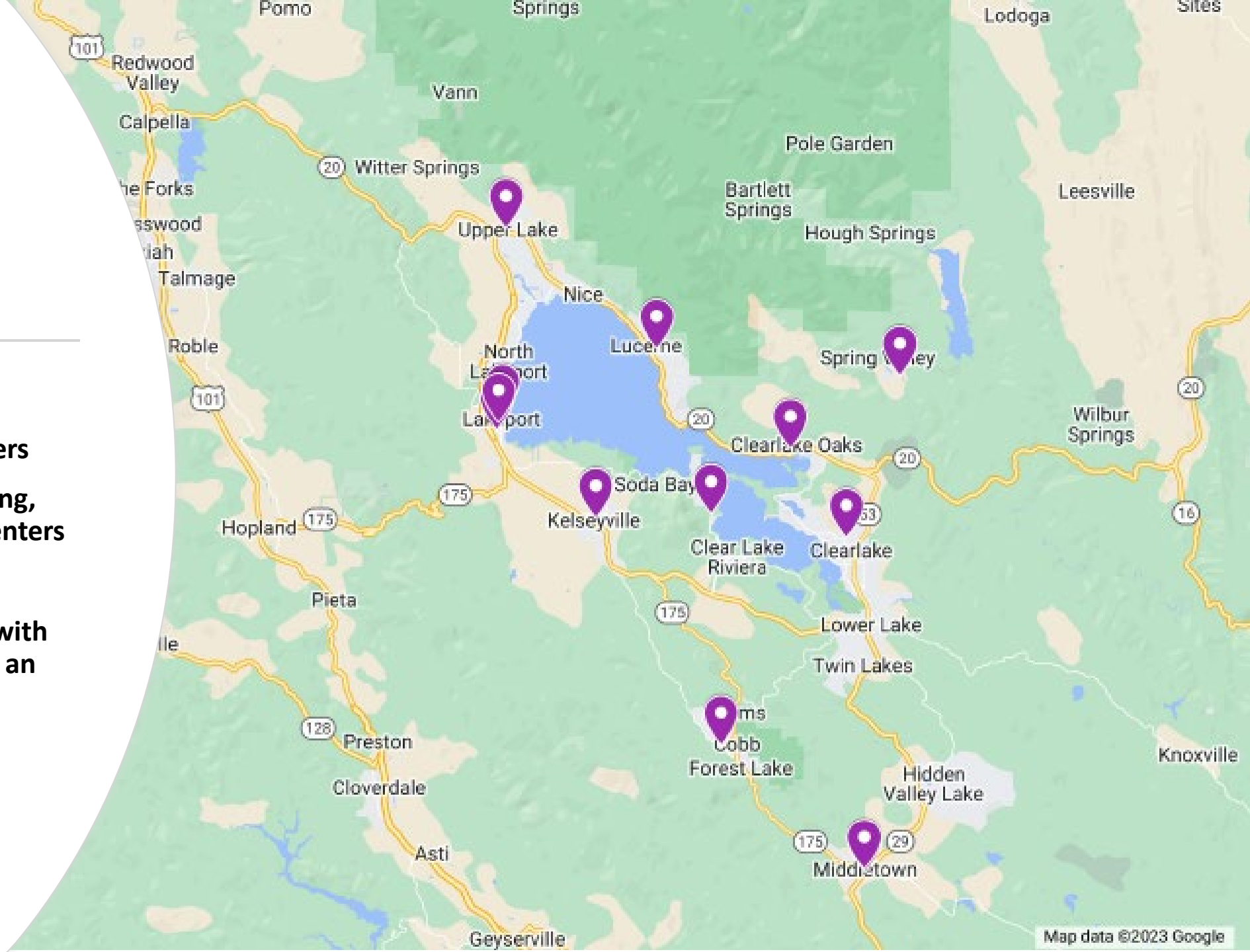


- **Lake County**
- **Community Resilience Centers**
 - **Neighborhood-level cooling, warming, and clean air centers**
- **Long Term Project**
 - **New stand-alone facility with services that can serve as an evacuation shelter**





Tuolumne County Community Resilience Centers



CRC Project- Background

- As a result of the Rim Fire 2013, Tuolumne County was eligible to apply for the National Disaster Resilience Competition Grant (NDRC)
- Tuolumne County teamed up with the State of California (Governor's Office of Planning and Research, Housing and Community Development, Sierra Nevada Conservancy, CalEPA, and CalFire) and U.S.F.S. to develop and submit a NDRC application in 2015.
- The first step in writing the grant application was to hold several community meetings in Tuolumne County to ask residents what resilience meant to them.
- What we heard was the following:
 - Need for better response/recovery to and from emergencies
 - Need for Healthier Forest
 - Need for a better economy that capitalizes on our natural assets

CRC Project- Background

- After many meetings and a great deal of discussion, the NDRC Team developed what is known as the Community and Watershed Resilience Program for submission as the State's NDRC Grant Application.
- The program consisted of the following three pillars:
 - **Forest and Watershed Health (Lead: SNC/USFS) \$29 million**
 - Bio-mass removal as the result of the Rim Fire
 - Forest Restoration
 - Meadow, Fence and Trough Restoration
 - Fuel Breaks
 - **Biomass Utilization Facility (Lead: SNC) \$22 million**
 - Loans to bring new business/jobs to the county related to biomass. Most likely 2-3 new business will come online as a result of these grant funds.
 - **Community Resilience Center Project (Lead: TC) \$19 million**
 - Construction of at least one Community Resilience Center in the County.
- In 2016, The State of California was awarded \$70 million for the Community and Watershed Resilience Program. Since this time, the NDRC Team has been working to accomplish the required tasks in each of the three pillars.

CRC Project- Initial Steps

- Building on what we heard from the community during the NDRC Grant application, staff then went back out to the community to talk further about what Resiliency looked like for us.
- We asked the community the following questions:
 - What are goals do we want to achieve with these CRC buildings
 - What programs, services, activities should be provided in our CRC
 - What spaces and outside amenities should be included
 - Where should a CRC be located (There were some grant restrictions on this item)
- It was vital to get community input on these questions. This was a community building and for it to be successful, supported and sustainable, we needed a building that fit the community needs.

CRC Project- Initiated

- The initial steps in creating our CRC building including the following:
 - Created a robust community engagement plan with an Advisory Committee, Community Stakeholder Committee and Operational Stakeholder Committee
 - Held several public meetings with these various committees and the community to get their input on what features and services should be included in a CRC building.
 - Worked with Lionakis Architects to put together a Programming Document
 - Formed partnerships with various organizations in the Community
 - Solicited and purchased property for two CRC Facilities
 - Conducted required environmental studies
 - Developed facility construction plans and specifications for the two CRCs

CRC Project- Goals

- It was through Information gathered from the various committees and the public in the Programming Meetings, that the goals of the CRC facilities were developed
- The goal of each facility is:

Groveland

- Groveland citizens were looking for a CRC Facility more geared towards seniors. Creating a hub for providing a variety of services and hosting events. They wanted a facility in which the community could come together to work and play.

Goal: To create a facility to foster social cohesion and community resiliency.

Tuolumne

-Tuolumne citizens were looking for a CRC Facility geared towards youth, learning and providing a catalyst for increased economic development. It was important to locate this center close to the downtown area for ease of access and to re-energize the downtown economy.

Goal: To create a facility that fosters economic revitalization and economic resiliency.

CRC Project- Committee Structure

- The goals of the organizational structure for the CRC project were to:
 - Create a structure that is efficient and inclusive
 - Ensure all segments of the community are represented and provided the opportunity to have a voice in the process
 - Complete the tasks on time and within the allocate budget
- **Advisory Committee**
 - Provides high level oversight and guidance to the project. The committee included a Project Manager along with other key County staff.
- **Community Stakeholder Advisory Committee**
 - It was the responsibility of this group to ensue that services and programs wanted in the community were communicated to the Architect and Advisory Committee.

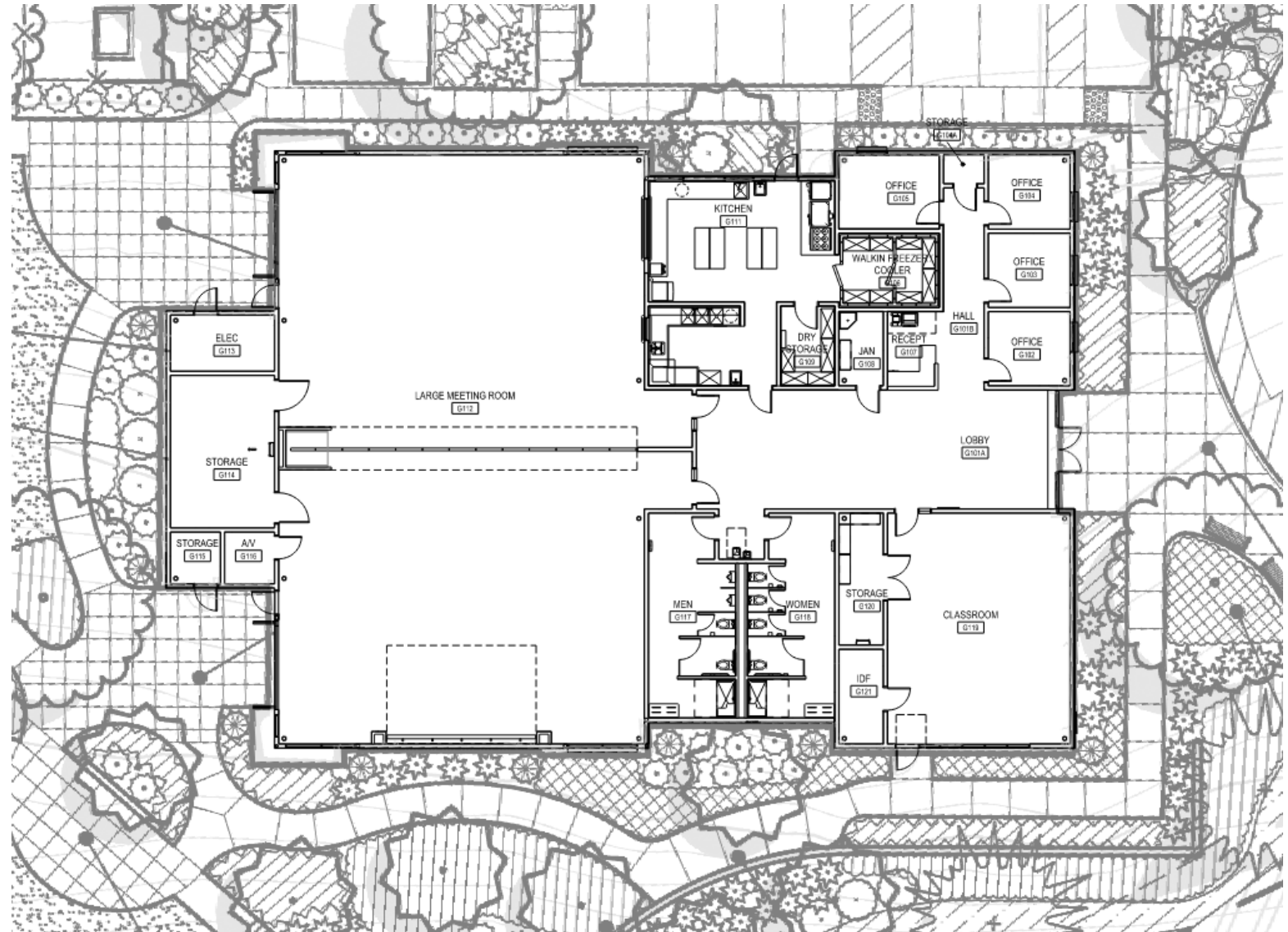
CRC Project- Committee Structure

- The goals of the organizational structure for the CRC project were to:
 - Create a structure that is efficient and inclusive
 - Ensure all segments of the community are represented and provided the opportunity to have a voice in the process
 - Complete the tasks on time and within the allocated budget
- **Advisory Committee**
 - Provides high level oversight and guidance to the project. The committee included a Project Manager along with other key County staff.
- **Community Stakeholder Advisory Committee**
 - This committee represented on or more of the following: 1) the geographic areas being considered for the location of the CRC; and/or 2) agencies that provide or assist in the provision of services throughout the County. This group was responsible to confirm that the proposed services desired by the communities were communicated to the designer and the Advisory Committee.

CRC Project- Details

- The two Community Resilience Centers are located in Groveland and Tuolumne
 - Groveland CRC- Ferretti Road just past GCSD Administrative Office
 - Tuolumne CRC- Bay Street near Tuolumne Library/Youth Center
- The CRC Facilities are roughly 9,000 sq.ft. and contain the same floor plan. Outside amenities are different to match the goals of that community.
- The CRC buildings contain the following:
 - Reception/Lobby Area
 - Four Offices
 - Small Classroom (50 people)
 - Large Conference Room (278 people)/ Divided into two
 - Commercial Kitchen with walk-in freezer and storage area
 - Bathrooms with showers
 - Whole facility could be on generator power if needed
 - Wifi throughout the building
 - Plenty of parking
- Construction commenced May 3, 2021, and was completed November 2022.

CRC Project- Floor Layout Rendering



CRC Project-

What is a CRC

- The CRCs are a living building that provides services and programs to the residents of the community both during emergencies and non-emergency times.
- **During Emergencies**
 - Mass sheltering and mass feeding
 - Warming and cooling center
 - Emergency presentations and town hall meetings
- **Non-Emergencies**
 - Receive programs and services from various providers
 - Attend training/community meetings
 - Learn new skills or get your GED
 - Celebrate a special occasion

CRC Project- Partnerships

- The CRC facilities give County Government and other organizations an opportunity to bring services and programs traditionally provided in downtown Sonora out to where our residents live.
- The County has teamed up with the following agencies to provide services, programs and classes in these centers:
 - **Amador Tuolumne Community Action Agency** – Food distribution, housing stabilizations services and training
 - **Columbia College (Groveland)**- On-line college classes
 - **Health and Human Services Agency**- Social Services, Public and Behavioral Health outreach
 - **Innovation and Business Assistance**- Business resource and assistance, training, counseling
 - **Southside Seniors**- Senior meal program, classes, mentoring programs
 - **Tuolumne County Superintendent of Schools ((Tuolumne))**- High School classes for young adults, mentoring programs
 - **Tuolumne County Sheriff**- Community Service Unit Office

CRC Project- Tuolumne CRC Renderings





CRC Project- Tuolumne CRC Renderings





CRC Project- Groveland CRC Renderings





**GROVELAND COMMUNITY
RESILIENCE CENTER**

18986





- **Lake County**
- **Community Resilience Centers**
 - **Neighborhood-level cooling, warming, and clean air centers**
- **Long Term Project**
 - **New stand-alone facility with services that can serve as an evacuation shelter**

