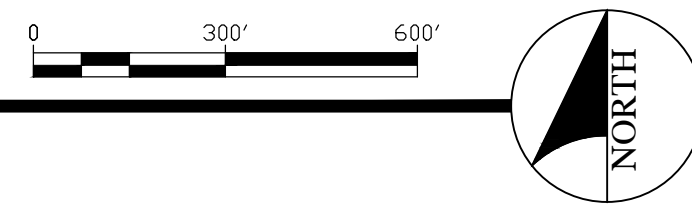


1 EXISTING AREA SITE PLAN
1" = 300'



LAKE CO DEVELOPMENT
CONTACT: AUTUMN KARCEY, CEO
(951) 379-8888
AUTUMN@LAKECODEVELOPMENT.COM

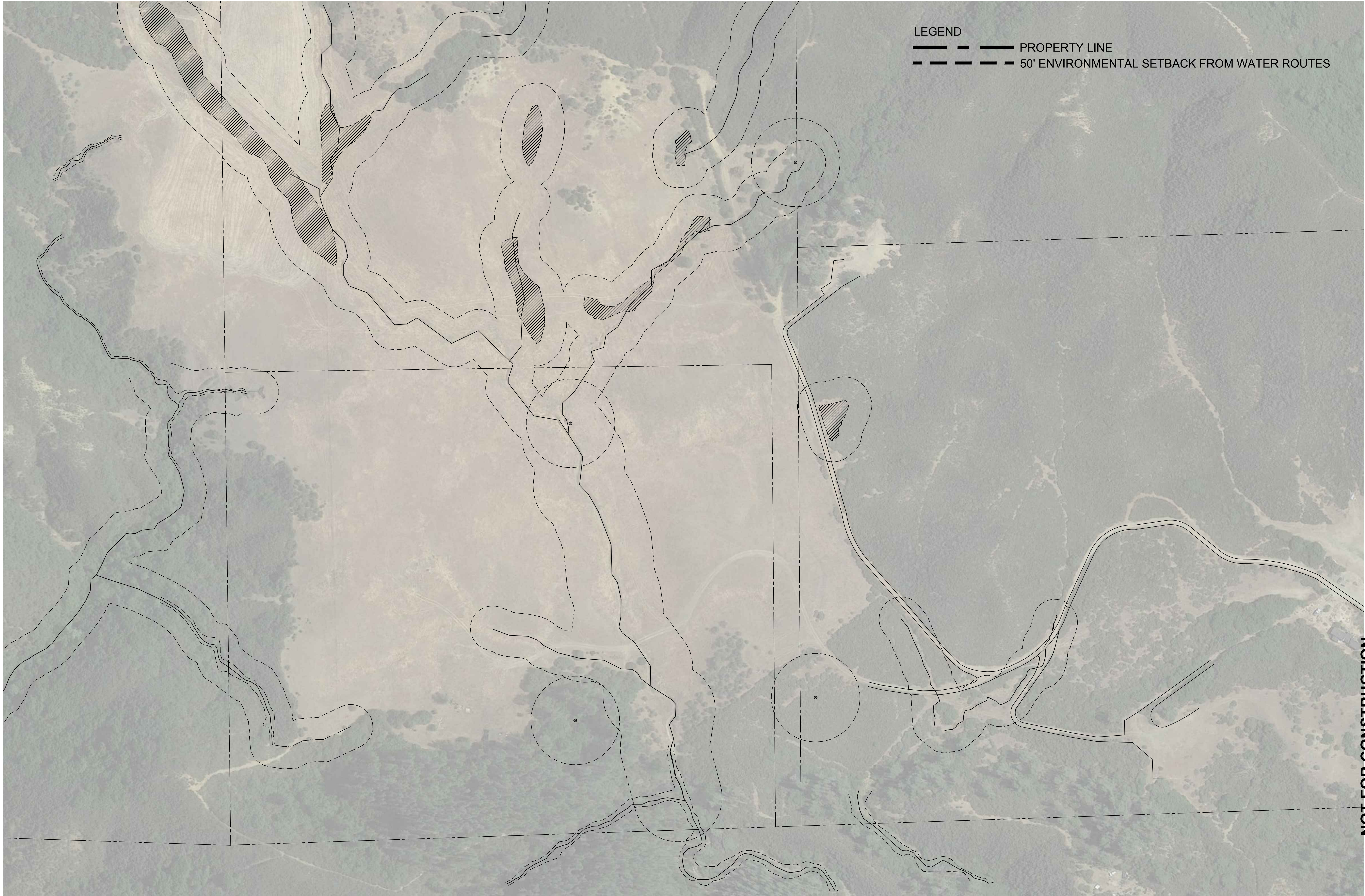
CULTIVO
EXPERIENCE - DESIGN - INNOVATION
CULTIVINE.COM

HIGHLAND FARMS, LP
CANNABIS CULTIVATION OPERATION
7408, 7533, 7527 & 7634, 7746 HIGHLAND SPRINGS RD
AND 7257 & 7357 AMBER RIDGE ROAD
LAKEPORT, CA 95453

EXISTING AREA SITE PLAN

DATE ISSUED	10 NOV 23
INITIAL SUBMITTAL	27 OCT 20
DRAWN BY	WB
CHECKED BY	WB
JOB NO.	21038

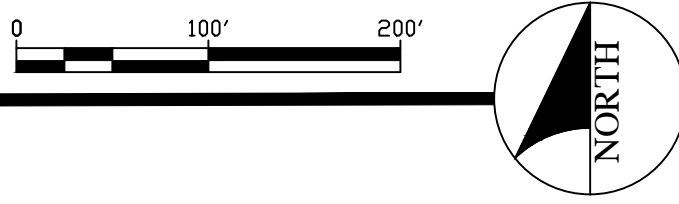
GS-01



LEGEND
——— PROPERTY LINE
- - - 50' ENVIRONMENTAL SETBACK FROM WATER ROUTES

NOT FOR CONSTRUCTION

1 ENVIRONMENTAL SETBACK PLAN
1" = 100'

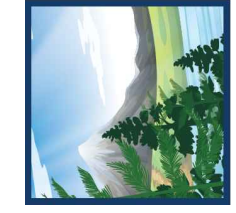


HIGHLAND FARMS, LP
CANNABIS CULTIVATION OPERATION
7408, 7533, 7527 & 7634, 7746 HIGHLAND SPRINGS RD
AND 7257 & 7357 AMBER RIDGE ROAD
LAKEPORT, CA 95453

DATE ISSUED 10 NOV 23
INITIAL SUBMITTAL 27 OCT 20

DRAWN BY WB
CHECKED BY WB
JOB NO. 21038

CULTIVO
EXPERIENCE - DESIGN - INNOVATION
CULTIVOINC.COM

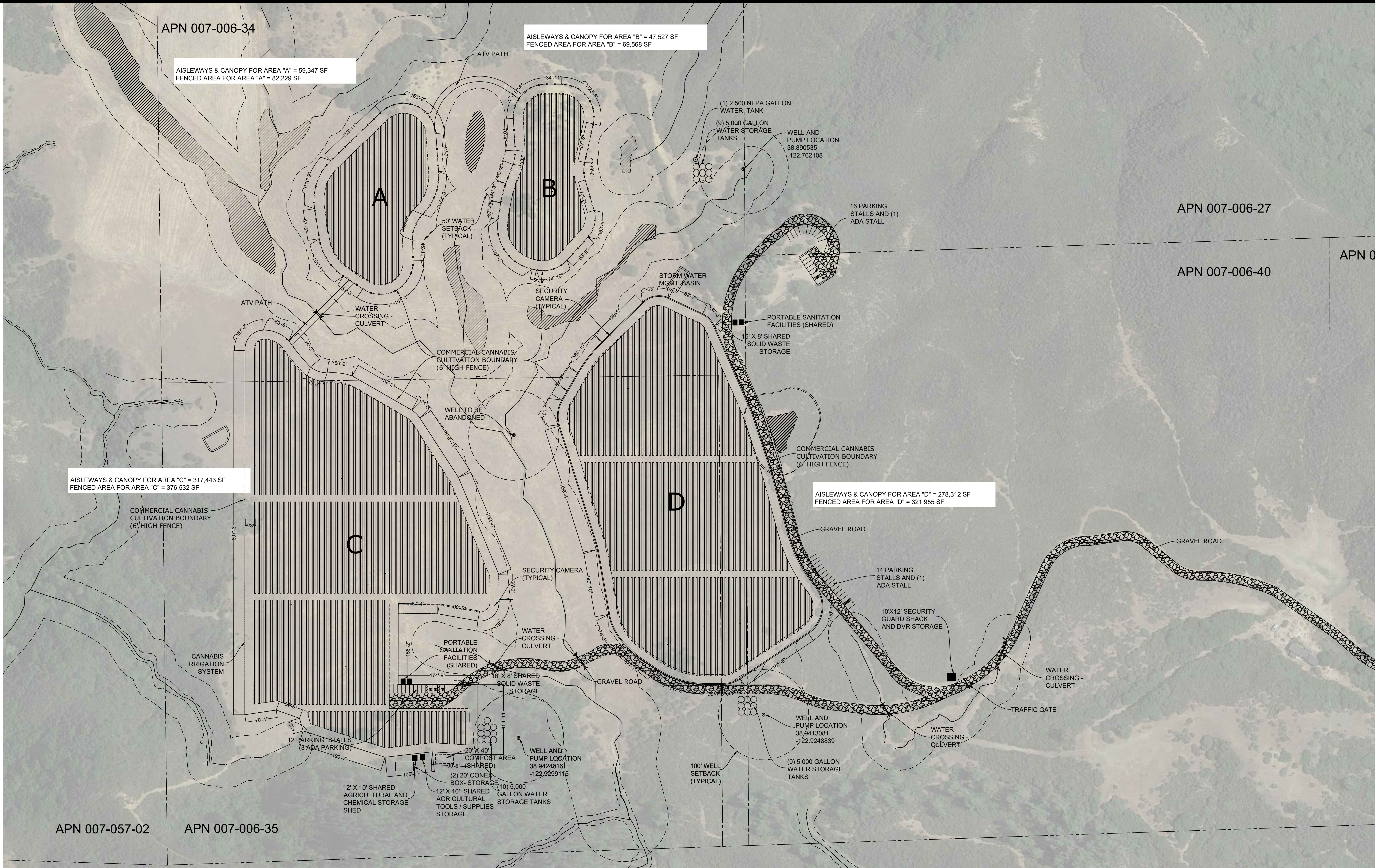


LAKE CO
DEVELOPMENT

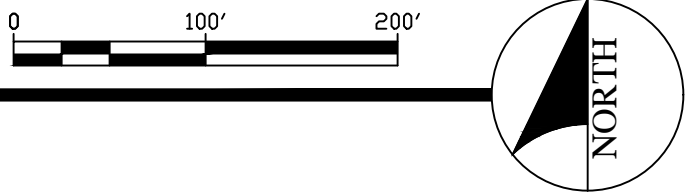
CONTACT:
AUTUMN KARCEY, CEO
(530) 379-8588
AUTUMN@LAKECODEVELOPMENT.COM

ENVIRONMENTAL SETBACK PLAN

EX-01



1 SITE PLAN- PHASE 1
1" = 100'



LAKE CO
DEVELOPMENT

CONTACT:
AUTUMN KARCEY, CEO
(951) 379-8588
AUTUMN@LAKECODEVELOPMENT.COM

CULTIVO

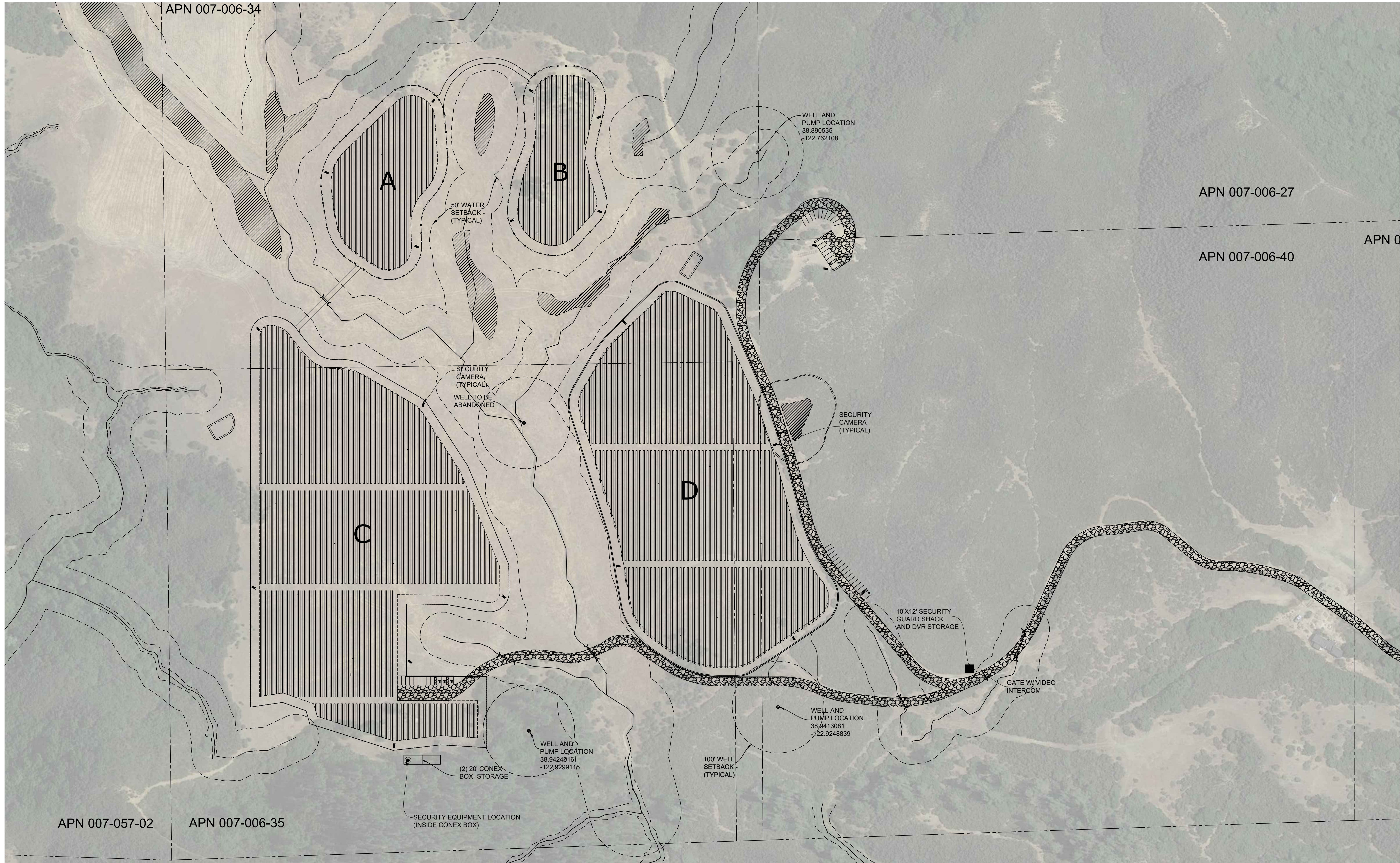
CULTIVOINC.COM
EXPERIENCE - DESIGN - INNOVATION

HIGHLAND FARMS, LP
CANNABIS CULTIVATION OPERATION
7408, 7533, 7527 & 7634, 7746 HIGHLAND SPRINGS RD
AND 7257 & 7357 AMBER RIDGE ROAD
LAKEPORT, CA 95453

SITE PLAN- PHASE 1

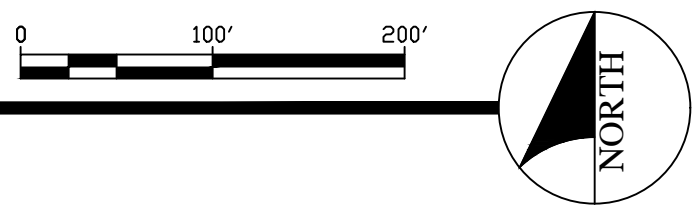
DATE ISSUED	10 NOV 23
INITIAL SUBMITTAL	27 OCT 20
DRAWN BY	WB
CHECKED BY	WB
JOB NO.	21038

EA-01



NOT FOR CONSTRUCTION

1 SECURITY PLAN - PHASE 1
1" = 100'



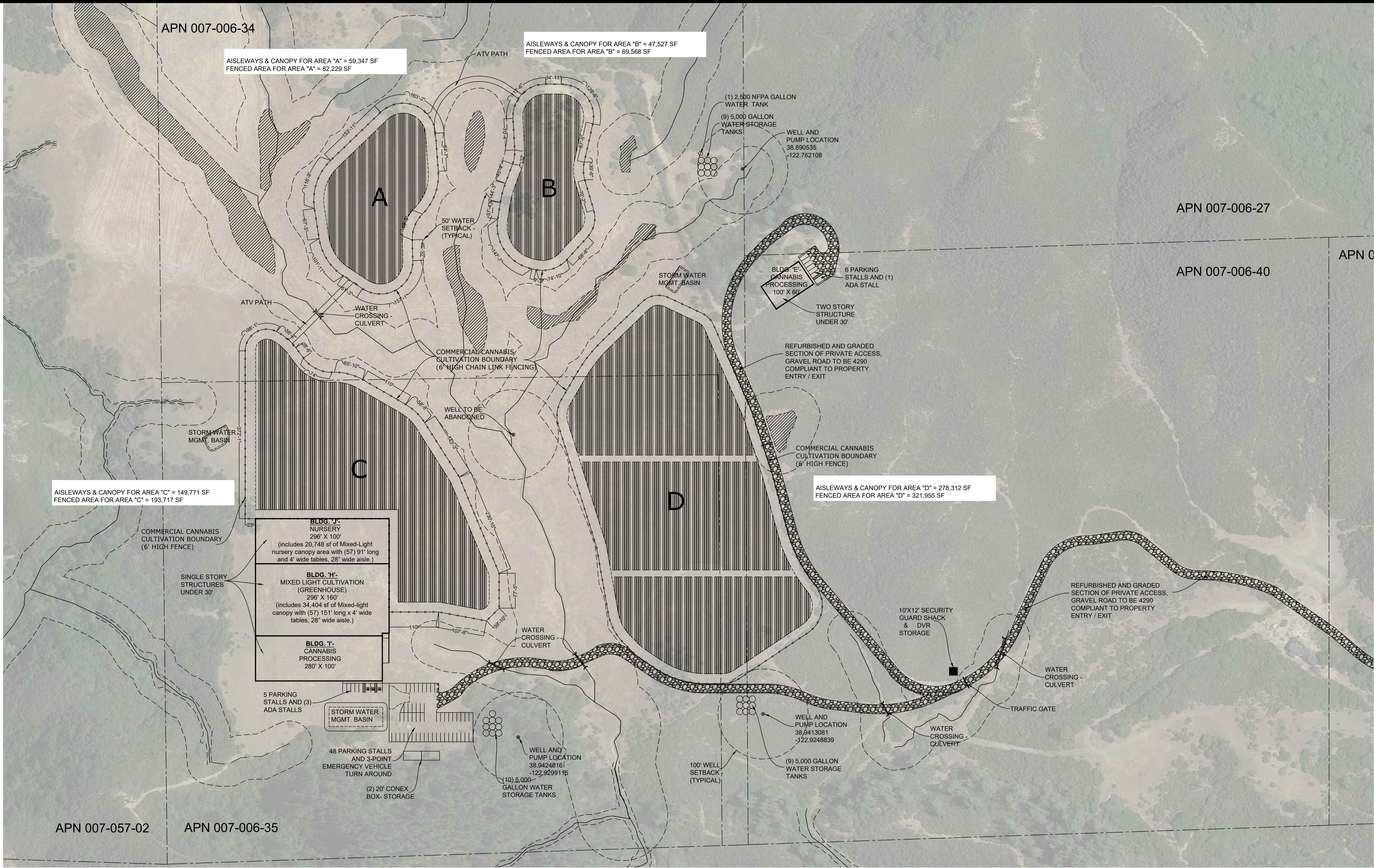
HIGHLAND FARMS, LP
CANNABIS CULTIVATION OPERATION
7408, 7533, 7527 & 7634, 7746 HIGHLAND SPRINGS RD
AND 7257 & 7357 AMBER RIDGE ROAD
LAKEPORT, CA 95453



SECURITY PLAN - PHASE 1

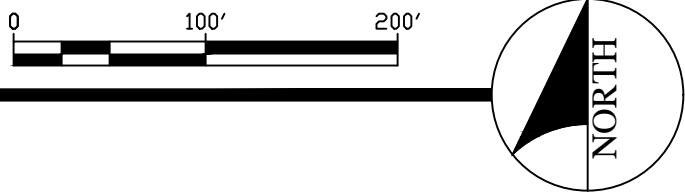
DATE ISSUED	10 NOV 23
INITIAL SUBMITTAL	27 OCT 20
DRAWN BY	WB
CHECKED BY	WB
JOB NO.	21038

EA-02



NOT FOR CONSTRUCTION

1 SITE PLAN - PHASE 2
1" = 100'

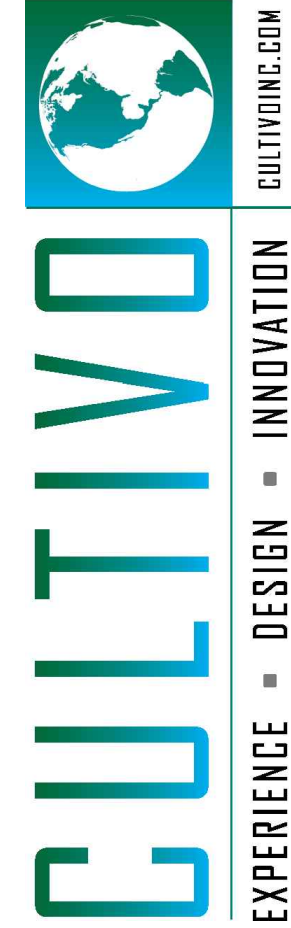


HIGHLAND FARMS, LP
CANNABIS CULTIVATION OPERATION
7408, 7533, 7527 & 7634, 7746 HIGHLAND SPRINGS RD
AND 7257 & 7357 AMBER RIDGE ROAD
LAKEPORT, CA 95453

SITE PLAN - PHASE 2

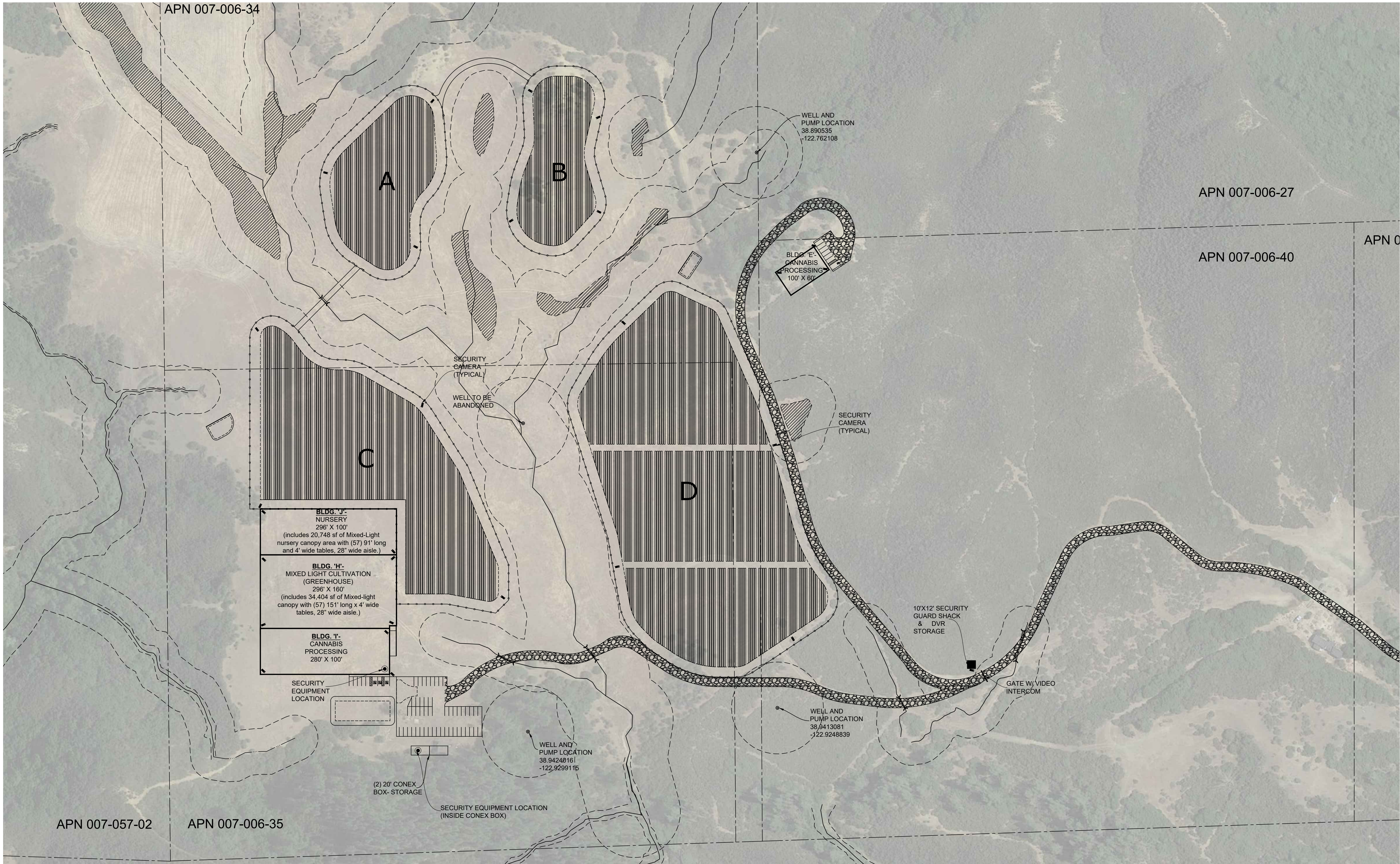
DATE ISSUED	10 NOV 23
INITIAL SUBMITTAL	27 OCT 20
DRAWN BY	WB
CHECKED BY	WB
JOB NO.	21038

MUP-01



CONTACT:
AUTUMN KARCEY, CEO
(530) 379-8588
AUTUMN@LAKECODEVELOPMENT.COM

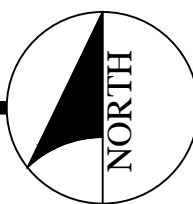
LAKE CO
DEVELOPMENT

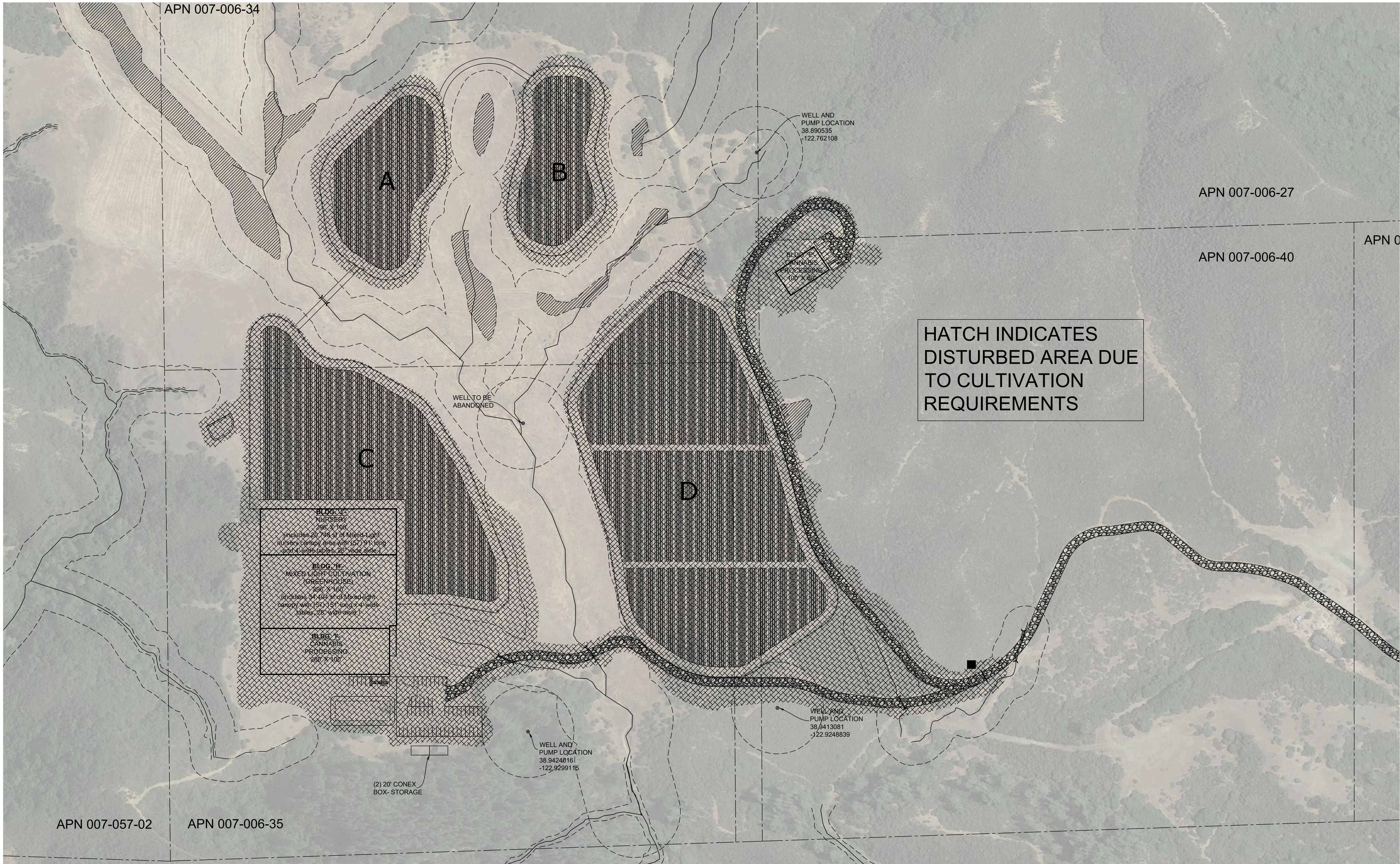


1 PHASE 2 - SECURITY PLAN

1" = 100'

0 100' 200'





1 **DISTURBED AREA PLAN**
1" = 100'

NOT FOR CONSTRUCTION

HIGHLAND FARMS, LP
CANNABIS CULTIVATION OPERATION
7408, 7533, 7527 & 7634, 7746 HIGHLAND SPRINGS RD
AND 7257 & 7357 AMBER RIDGE ROAD
LAKEPORT, CA 95453

DISTURBED AREA PLAN

DATE ISSUED 10 NOV 23
INITIAL SUBMITTAL 27 OCT 20

DRAWN BY WB
CHECKED BY WB
JOB NO. 21038

MUP-04



CONTACT:
AUTUMN KARCEY, CEO
(530) 379-8588
AUTUMN@LAKECODEVELOPMENT.COM