

Six Month Work Review and future Plan

Noemi Doohan MD, PhD, MPH

Public Health Officer, County of Lake

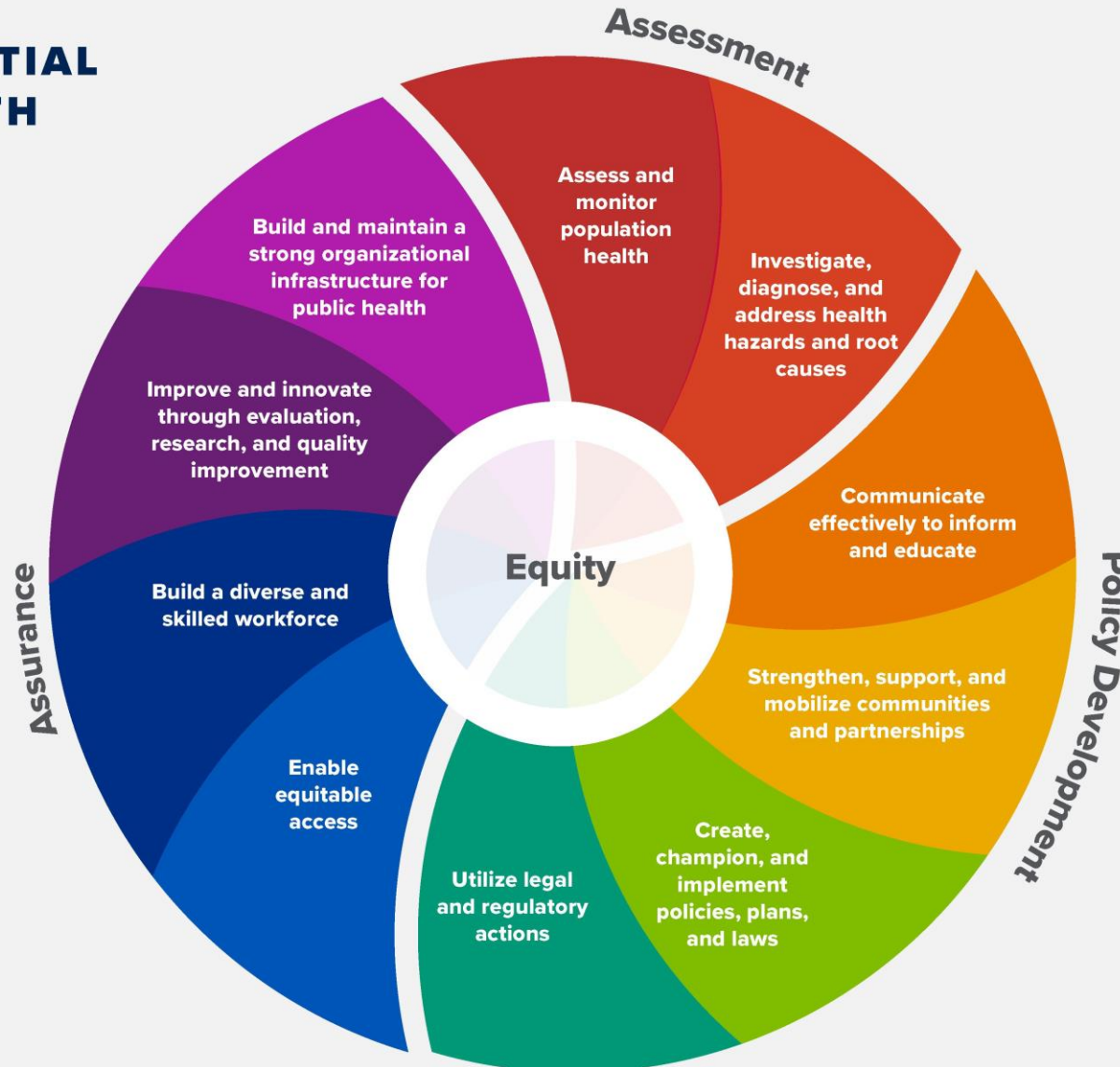
May 7, 2024

The Public Health Officer's work spans the 10 essential Public Health Services in partnership with Health Services Director

THE 10 ESSENTIAL PUBLIC HEALTH SERVICES

To protect and promote the health of all people in all communities

The 10 Essential Public Health Services provide a framework for public health to protect and promote the health of all people in all communities. To achieve optimal health for all, the Essential Public Health Services actively promote policies, systems, and services that enable good health and seek to remove obstacles and systemic and structural barriers, such as poverty, racism, gender discrimination, and other forms of oppression, that have resulted in health inequities. Everyone should have a fair and just opportunity to achieve good health and well-being.



Created 2020

ASSESSMENT

1. Population Health
2. Health Hazards-Root Causes

POLICY DEVELOPMENT

3. Communicate-Educate
4. Strengthen Communities
5. Create-Champion Policies
6. Utilize Legal Action

ASSURANCE

7. Enable Equitable Access
8. Build Diverse Workforce
9. Improve and Innovate
10. Build Strong Organization

from: www.cdc.gov

The Public Health Officer's ongoing work spans the 10 essential Public Health Services

ASSESSMENT

1. Population Health
2. Health Hazards-Root Causes

Population Health

- Designing CHW program
 - Path Cited round 2 grant
 - MCAH Home Visiting program
- Opioid Epidemic-Safe Rx
 - Harm Reduction efforts
 - State, School, CBO partners
- Partnership Health Plan engagement
 - Board, PAC and QIHEC membership
 - Roll out of Health Services billable services
- Title 15 Jail inspection and ongoing oversight
- Ambulance Ordinance to EMCC committee
 - IFT

Health Hazards-Root Causes

- Emergency Response:
 - MHOAC
 - EH
 - Arranging for back up PHO coverage
- Climate Related (One Health)
 - HABS
 - CHARMS (extreme heat)
 - ClearLake Hitch
- Communicable Diseases
 - Strengthening Local Surveillance
 - Wastewater, CAL-REDIE, reporting protocols
 - Mosquito Borne (West Nile, Dengue)
 - Coccidiomycosis (Valley Fever)
 - STIs: Syphilis, HepC
 - Rabies
 - Respiratory, avian flu
 - Hot Measles and Tularemia

The Public Health Officer's ongoing work spans the 10 essential Public Health Services

POLICY DEVELOPMENT

3. Communicate-Educate
4. Strengthen Communities

Communicate-Educate

- Support PIO function
 - RANCHO BMG training
- Health Care Partners meetings and trainings
- Schools: overdose, BH, albuterol
- Neighboring LHJs
- Medical Society (Lake-Mendo-Sonoma)

Strengthen Communities

- Opioid Settlement and SafeRX
- CDPH funding opportunities
 - HepC, FOPH
- BH-ED MOU
- Jail and WellPath, JI Path cited
- Intergovernmental Relations with Tribal Nations, Cities and State

The Public Health Officer's ongoing work spans the 10 essential Public Health Services

POLICY DEVELOPMENT

5. Create-Champion Policies

6. Utilize Legal Action

Create-Champion Policies

- P and Ps for Public Health
 - Communicable Disease
 - Shelter Outbreak prevention
 - Jail and WellPath
- 171+ PHO duties by statute
 - Creating structure and workflows

Utilize Legal Action

- CCLHO legislative committee
- Involvement as appropriate in new law mandates that impact PH
 - Proposition 1 – BH Services Act including SUD - \$6.36 Billion
 - Doula Proposition (NaCO per chair Sabatier)
 - Albuterol inhalers for Schools – AB1283 through Direct Relief

The Public Health Officer's ongoing work spans the 10 essential Public Health Services

ASSURANCE

7. Enable Equitable Access
8. Build Diverse Workforce

Enable Equitable Access

- County Vaccine clinics
- Naloxone Distribution
- MAT in jail
- AH ED STI testing collaboration
- CDPH funded Mobile Medical Clinic Van future planning

Build Diverse Workforce

- Cal-EIS Fellow (new MPH grad)
- Recruitment of Epidemiologist
- Recruitment of PHN
- Recruitment of NP
- Funding and job description for back up PHO
- MOU for PHO LHJ x-coverage

The Public Health Officer's ongoing work spans the 10 essential Public Health Services in partnership with Health Services Director

ASSURANCE

9. Improve and Innovate
10. Build Strong Organization

Improve and Innovate

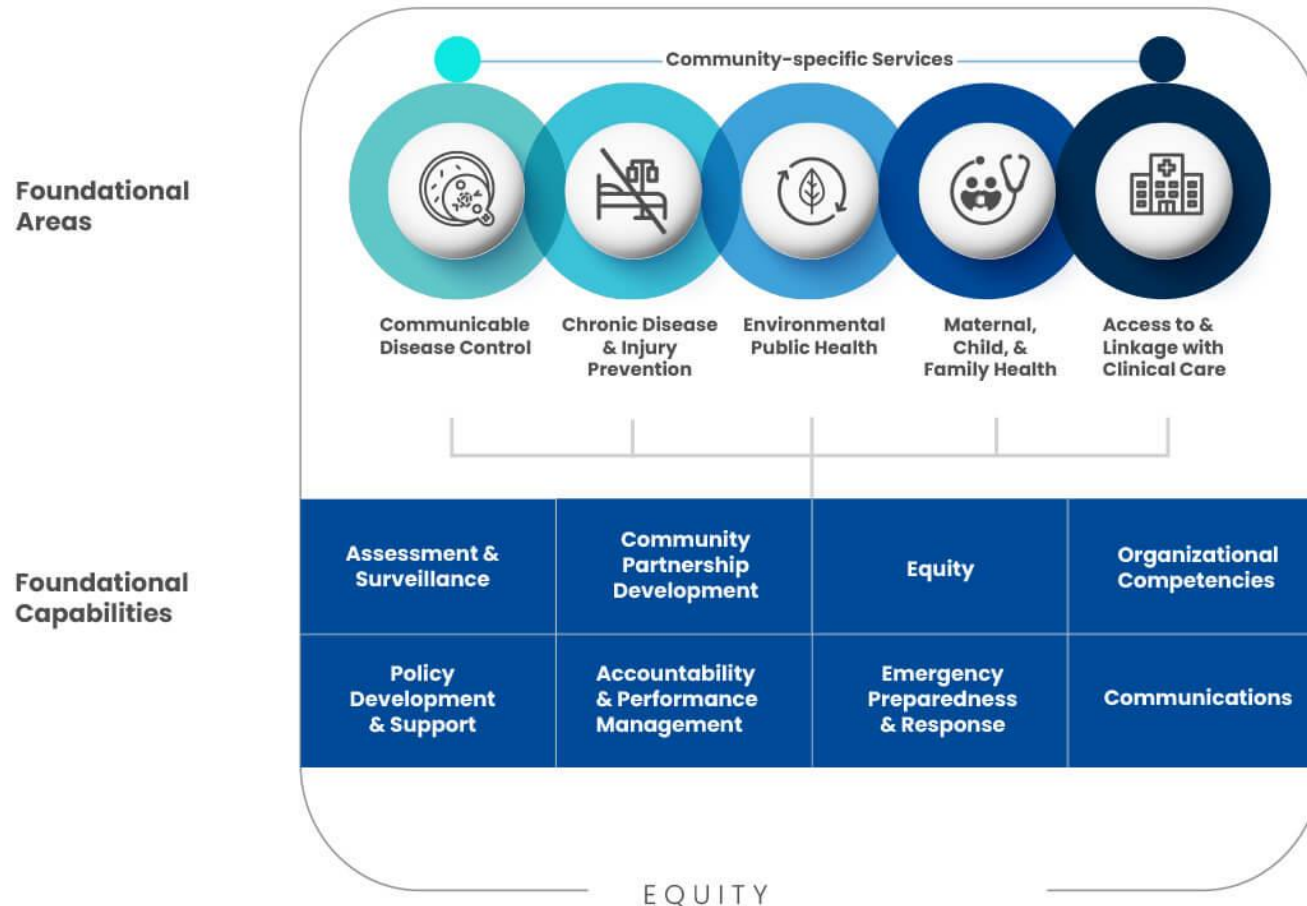
- Cal-AIM and Path Cited
 - Creating pathways for billing for Medi-CAL services including with medical Van
 - Populations of focus
 - BH and youth at school
 - Birth and Maternity equity
 - Jail reentry
- Jail Medical with WellPath
- MMR education for community
- STI education for providers
- Medical Treatment Unit (MTU)

Build Strong Organization

- Support HS Director Arton
- Build Inter-dept collaborations
 - BH
 - Jail
 - Animal Services
 - Social Services
- State CDPH Connections
 - BRAVE and ALL OF US training
 - CCLHO board membership
 - HOAC mentor for new health officers
- Prepare for Emergency Response
 - Tabletop exercises including Functional

Sampling of 6 month Completed PHO Accomplishments: another way to view Health Officer Duties (PH accreditation lens)

Foundational Public Health Services



Communicable Disease Control

- Rabies Reporting protocol
- Respiratory Season Guidance/Support
- Active Case Investigation

Chronic Disease + Injury Prevention

- Ambulance ordinance to EMCC
- Title 15 jail inspection
- MHOAC function during trainings and response
- Back up Public Health Officer plan

Environmental Public Health

- Supporting EH dept - incident response
- CHARMS + Clearlake Hitch convenings

Maternal Child and Family Health

- Path Cited CHW grant and JI planning
- Safe Narcan distribution at schools

Access to and Linkage with Clinical Care

- PHP board and PAC and QiHEC
- Health Partner meetings

High Level Work Plan year one Public Health Officer:

In all areas the following goals will be met (details available for any item)

First Quarter: develop and strengthen relationships, learn the landscape (Sept-Dec)

Second Quarter: improve on existing programs and implement new ones (Dec -March)

Third Quarter: evaluate outcomes (March-June)

Fourth Quarter: plan for growth and improvement in year two (June-Sept)

Third Quarter: evaluate outcomes
(March-June)

- Focus on Measuring what Matters
- Be Prepared to make presentations on outcomes measured
- Evaluate outcomes in context of local, regional and statewide landscape

Fourth Quarter: plan for growth and improvement in year 2
(June-Sept)

- In alignment with Health Services Dept. 3 pillars of Strategic Plan of
 - Communication
 - Financial Stability
 - Workforce Development
- Determine which programs should be:
 - grown vs put on hold vs modified
- Focus on strategy for improving outcomes

Sampling of **specific** Next 6 Month specific Goals and Priorities together with Health Services Director Arton

Foundational Public Health Services	Goals and Priorities	Time frame for completion
Communicable Disease Control	STI training for Health Care Partners CD communications and action plan CD activity and outcomes reporting	July 2024 Sept 1 2024 July 1, 2024
Chronic Disease + Injury Prevention	Design plan for billable services And begin implementation (Path cited)	Sept 1 2024
Environmental Public Health	Design plan for One Health communications across departments	Sept 1 2024
Maternal Child and Family Health	Strengthen Operations of MTU Support growth of billable Home Visiting CHW program	Sept 1, 2024 July 1, 2024
Access to and Linkage with Clinical Care	Support growth of billable Path Cited and ECM Billable services (CHW and JI)	Sept 1 2024
Succession Planning	Identify back up to PHO	Sept 1, 2024

The Public Health Officer's ongoing work spans the 10 essential Public Health Services

As your Public Health Officer, I welcome the opportunity to make detailed presentations on any of these items to the Board and Community!!

