



**Lake County Behavioral Health Services
CARE Court Presentation**

CARE Court

What is it?

How will CARE Court work?

Civil court process

Referrals from
many sources

Initial screening for
criteria

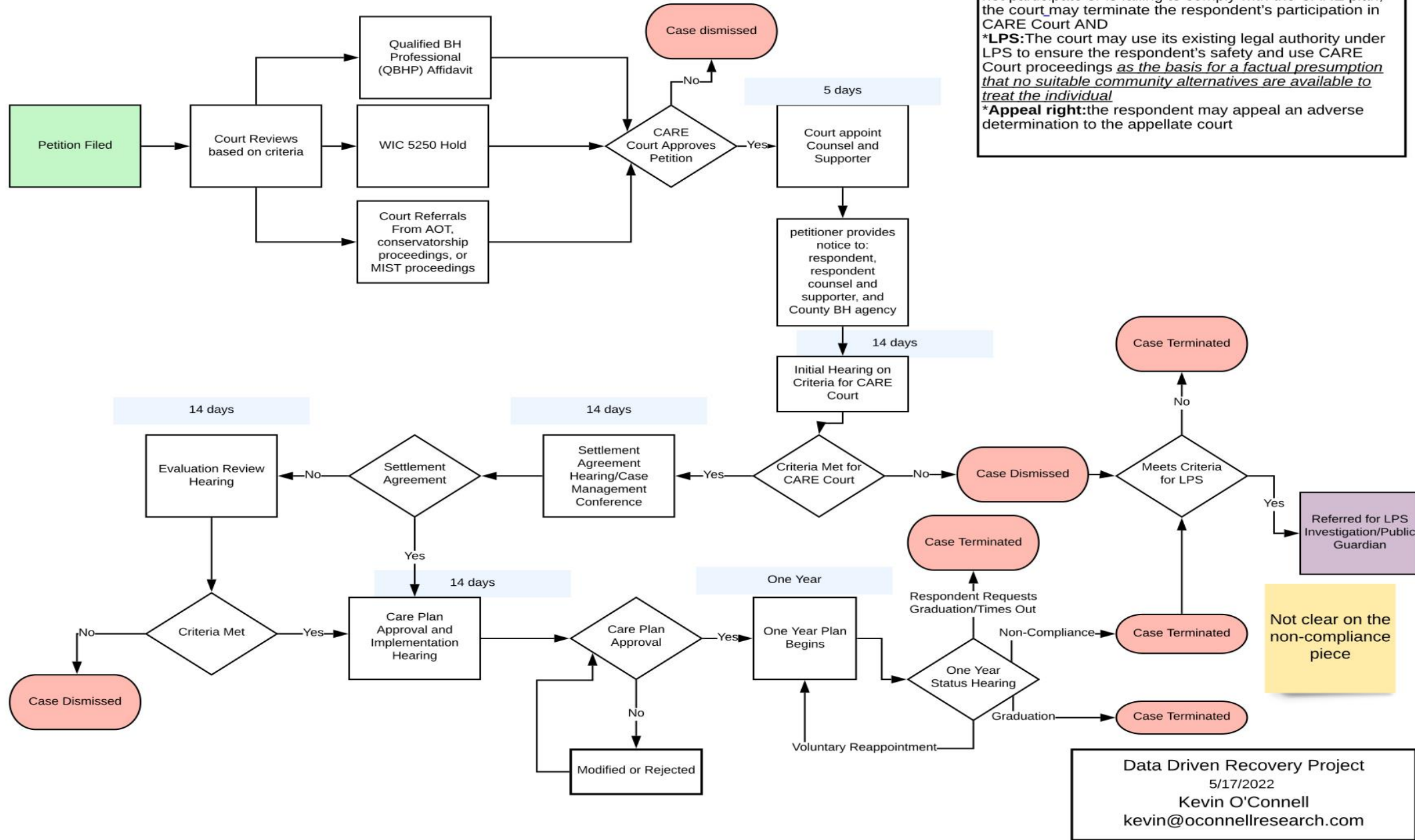
Opportunity for a
settlement
agreement

Behavioral Health
Services performs
an assessment and
creates a plan

Sanctions on the
individual and
department if no
adherence

CARE Court

DRAFT DRAFT DRAFT



Positive aspects of CARE Court

Opportunity to connect to hard-to-reach individuals

Prioritization of treatment and housing resources for vulnerable population

Focus on “No Wrong Door” and intense case management

Concerns about CARE Court – Client Rights



Compelled treatment often is ineffective



Even though this is civil court, unclear what “penalties” clients face including LPS conservatorship



Adds to the stigma faced by unsheltered people



Still unclear how people with substance use disorder fit in

Concerns about CARE Court - Capacity

Behavioral Health Services is to be responsible for locating the referred person and bringing them to court

Possibly many court hearings in a very short time frame – unbillable time

Funding for courts, not Behavioral Health Services staff

Big impacts on Courts, Public Defender and County Counsel

Concerns about CARE Court - Resources

Housing is the key resource that people need but there is not enough

This population will need the highest levels of care – already full

Potential to have to contract out for services

Questions?

Policy provisions still not finalized

A lot of politics in the mix (pressure from cities, pressure from state hospitals, upcoming elections)

Behavioral Health Services Departments and Counties are advocating for more funding to make this viable

Lake County Behavioral Health Services

- 6302 Thirteenth Avenue
- Lucerne, CA 95458

- 7000-B South Center Drive
- Clearlake, CA 95422

