

ZONING MAP

LANDS OF BURGESS
11377 S STATE HIGHWAY 29
LOWER LAKE, CA 95457
APN: 049-300-02

ZONING

CURRENT ZONING, C3 (SERVICE COMMERCIAL DISTRICT)
PROPOSED ZONING, C2 (COMMUNITY COMMERCIAL DISTRICT)
CURRENT GENERAL PLAN, COMMERCIAL USE
PROPOSED GENERAL PLAN, COMMERCIAL USE

EXHIBIT "A"

SECTION 3.7(b)1, OF ORDINANCE 1602

WE HEREBY CERTIFY THAT THE PLANNING COMMISSION
OF LAKE, CALIFORNIA, ADOPTED THIS MAP ON THE

____ DAY OF _____, 20____

CHAIR, PLANNING COMMISSION

SECRETARY, PLANNING COMMISSION

WE HEREBY CERTIFY THAT THIS MAP CONSTITUTES
SECTION 3.7(b)1. OF ORDINANCE 1602, LAKE COUNTY,
CALIFORNIA, AND THAT SECTION WAS ADOPTED BY

ORDINANCE _____ PASSED

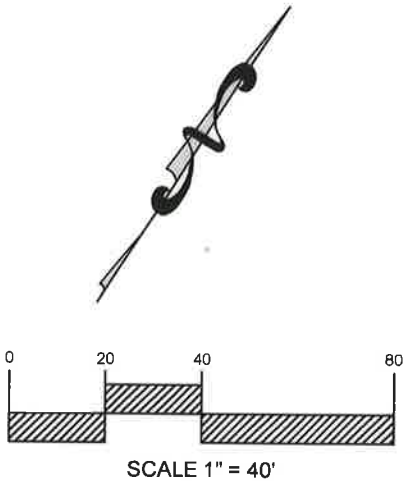
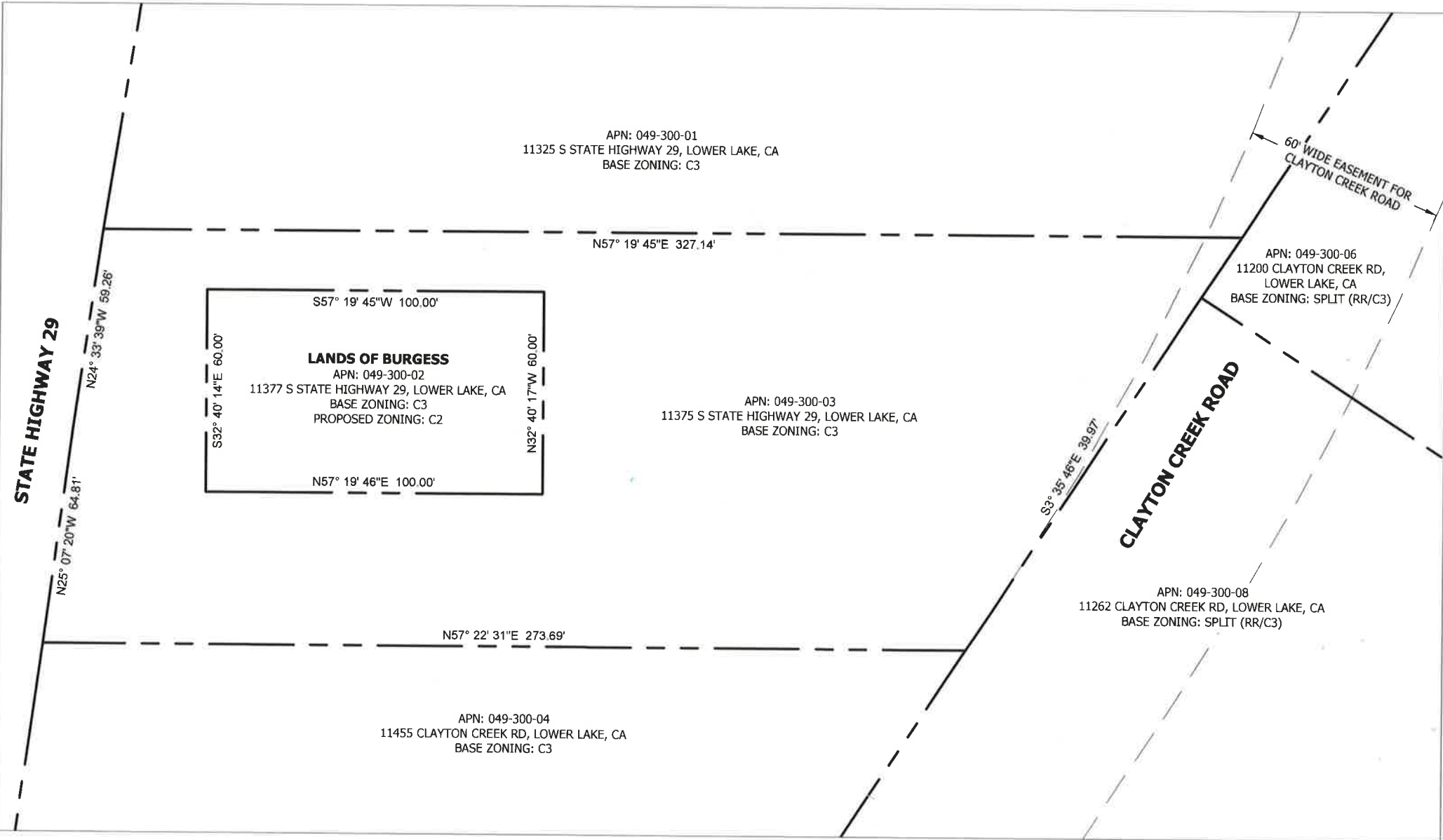
ON THE _____, DAY OF _____, 20____

CHAIR, BOARD OF SUPERVISORS

CLERK OF THE CHAIR, BOARD OF SUPERVISORS

ZONING MAP NOTE:

THIS MAP WAS PREPARED FROM PUBLIC
RECORD INFORMATION AND DOES NOT
CONSTITUTE A BOUNDARY SURVEY



NORTH BAY CIVIL CONSULTING

WWW.NORTHBAYCIVILCONSULTING.COM
PHONE: (707) 595-5919
100 E ST, SUITE 104
SANTA ROSA, CA 95404

NOTES:

1. PROPERTY LINES, EASEMENTS, AND TOPOGRAPHIC INFORMATION IS APPROXIMATE AND OBTAINED FROM PUBLICLY AVAILABLE INFORMATION. FOR PARCEL BOUNDARIES, ADJACENT PARCEL BOUNDARIES, AND LOCATION MAP SEE THIS SHEET.
2. THESE DRAWINGS ARE FOR PLANNING PURPOSES ONLY AND ARE NOT TO BE USED FOR CONSTRUCTION.



PROJECT ADDRESS:
11377 STATE HIGHWAY 29
LOWER LAKE, CA 95457

APN: 049-300-02

CLIENT:
VALERIE PENG

CONSULTANT:
KYLE GEITNER,
PRINCIPAL CONSULTANT

| | |
|--------------------|--------------------|
| DATE: 6/22/2022 | DRAWN: ANR |
| JOB #: 22-155 | SCALE: AS SHOWN |
| REVISION: | CHECKED: KJG |

SHEET TITLE:
ZONING MAP
SHEET: 1.0
1 OF 1