

**TOWER SITE DETAIL**

**PROPOSED COMMUNICATION TOWER  
SHAWL TRACT**

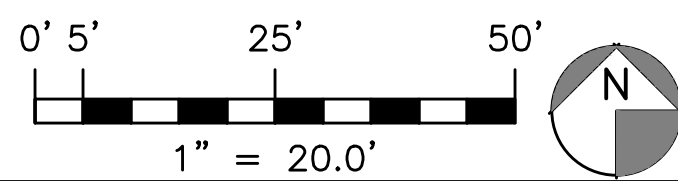
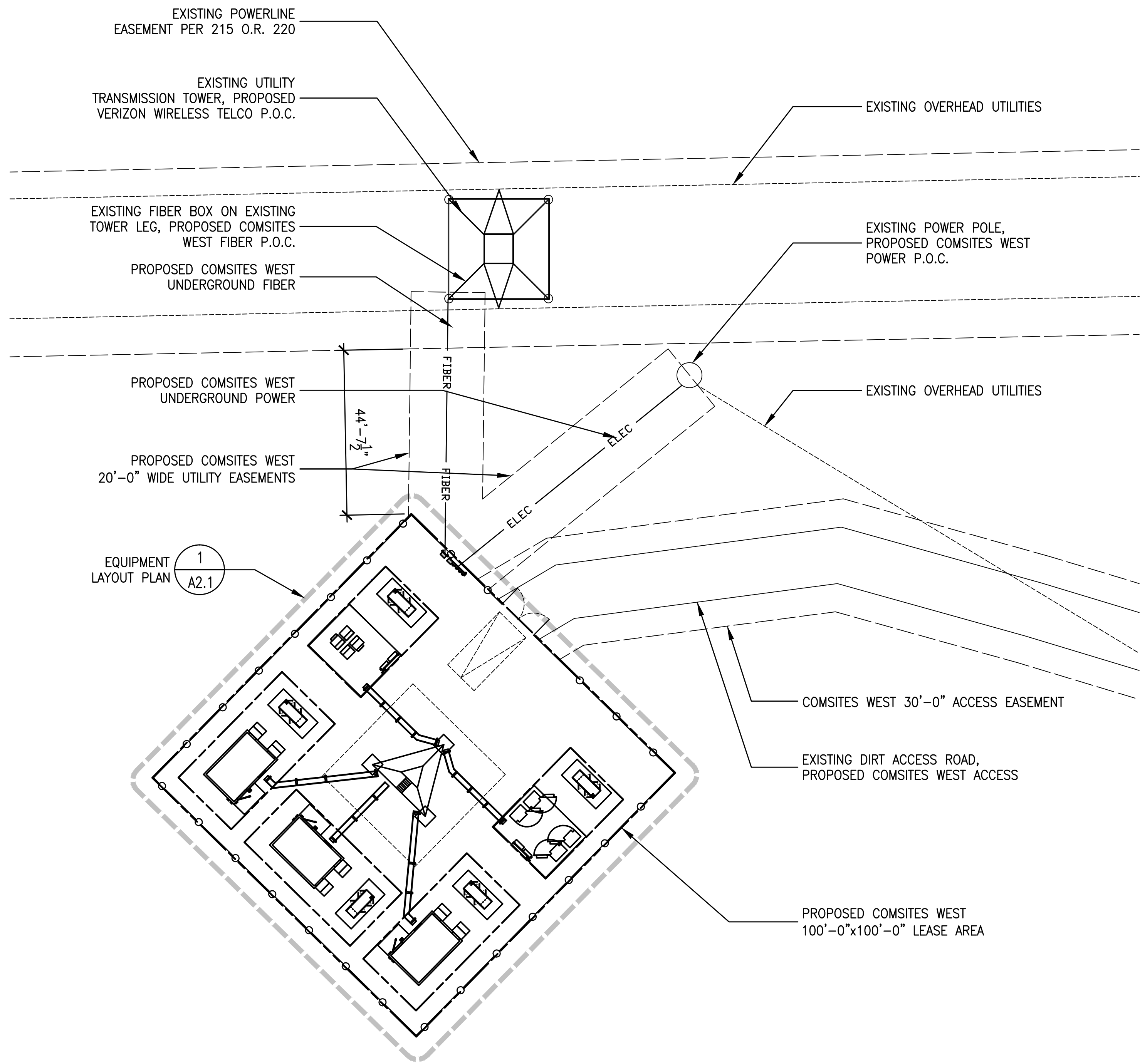
**SITUATE IN SECTION 5, T 13 N, R 6 W, MDM  
IN THE UNINCORPORATED AREA  
LAKE COUNTY, CALIFORNIA  
COM SITES WEST**

**PRECISION SURVEYING**

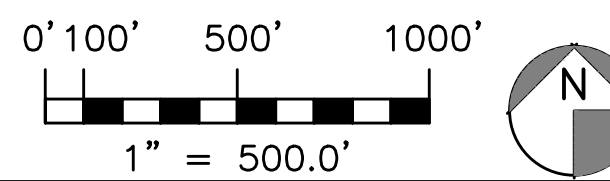
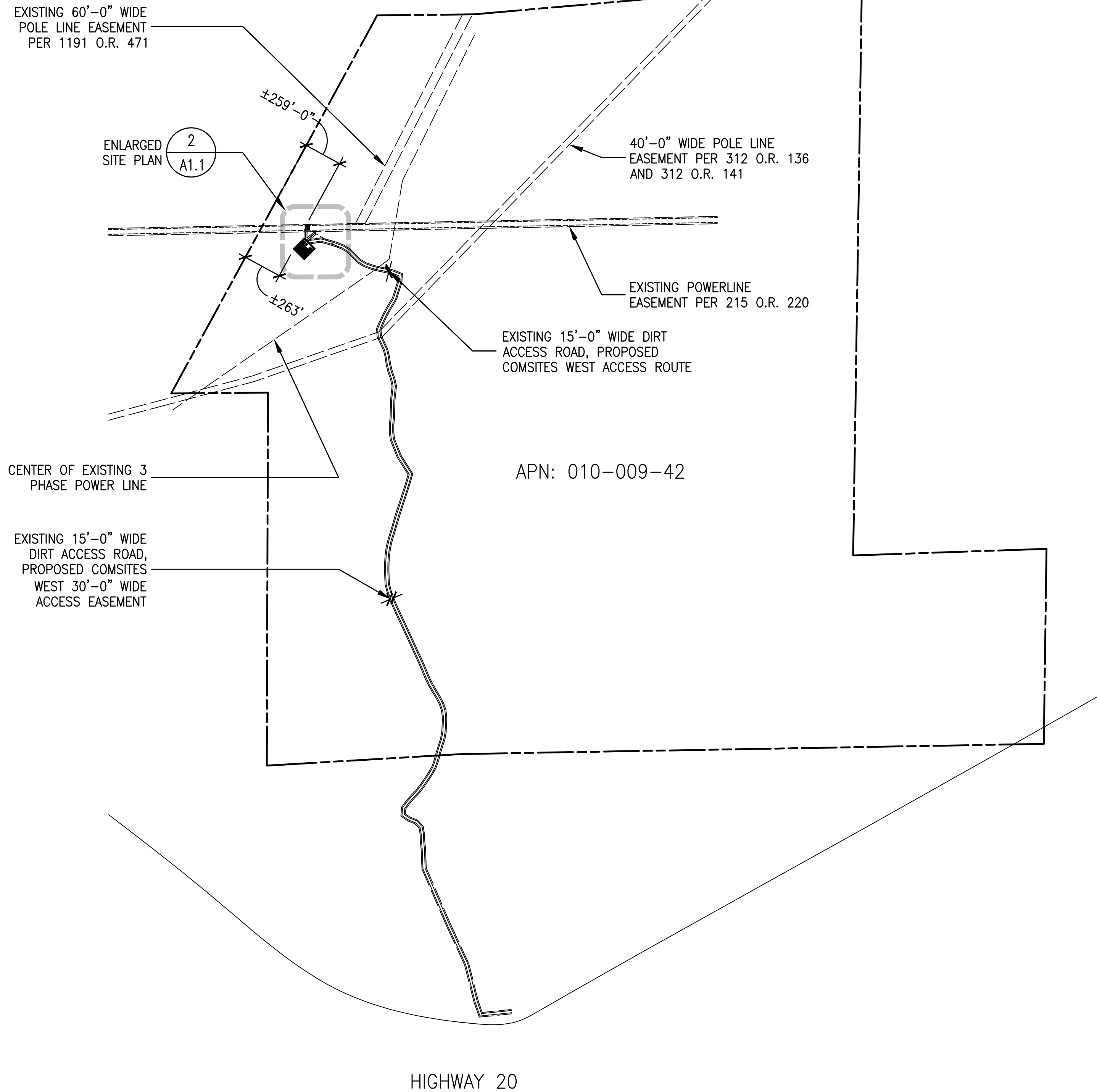
1165 HOFF WAY #204 ORLAND, CALIFORNIA 95963 530-865-4194

DATE	SCALE	SHEET
DECEMBER, 2014	AS SHOWN	1 OF 1

CSW Clearlake  
Overall.pcs  
8-9-16



(2) ENLARGED SITE PLAN  
A1.1 SCALE: 1" = 20.0'

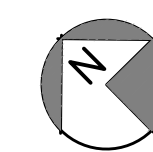
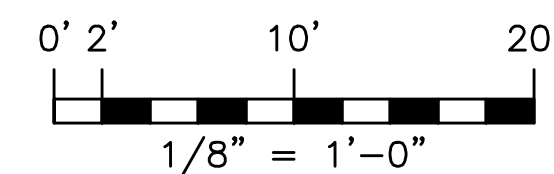
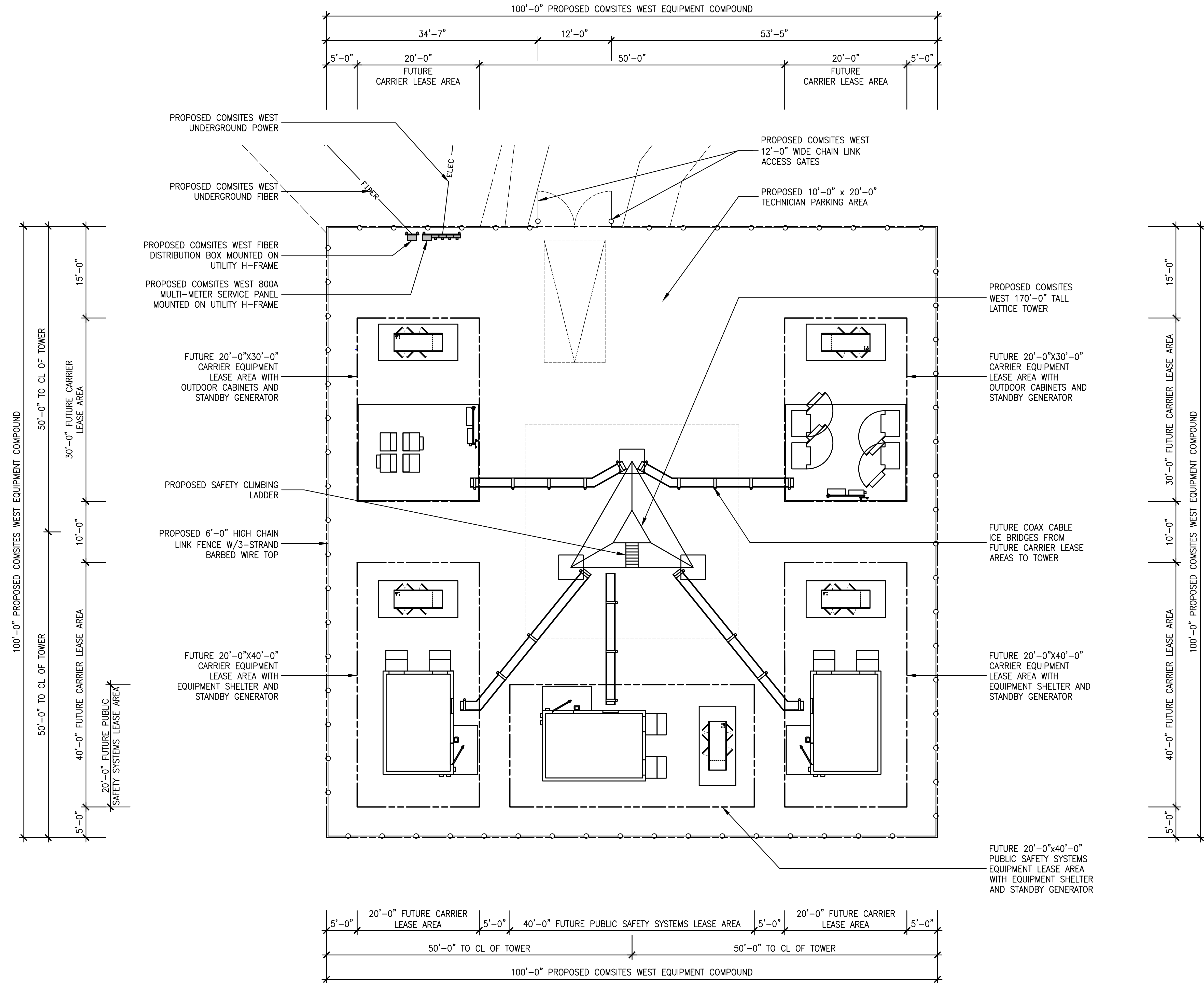


(1) OVERALL SITE PLAN  
A1.1 SCALE: 1" = 500.0'

Revisions:

△	--
△	--
△	--
△	--
△	--

File: 221.002_A11.dwg
Drawn By: MWS
Checked By: TST
Scale: AS NOTED
Date: 03/28/18

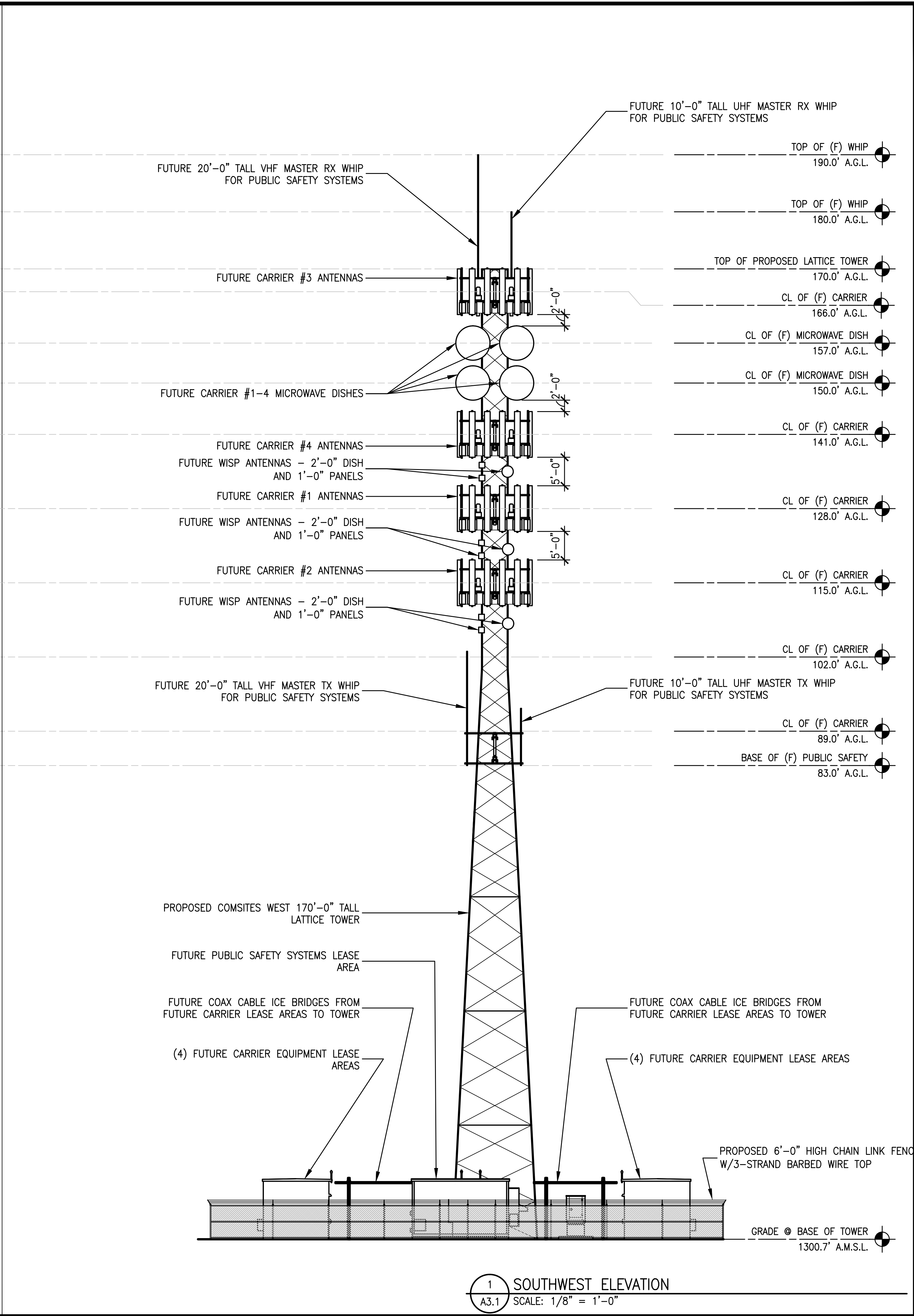
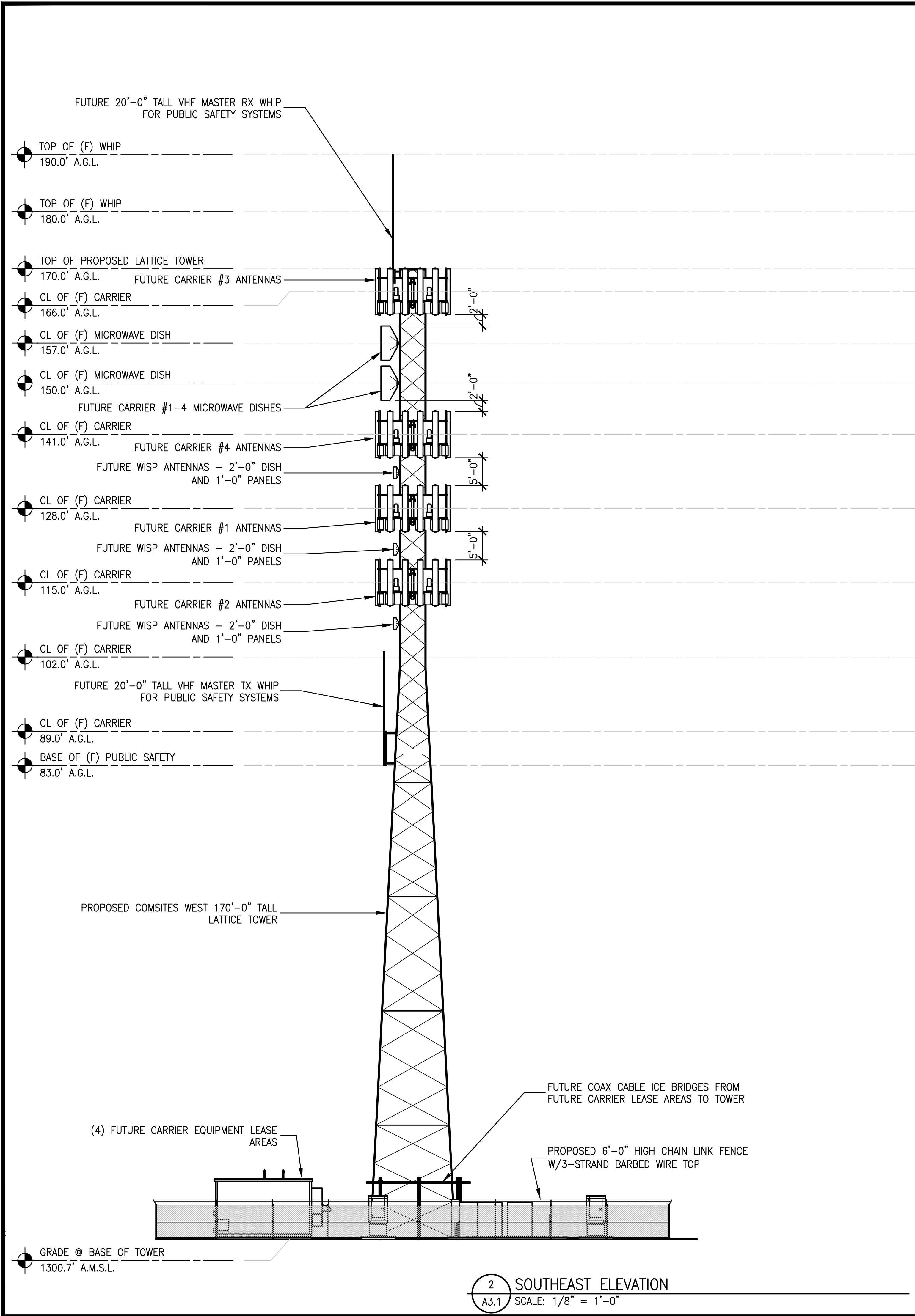


1 EQUIPMENT LAYOUT PLAN  
A2.1 SCALE: 1/8" = 1'-0"

Revisions:	
△ --	
△ --	
△ --	
△ --	
△ --	

File: 221.002_A21.dwg
Drawn By: MWS
Checked By: TST
Scale: AS NOTED
Date: 03/28/18





**MST ARCHITECTS**  
WEST DIVISION  
1520 River Park Drive, Sacramento, CA 95815  
Phone: 916.487.1100  
www.MSTArchitects.com

THIS DRAWING AND ANY INFORMATION CONTAINED HEREIN ARE THE PROPERTY OF MST ARCHITECTS, INC. NO PART OF THIS DRAWING OR ANY INFORMATION CONTAINED HEREIN SHALL BE REPRODUCED OR TRANSMITTED IN ANY FORM OR BY ANY MEANS, ELECTRONIC OR MECHANICAL, WITHOUT PERMISSION IN WRITING FROM MST ARCHITECTS, INC. ALL RIGHTS RESERVED.

**COMSITES WEST**  
CACHE CREEK  
20662 STATE HWY 20  
CLEARLAKE OAKS, CA

PROJECT ELEVATIONS

SHEET TITLE:

Not valid unless signed in ink by licensee.

Revisions:	
△ --	
△ --	
△ --	
△ --	
△ --	

File: 221.002\_A31.dwg  
Drawn By: MWS  
Checked By: TST  
Scale: AS NOTED  
Date: 03/28/18

Job No. 221.001

**A3.1**