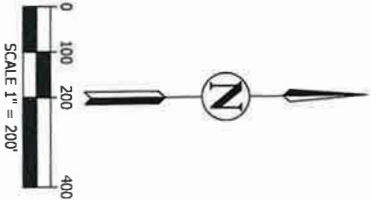


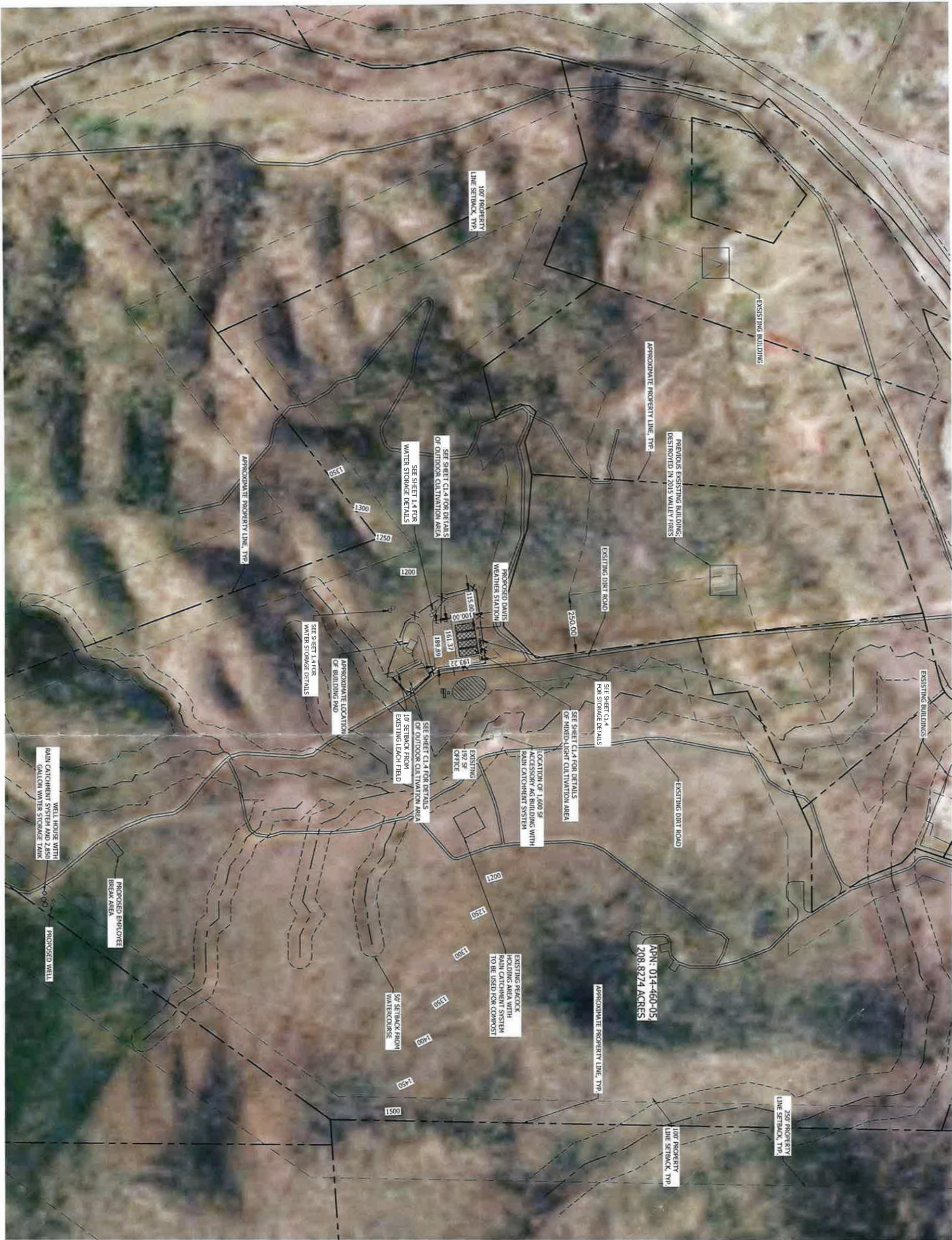


Attachment 5

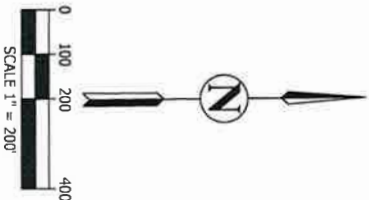
- NOTES:
- PROPERTY LINES AND TOPOGRAPHIC INFORMATION IS APPROXIMATE AND WAS OBTAINED FROM PUBLICLY AVAILABLE INFORMATION.
 - LOCATION MAP IS LOCATED ON SHEET C1.0
 - FOR ADJACENT PARCEL BOUNDARIES SEE SHEET C1.0



	COMMERCIAL CANNABIS SITE PLAN EXISTING CONDITIONS CHRISTOPHER KELLY 21650 ST HELENA CREEK ROAD MIDDLETOWN, CA 95461		BC ENGINEERING GROUP, INC. CIVIL ENGINEERING & LAND PLANNING www.bcengineeringgroup.com Phone: 707.542.4321 SANTA ROSA OFFICE: 2800 Cleveland Ave, Suite C, Santa Rosa CA 95403 UKIAH OFFICE: 603 S. State Street, Ukiah CA 95482				REV.	DESCRIPTION	BY	DATE



- NOTES:
- PROPERTY LINES AND TOPOGRAPHIC INFORMATION IS APPROXIMATE
 - AND WAS OBTAINED FROM PUBLICLY AVAILABLE INFORMATION.
 - LOCATION MAP IS LOCATED ON SHEET C10
 - FOR ADJACENT PARCEL BOUNDARIES SEE SHEET C10



Project #:

APN: 014-460-05

Scale:

AS SHOWN

Drawn:

WC

Date:

12-27-18

Job:

1193-18


REGISTERED PROFESSIONAL
CIVIL ENGINEER
C. KELLY
Exp. 12-28-18
STATE OF CALIFORNIA

SEAL

COMMERCIAL CANNABIS SITE PLAN

PROPOSED CONDITIONS

CHRISTOPHER KELLY
21650 ST HELENA CREEK ROAD
MIDDLETOWN, CA 95461



BC ENGINEERING GROUP, INC.

CIVIL ENGINEERING & LAND PLANNING

www.bceengineeringgroup.com
Phone: 707.542.4321
SANTA ROSA OFFICE:
2800 Cleveland Ave, Suite C, Santa Rosa CA 95403
UKIAH OFFICE:
603 S. State Street, Ukiah CA 95482

REV.	DESCRIPTION	BY	DATE

