

EXHIBIT "A"

SECTION 3.7(B)1. _____, OF ORDINANCE 1602

WE HEREBY CERTIFY THAT THE PLANNING COMMISSION OF LAKE COUNTY, CALIFORNIA, ADOPTED THIS MAP ON THE ___ DAY OF _____, ___

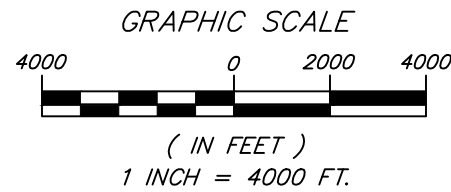
WE HEREBY CERTIFY THAT THIS MAP CONSTITUTES SECTION 3.7(B)1. _____, OF ORDINANCE 1602 OF LAKE COUNTY, CALIFORNIA AND THAT SECTION WAS ADOPTED BY ORDINANCE _____, PASSED ON THE ___ DAY OF _____, ___

CHAIR, PLANNING COMMISSION

CHAIR, BOARD OF SUPERVISORS

SECRETARY, PLANNING COMMISSION

CLERK TO THE BOARD OF SUPERVISORS



Zoning Map Guenoc Valley District

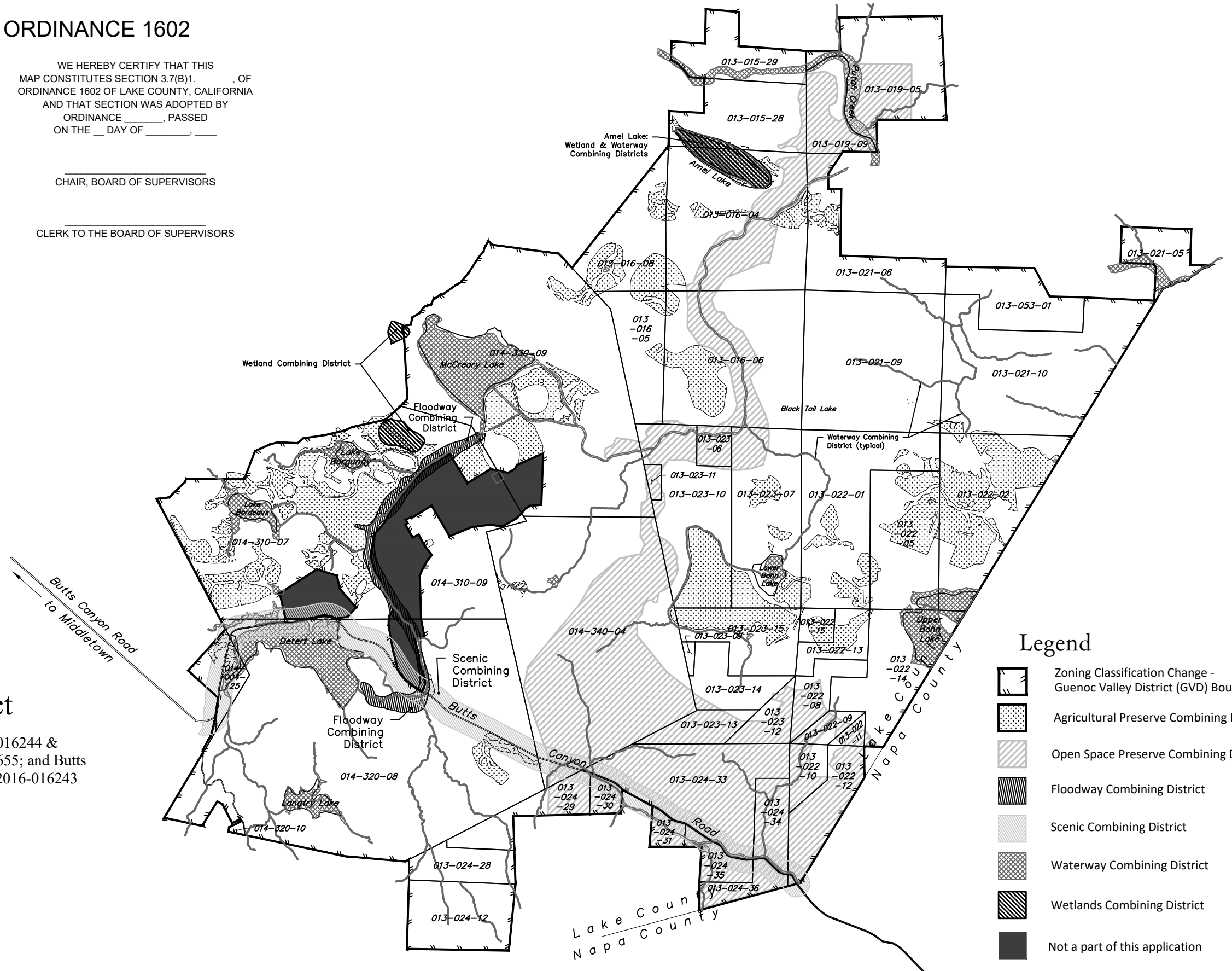
Of the lands of: Bohn Valley Inc, Doc. No. 2016-016244 & 2016-010660; Guenoc Valley Inc, Doc. No. 2016-010655; and Butts Creek Inc, Doc No. 2016-010654, 2016-010658, & 2016-016243
Lake County Records

COUNTY OF LAKE,
STATE OF CALIFORNIA

BY ALBION SURVEYS
ST. HELENA, CALIFORNIA



JUNE 2, 2020



Legend

- Zoning Classification Change - Guenoc Valley District (GVD) Boundary
- Agricultural Preserve Combining District
- Open Space Preserve Combining District
- Floodway Combining District
- Scenic Combining District
- Waterway Combining District
- Wetlands Combining District
- Not a part of this application

EXHIBIT "A"

SECTION 3.7(B)1. _____, OF ORDINANCE 1602

WE HEREBY CERTIFY THAT THE PLANNING COMMISSION OF LAKE COUNTY, CALIFORNIA, ADOPTED THIS MAP ON THE ___ DAY OF _____, ___

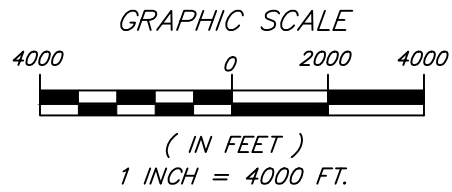
WE HEREBY CERTIFY THAT THIS MAP CONSTITUTES SECTION 3.7(B)1. _____, OF ORDINANCE 1602 OF LAKE COUNTY, CALIFORNIA AND THAT SECTION WAS ADOPTED BY ORDINANCE _____, PASSED ON THE ___ DAY OF _____, ___

CHAIR, PLANNING COMMISSION

CHAIR, BOARD OF SUPERVISORS

SECRETARY, PLANNING COMMISSION

CLERK TO THE BOARD OF SUPERVISORS



General Plan Amendment Guenoc Valley District

Of the lands of: Bohn Valley Inc, Doc. No. 2016-016244 & 2016-010660; Guenoc Valley Inc, Doc. No. 2016-010655; and Butts Creek Inc, Doc No. 2016-010654, 2016-010658, & 2016-016243

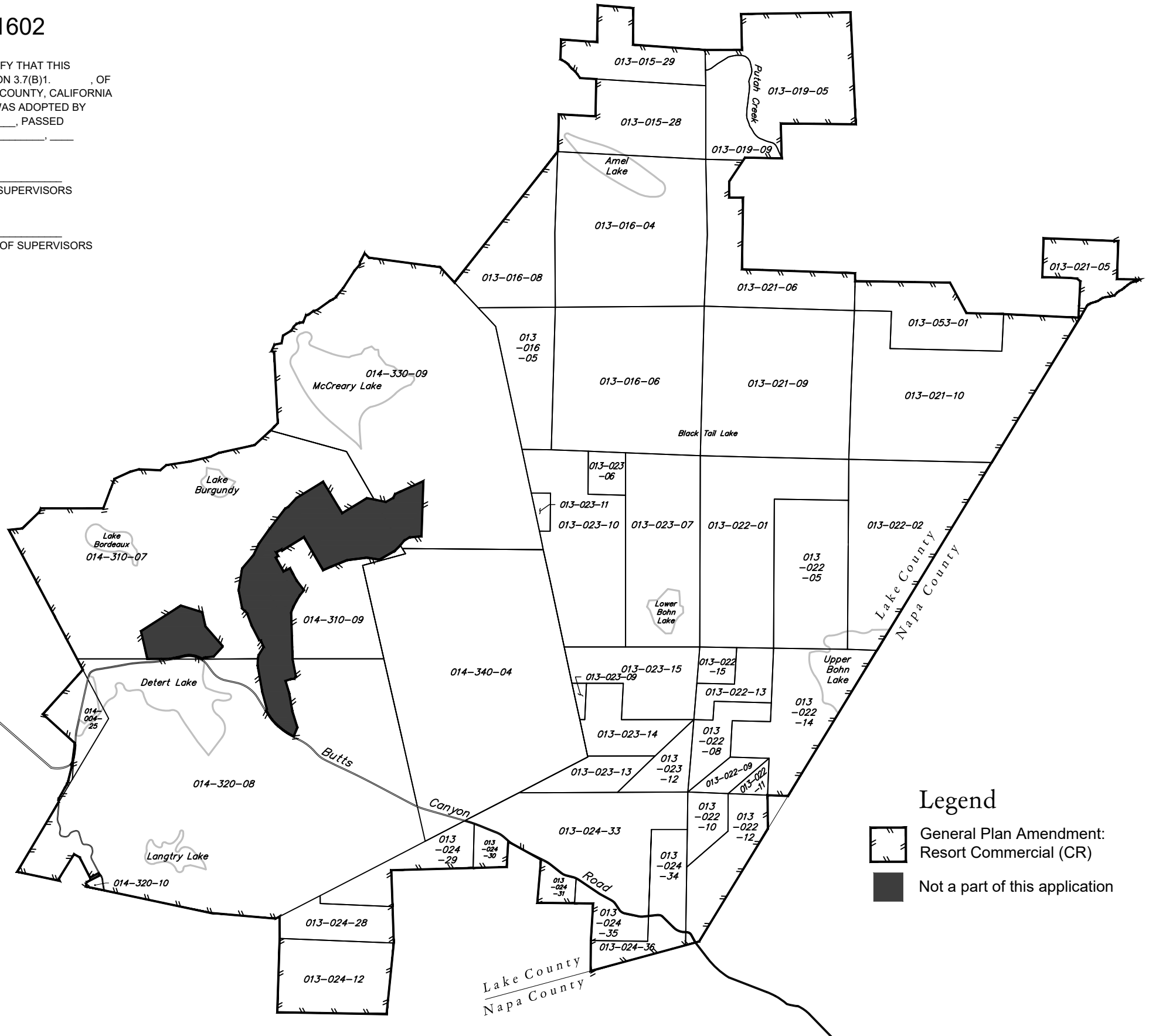
Lake County Records

COUNTY OF LAKE,
STATE OF CALIFORNIA

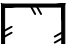
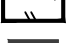
By
ALBION SURVEYS
ST. HELENA, CALIFORNIA



NOVEMBER 26, 2019



Legend

-  General Plan Amendment: Resort Commercial (CR)
-  Not a part of this application