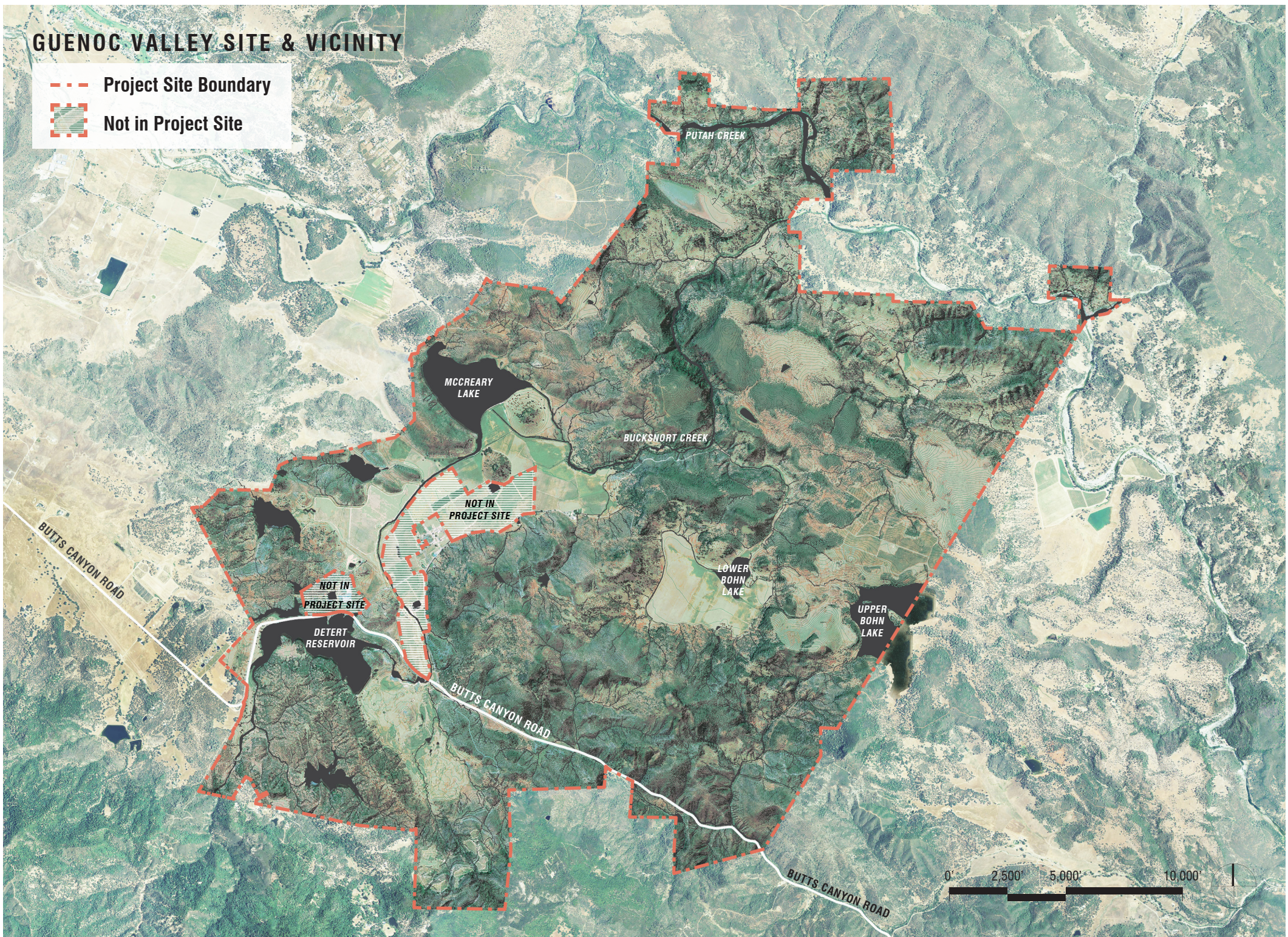


GUENOC VALLEY SITE & VICINITY

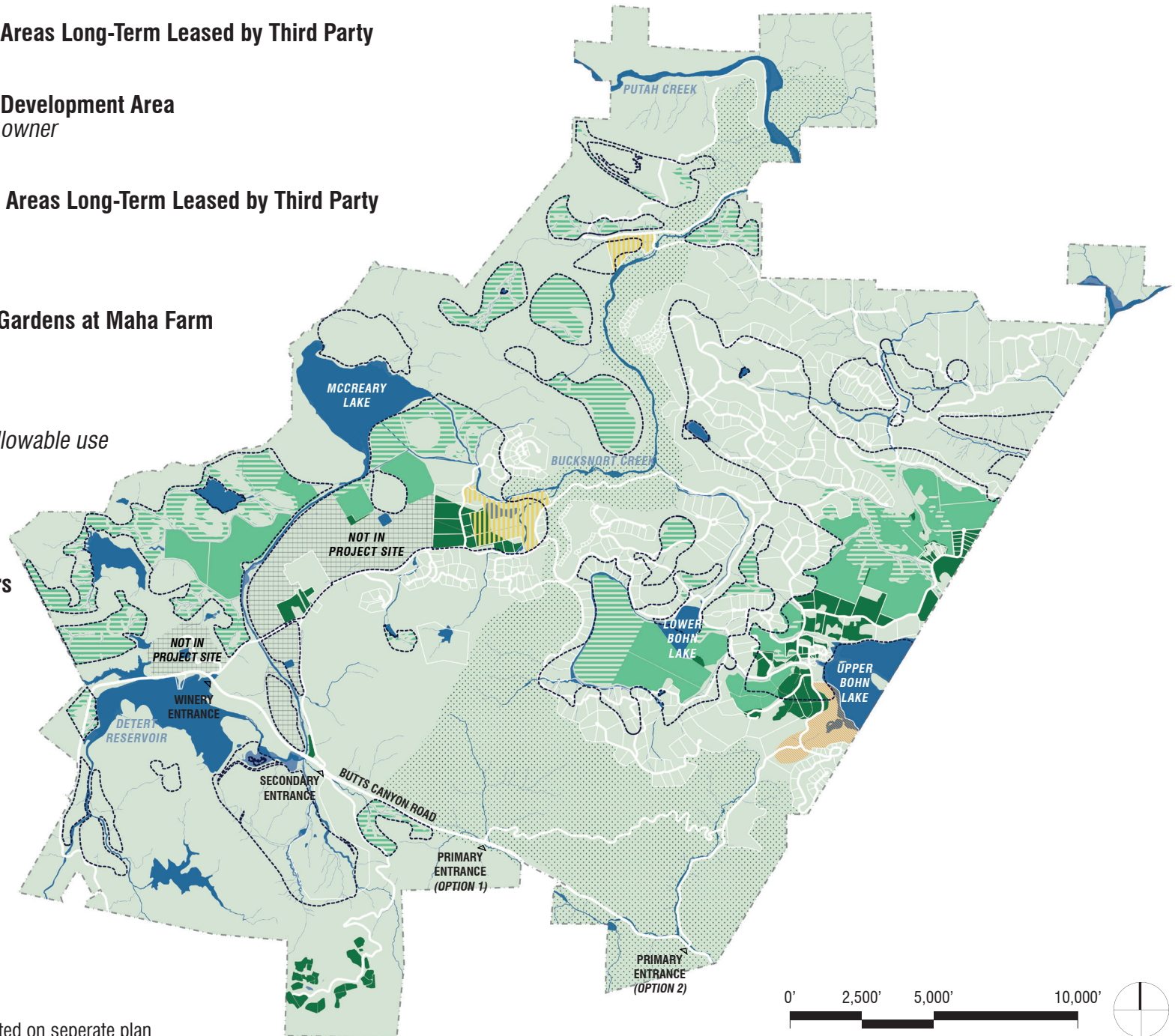
 Project Site Boundary

 Not in Project Site



AGRICULTURAL DEVELOPMENT within the GUENOC VALLEY DISTRICT

- Currently Planted Vineyards in Areas Long-Term Leased by Third Party**
660 Acres
- Currently Planted Vineyards in Development Area**
To remain at discretion of future owner
330 Acres
- Potential Vineyard Locations in Areas Long-Term Leased by Third Party**
970 Acres
- Equestrian Pastures**
- Diversified Agriculture Market Gardens at Maha Farm**
- Designated Open Space**
- Project Area**
Agriculture continued to be an allowable use
- Place of Use Areas**
Previously approved for agriculture irrigation
- Agriculture Irrigation Reservoirs**

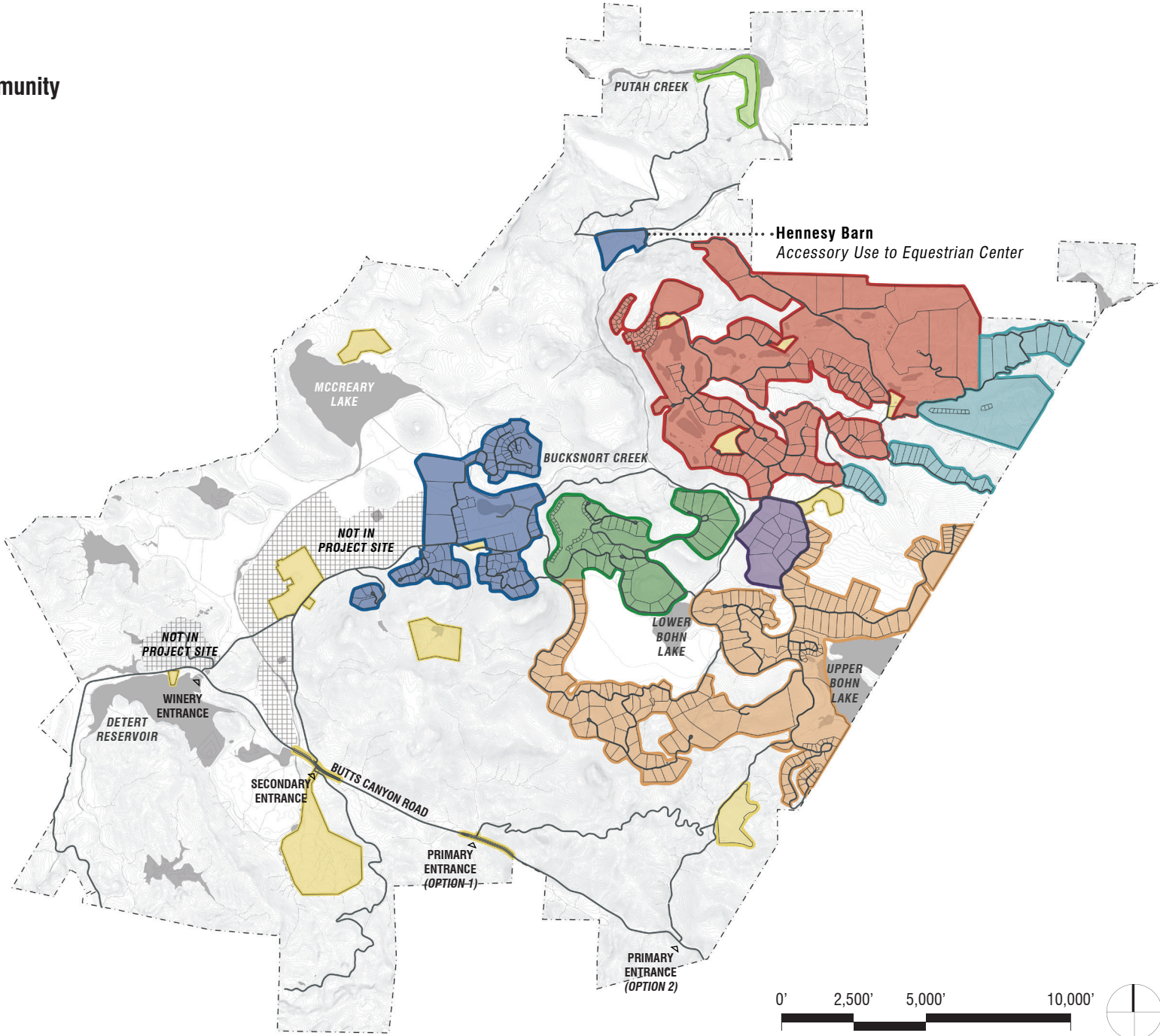


NOTE: Agricultural grazing activities represented on separate plan



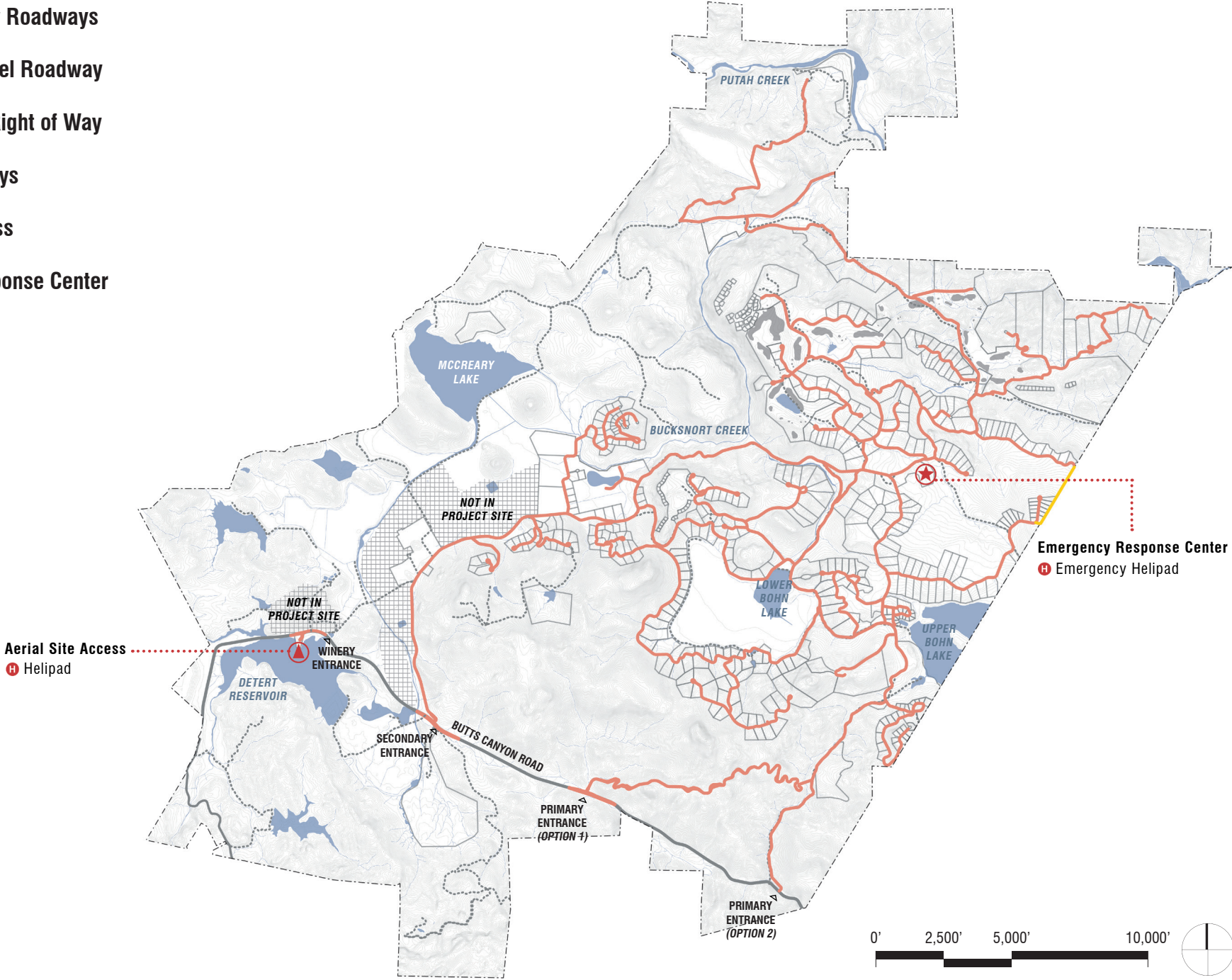
RESORT COMMUNITIES/PLANNING AREAS

- Bohn Ridge Resort Community
- Equestrian Center & Lodge Community
- Maha Farm Community
- Red Hill Resort Community
- Resort at Trout Flat Community
- Spa & Wellness Community
- Tent Camp Area
- Guenoc Valley District
Accessory Use Planning Areas*



CIRCULATION PLAN ROADWAYS & AERIAL ACCESS

- Improved & New Roadways
- Maintained Gravel Roadway
- Existing Public Right of Way
- - - Existing Roadways
- ▲ Aerial Site Access
- ★ Emergency Response Center
- H Helipads



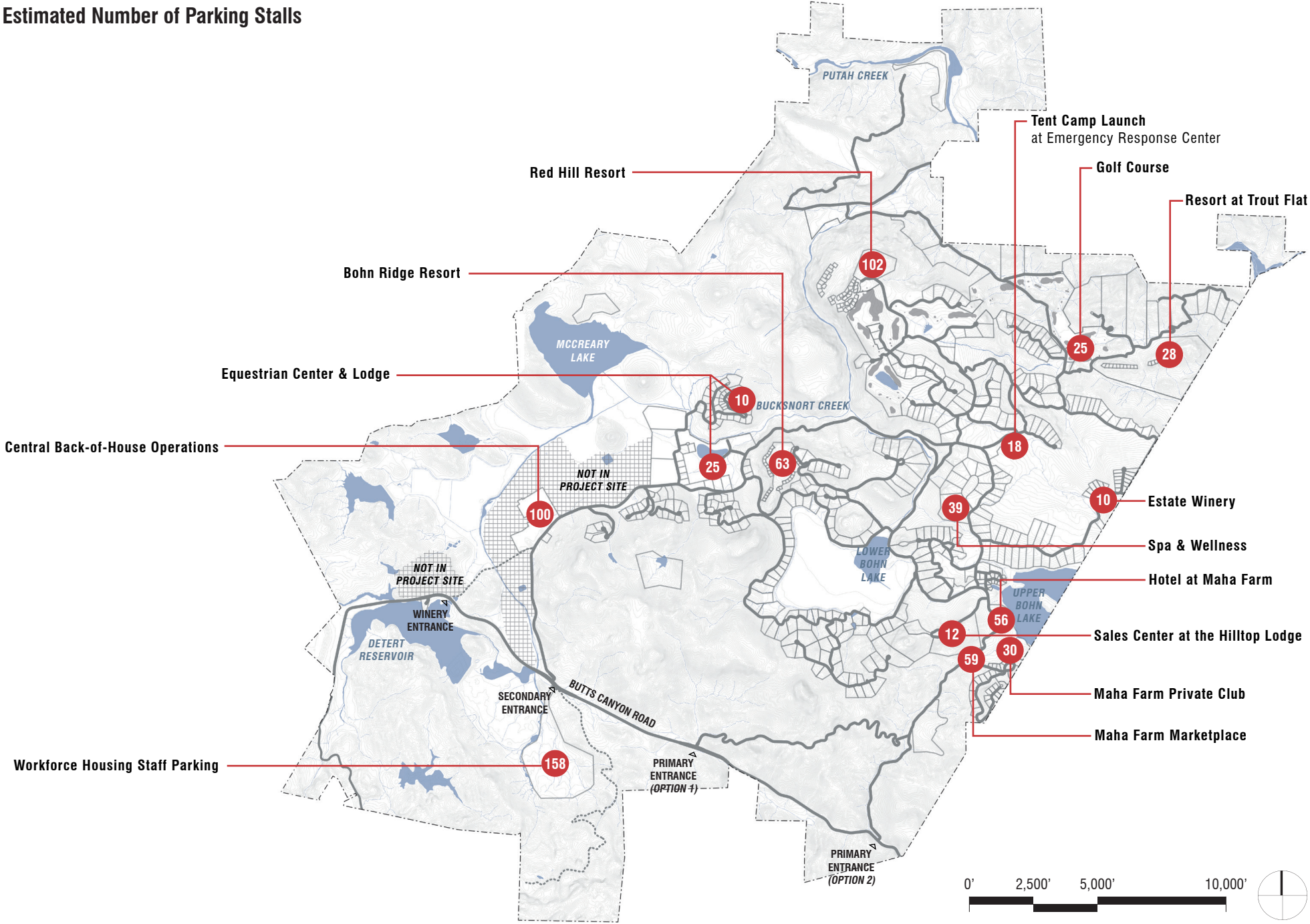
Aerial Site Access
H Helipad

Emergency Response Center
H Emergency Helipad



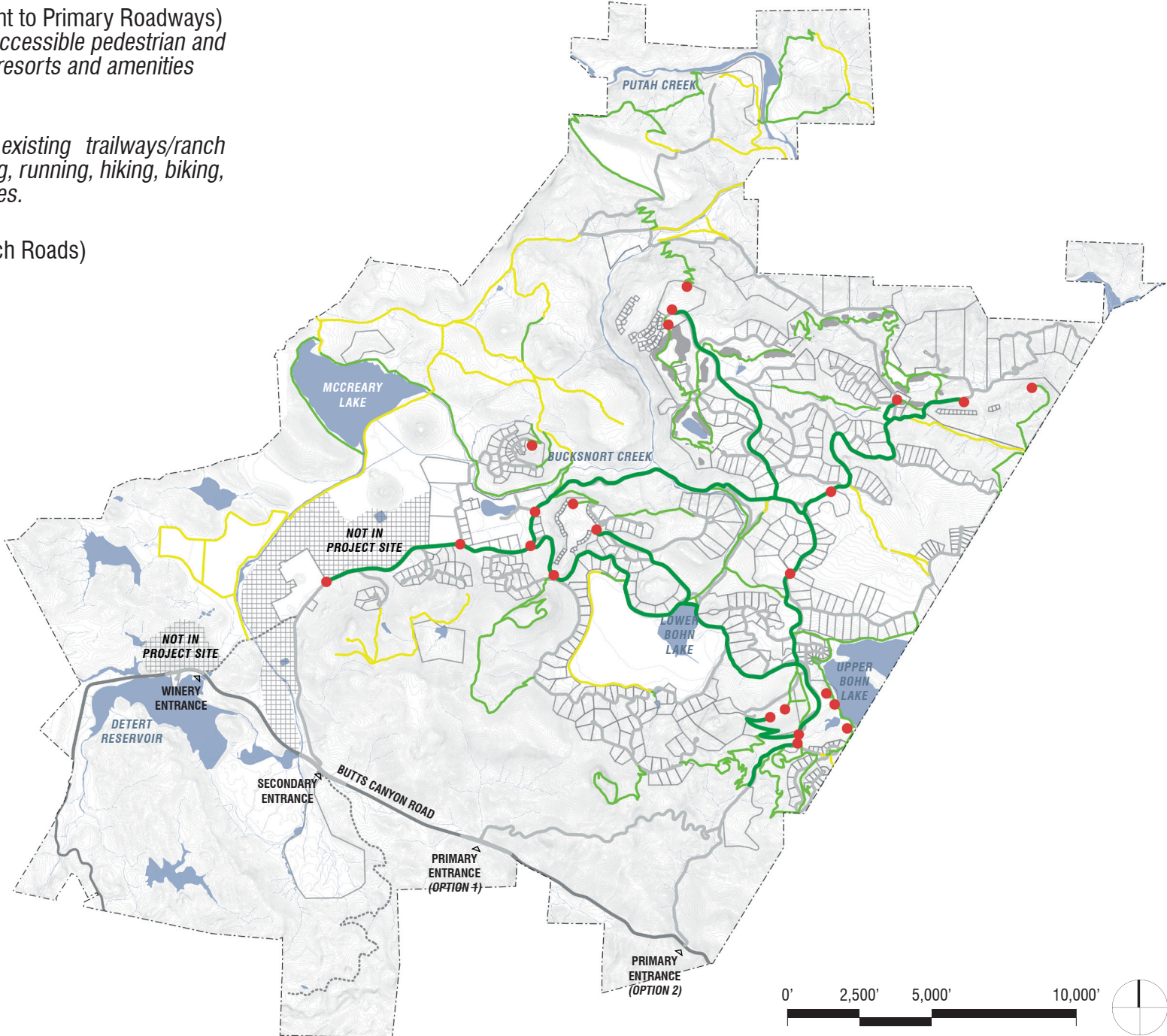
CIRCULATION PLAN PARKING

Estimated Number of Parking Stalls



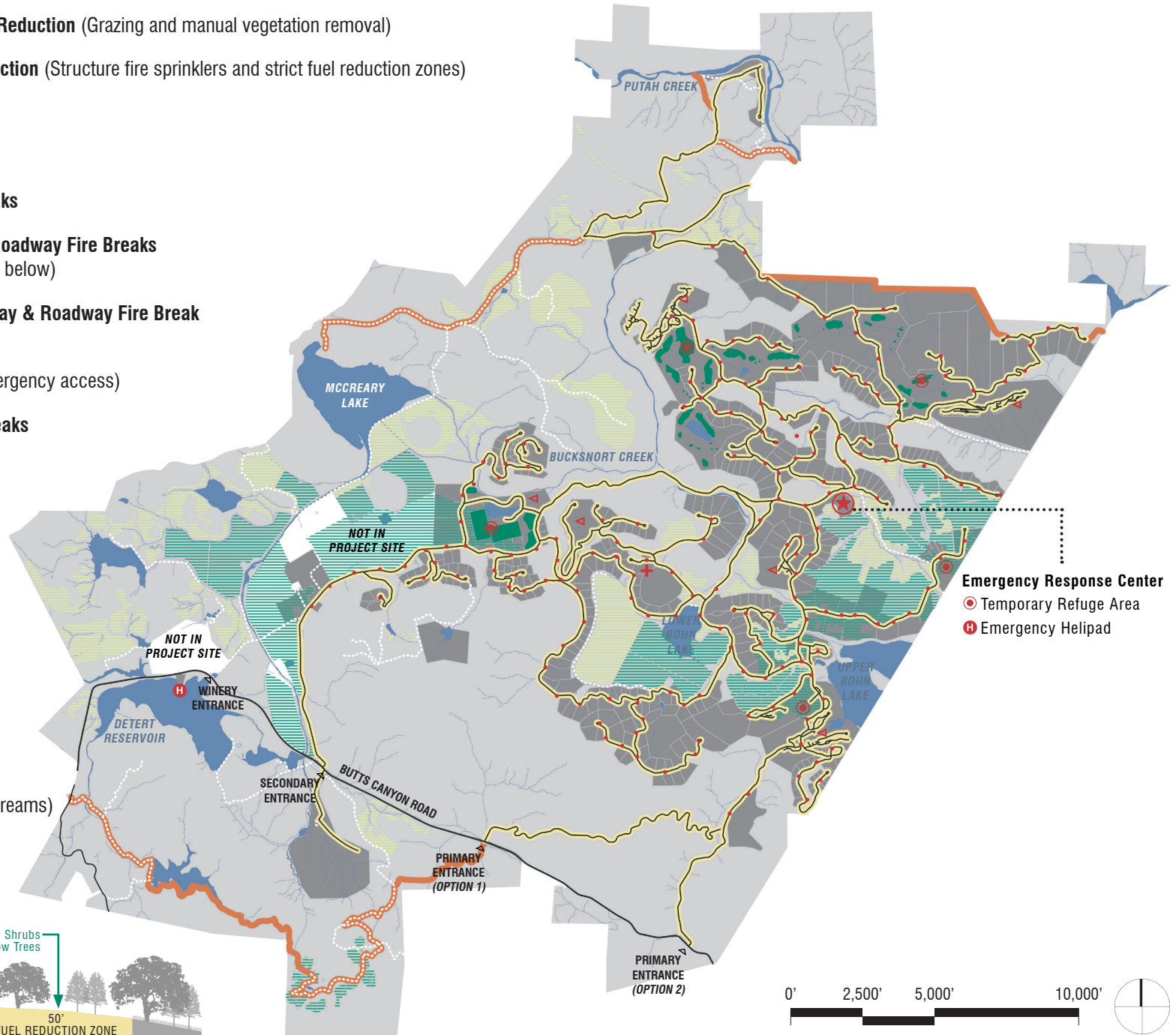
CIRCULATION PLAN CONCEPTUAL RESORT PATHWAYS

- Primary New Pathways** (Adjacent to Primary Roadways)
Provides convenient and easily accessible pedestrian and bicycling routes to access main resorts and amenities
- Secondary New Trailways**
Reutilizes and expands upon existing trailways/ranch roads to offer recreational walking, running, hiking, biking, and horseback riding opportunities.
- Existing Trailways** (Current Ranch Roads)
- Connection to Resort Pathways**



WILDFIRE PREVENTION PLAN

- Active Landscape Management Fuel Reduction** (Grazing and manual vegetation removal)
- Residential/Resort/Facility Fuel Reduction** (Structure fire sprinklers and strict fuel reduction zones)
- Irrigated Recreational Fire Breaks**
- Irrigated Vineyard Fire Breaks**
- Potential Irrigated Vineyard Fire Breaks**
- Primary Two-Way Access Routes & Roadway Fire Breaks**
(See typical roadway fire break section below)
- Secondary Maintained Gravel Roadway & Roadway Fire Break**
- Existing Ranch Roads**
(Used for active fuel reduction and emergency access)
- Voluntary Property Boundary Fire Breaks**
- ★ **Emergency Response Center**
- + **Early Fire Detection System**
(High Definition Camera)
- ▲ **Emergency Notification Siren System**
(Exact locations TBD)
- ⊙ **Designated Meeting & Staging Areas**
- H **Helipads**
- Fire Hydrants**
- Water Sources**
(Reservoirs, lakes, ponds, creeks, & streams)



- ★ **Emergency Response Center**
- ⊙ **Temporary Refuge Area**
- H **Emergency Helipad**

TYPICAL ROADWAY FIRE BREAK

