

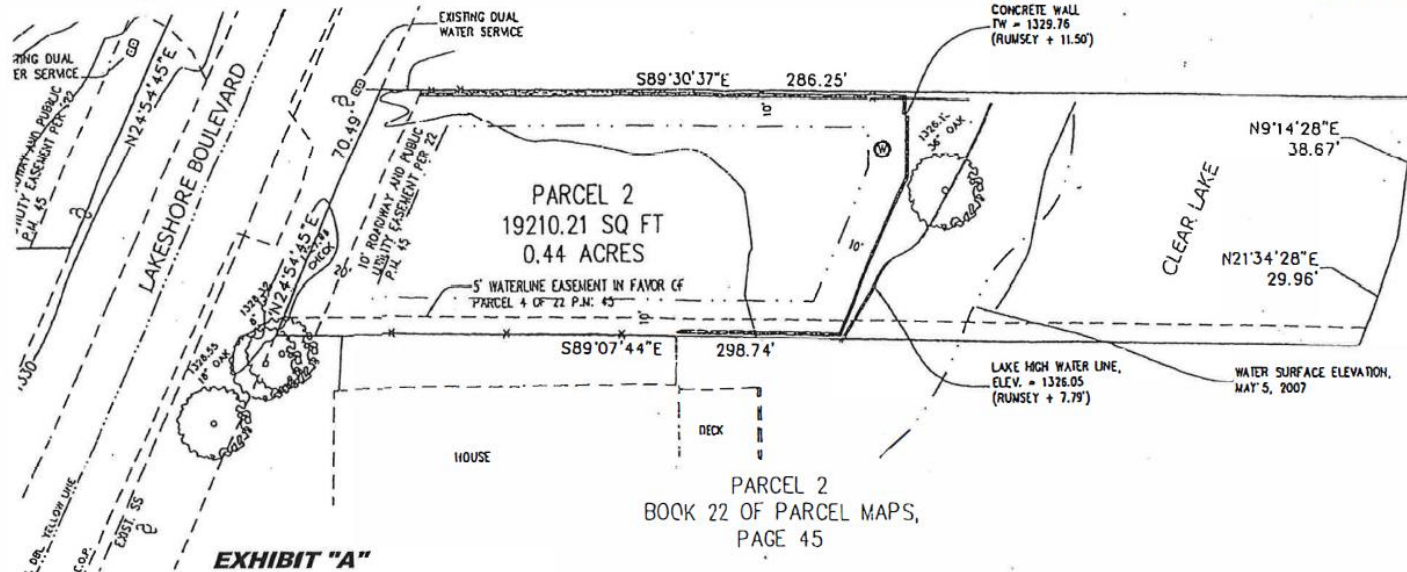
ZONING MAP of

PARCEL 2
41-PM-20-22, INCLUSIVE

RECEIVED

JUL 10 2019

LAKE COUNTY COMMUNITY
DEVELOPMENT DEPT.



WE HEREBY CERTIFY THAT THE
PLANNING COMMISSION OF LAKE COUNTY,
CALIFORNIA, ADOPTED THIS MAP ON THE
____ DAY OF _____, 20____.

CHAIR, PLANNING COMMISSION

SECRETARY, PLANNING COMMISSION

WE HEREBY CERTIFY THAT THIS MAP
CONSTITUTES SECTION 3.7(b)1. OF
ORDINANCE 1602 OF LAKE COUNTY,
CALIFORNIA, AND THAT SECTION WAS
ADOPTED BY ORDINANCE _____, PASSED
ON THE _____ DAY OF _____, 20____.

CHAIR, BOARD OF SUPERVISORS

CLERK OF THE BOARD OF SUPERVISORS

PARCEL 2

CURRENT ZONING: R-3

PROPOSED CHANGE TO: R-1

CURRENT GENERAL PLAN: HCR-RC

PROPOSED GENERAL PLAN: LDR-RC

Attachment 2